



Park Mount Lodge 12-14 Reeves Mews,
Mayfair, W1K

£1,670 Per Week,

NAPIER WATT

T: 0207 935 0011
E: enquiries@napierwatt.co.uk
W: napierwatt.co.uk

35 Berkeley Square, Mayfair, London, W1J 5BF







Description

Charming two bedroom set on the fourth floor (with lift) of this secure development in the heart of Mayfair. This well-presented property is in great condition and boast air-conditioning and three balconies. Offering approximately 990sq ft of lateral space, this unit comprises a spacious living room with space for dining and a balcony, modern fitted kitchen and two en-suite bedrooms, both with their own private balconies. The building is moments from the Grosvenor Hotel and benefits from a lift and on-site caretaker. Available, furnished.

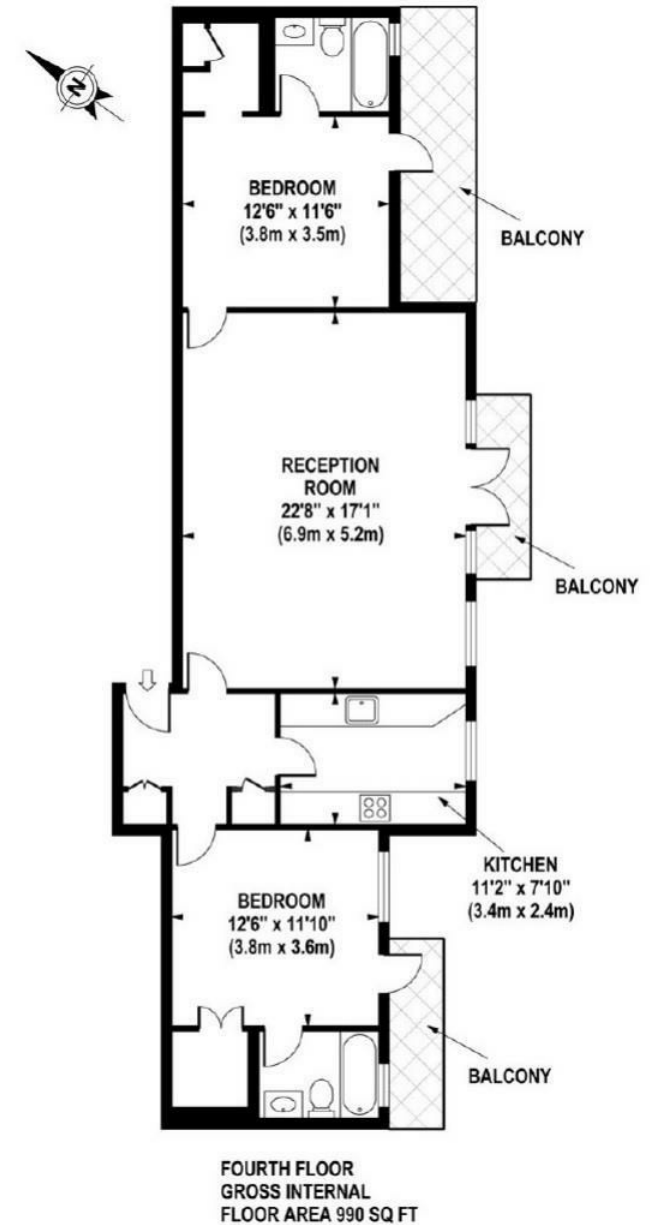
2 Bedrooms : 2 En-Suites : Air-Conditioning : 3 Balconies : Lift : On-Site Caretaker : Westminster Council Tax Band H

Key Features

- TWO EN-SUITE BEDROOMS
- AIR-CONDITIONING
- LIFT
- ON-SITE CARETAKER
- THREE BALCONIES
- WELL-PRESENTED

Terms

Fees & Charges: Tenancies exceeding £100,000 Per annum £480 inc VAT, Tenancies where a company is a tenant £480 Inc VAT.



IMPORTANT: We would inform prospective purchasers that these sales particulars have been prepared as a general guide only. A detailed survey has not been carried out, nor the services, appliances and fittings tested. Room sizes should not be relied upon for furnishing purposes and are approximate. If floor plans are included, they are for guidance only and illustration purposes only and may not be to scale. If there are any important matters likely to affect your decision to buy, please contact us before viewing the property.