



22, Kensington Gardens Square,  
Hyde Park Estate, W2

£8,500 Per Month,

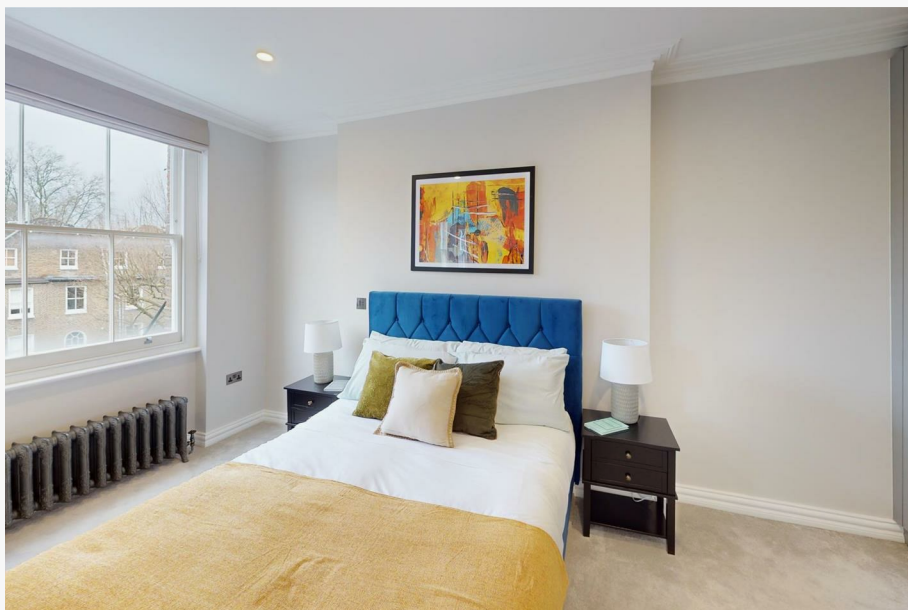
NAPIER WATT

T: 0207 935 0011  
E: [enquiries@napierwatt.co.uk](mailto:enquiries@napierwatt.co.uk)  
W: [napierwatt.co.uk](http://napierwatt.co.uk)

35 Berkeley Square, Mayfair, London, W1J 5BF







## Description

A delightful period building offering a three-bedroom apartment in this charming garden square. Arranged over the 2nd, 3rd and 4th floors, the property comprises a spacious living room, fully equipped kitchen, two en-suite bedrooms, a single bedroom/study, utility room, guest cloakroom and good storage. Kensington Gardens Square is conveniently positioned just south of Westbourne Grove within easy walking distance of the diverse amenities of Notting Hill Gate and Queensway. The green spaces of Hyde Park are also close by. Available, furnished.

3 Bedrooms : 2 Bathrooms : Guest WC : Triplex : EPC Rating D : Westminster Council Tax Band G

## Key Features

- THREE BEDROOMS
- NEAR HYDER PARK
- ELEGENTLY PRESENTED
- TWO BATHROOM
- RECENTLY RUFURBISHED

## Terms

Fees & Charges: Tenancies exceeding £100,000 Per annum £480 inc VAT, Tenancies where a company is a tenant £480 Inc VAT.

## Kensington Gardens Square, W2

Approx. Gross Internal Area 1462 Sq Ft - 135.82 Sq M



IMPORTANT: We would inform prospective purchasers that these sales particulars have been prepared as a general guide only. A detailed survey has not been carried out, nor the services, appliances and fittings tested. Room sizes should not be relied upon for furnishing purposes and are approximate. If floor plans are included, they are for guidance only and illustration purposes only and may not be to scale. If there are any important matters likely to affect your decision to buy, please contact us before viewing the property.