



6 Montrose Place,  
Belgravia, SW1X

Asking Price £4,500,000, Leasehold

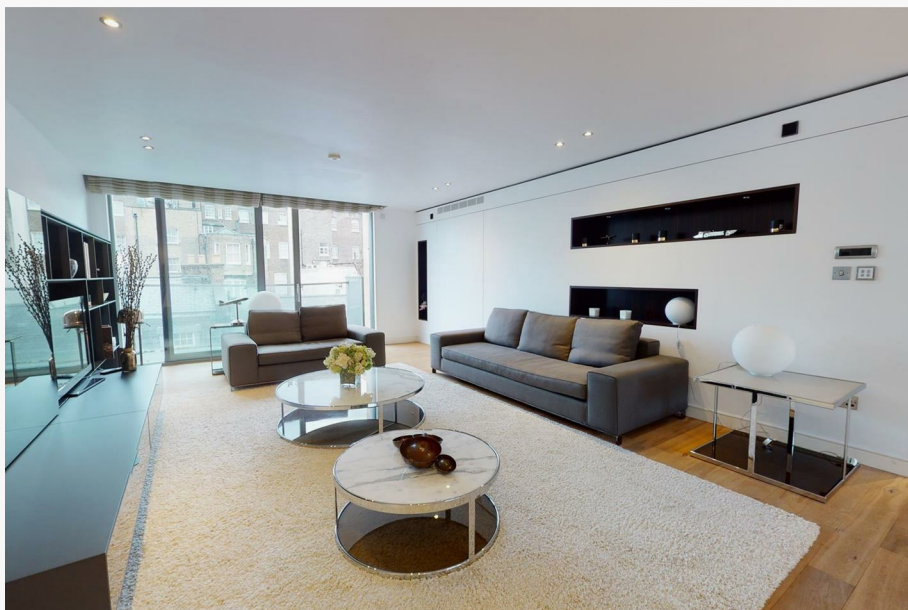
NAPIER WATT

T: 0207 935 0011  
E: [enquiries@napierwatt.co.uk](mailto:enquiries@napierwatt.co.uk)  
W: [napierwatt.co.uk](http://napierwatt.co.uk)

35 Berkeley Square, Mayfair, London, W1J 5BF







## Description

A beautifully presented three bedroom, three bathroom, lateral apartment situated on the third floor of this prestigious modern block with 24 hour porterage and parking.

Internally, the property offers 2,140sqft/ 198sqm of accommodation arranged with three bedrooms with three ensuite bathrooms, balcony, secure off street parking space.

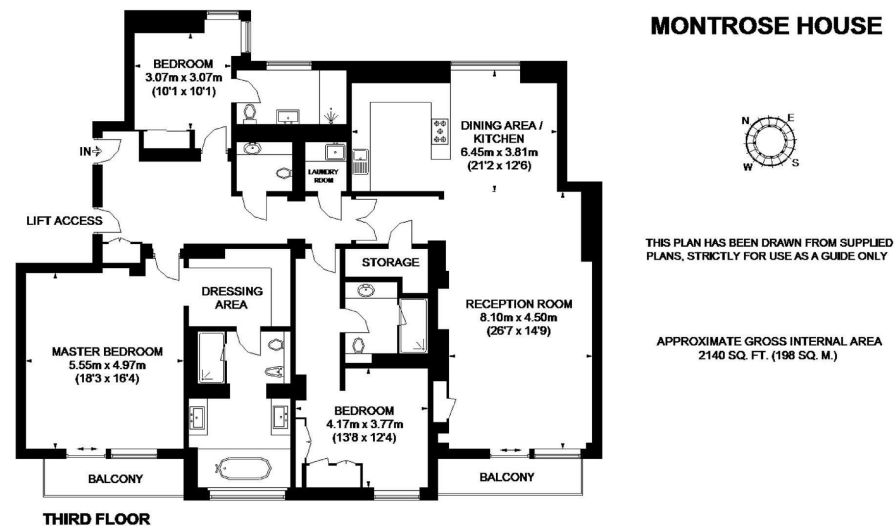
The building offers, AC, direct lift access, 24 hour security and porterage. Montrose Place lies just to the east of Belgrave Square and connects Chapel Street with Halkin Street.

## Key Features

- 24 HOUR CONCIERGE
- AIR CONDITIONING
- 2X BALCONIES
- GOOD CONDITION
- DIRECT LIFT ACCESS
- SECURE UNDERGROUND PARKING
- QUIET STREET
- LUXURIOUS HOME

## Terms

Leasehold, expires 01/07/3007 987 years



IMPORTANT: We would inform prospective purchasers that these sales particulars have been prepared as a general guide only. A detailed survey has not been carried out, nor the services, appliances and fittings tested. Room sizes should not be relied upon for furnishing purposes and are approximate. If floor plans are included, they are for guidance only and illustration purposes only and may not be to scale. If there are any important matters likely to affect your decision to buy, please contact us before viewing the property.