



Richbourne Court 9 Harrowby Street,
Marylebone, W1H

£1,650 Per Week,

NAPIER WATT

T: 0207 935 0011

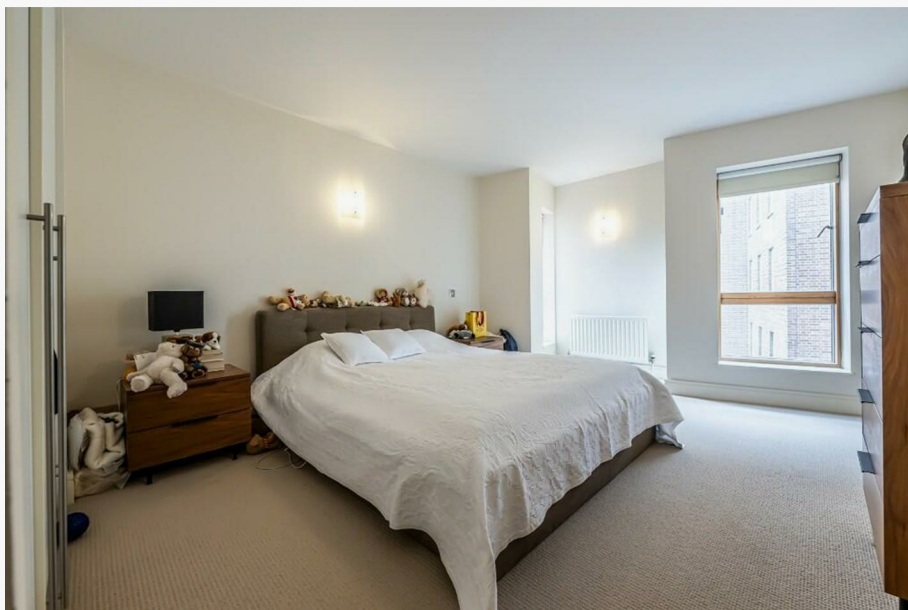
E: enquiries@napierwatt.co.uk

W: napierwatt.co.uk

35 Berkeley Square, Mayfair, London, W1J 5BF







Description

Spacious three-bedroom apartment located in a smart modern building with porterage and underground parking. The property benefits from three double bedrooms, two bathrooms, exceptionally large double aspect reception room, with lovely balcony and a fitted kitchen breakfast room. Ideally located between Marble Arch underground and Marylebone Overground Station as well as Hyde Park. The building benefits from a 24-hour porter and an underground car park. Available, unfurnished.

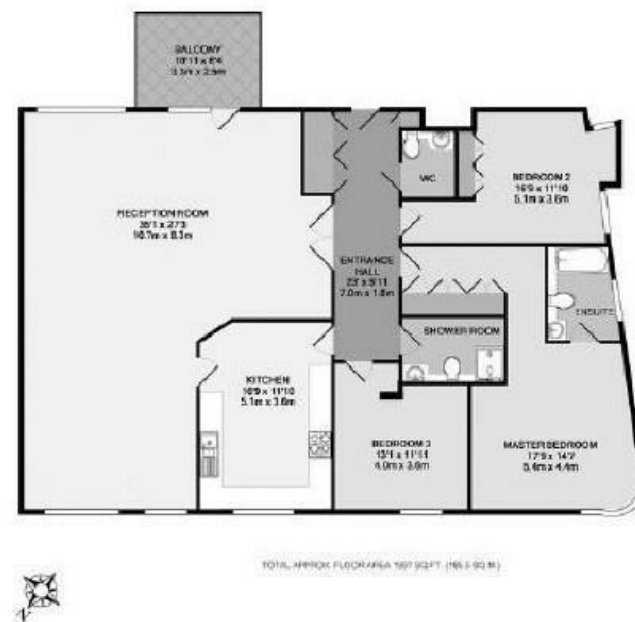
3 Bedrooms : 2 Bathrooms : Balconies : Underground Parking : 24-Hour Porter : EPC rating B : Westminster Council Tax Band H

Key Features

- 24 HOUR PORTER
- BALCONY
- COMMUNAL GARDEN
- PASSENGER LIFT
- SECURE PARKING
- GOOD CONDITION

Terms

Fees & Charges: Tenancies exceeding £100,000 Per annum £480 inc VAT, Tenancies where a company is a tenant £480 Inc VAT.



IMPORTANT: We would inform prospective purchasers that these sales particulars have been prepared as a general guide only. A detailed survey has not been carried out, nor the services, appliances and fittings tested. Room sizes should not be relied upon for furnishing purposes and are approximate. If floor plans are included, they are for guidance only and illustration purposes only and may not be to scale. If there are any important matters likely to affect your decision to buy, please contact us before viewing the property.