



Fursecroft George Street,
Marylebone, W1H

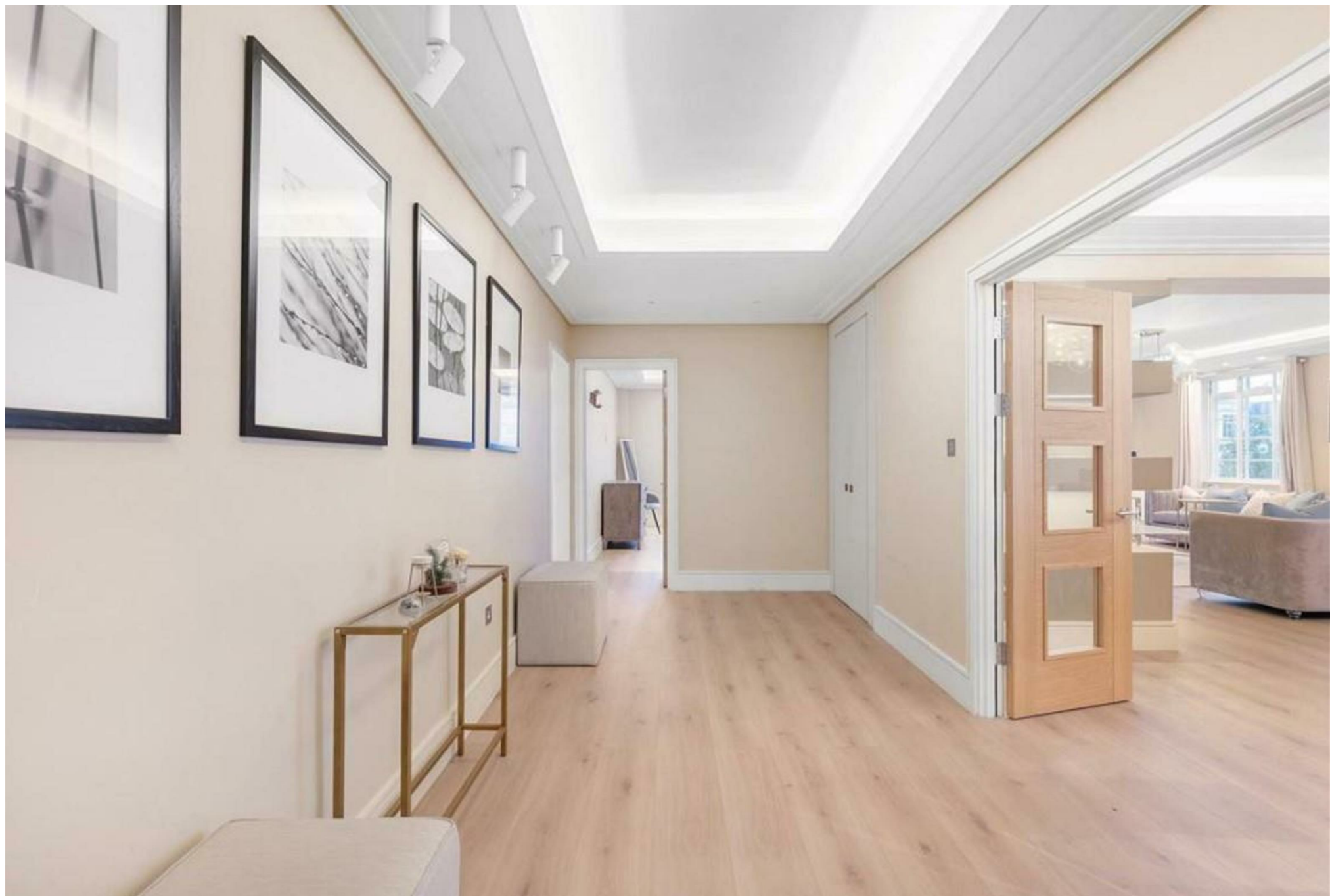
Asking Price £3,250,000, Leasehold

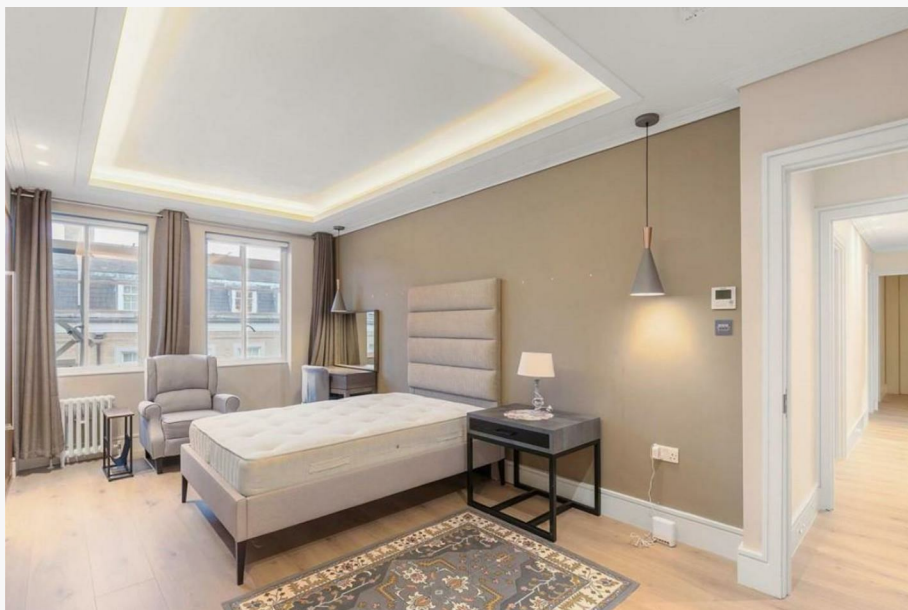
NAPIER WATT

T: 0207 935 0011
E: enquiries@napierwatt.co.uk
W: napierwatt.co.uk

35 Berkeley Square, Mayfair, London, W1J 5BF







Description

A newly decorated and partially refurbished 4-6 bedroom lateral apartment of 2,205 sqft/204.9 sq.m set on the 6th floor of this 24-hour portered block.

Internally, the property comprises a large entrance hall, two bright interconnecting reception rooms, fitted kitchen, six bedrooms, three bathrooms, laundry room & balcony.

Benefits include, lifts, porter, cctv, and AC to all principle rooms.

Fursecroft has newly refurbished communal areas and is situated on Brown Street, the property is superbly located for local amenities and transport links of Edgware Road, Baker Street, Marylebone and Hyde Park.

EPC D

Key Features

- AIR CONDITIONING
- 24 HOUR PORTER
- NEWLY DECORATED
- CCTV
- LIFTS
- 6TH FLOOR
- NEW COMMUNAL AREAS

Terms

Tenure: Leasehold – Expires 22/03/2123

Service Charge: £16,600.00 Per Annum

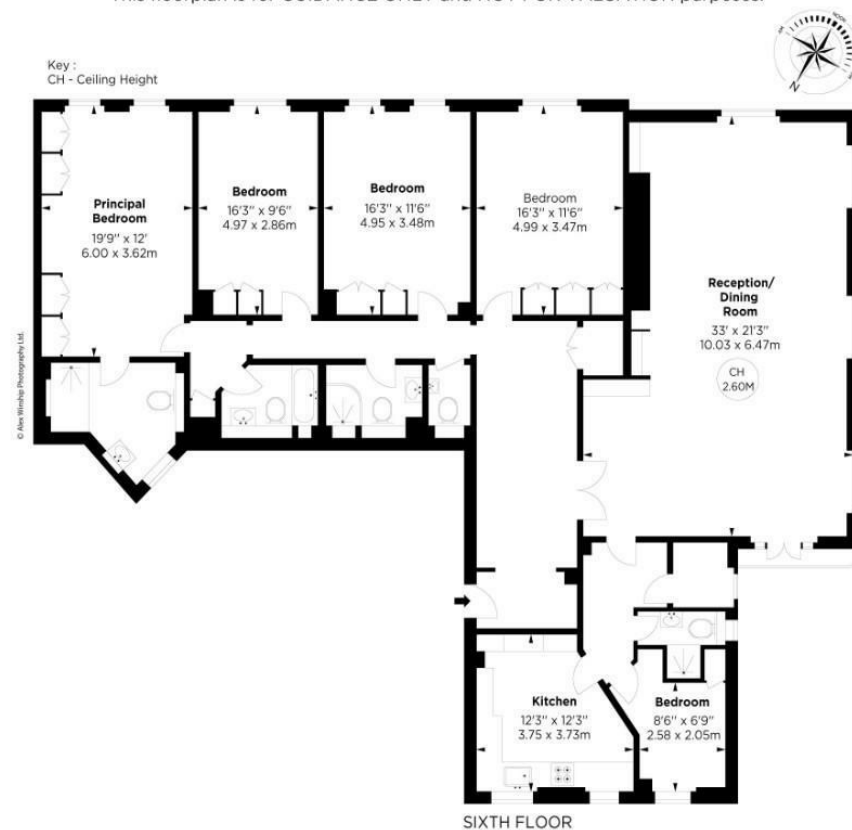
EPC D

Council Tax : Westminster Band G

Fursecroft, George Street, W1

APPROX. GROSS INTERNAL AREA *
2250 Sq Ft - 209.03 Sq M

This floorplan is for GUIDANCE ONLY and NOT FOR VALUATION purposes.



IMPORTANT: We would inform prospective purchasers that these sales particulars have been prepared as a general guide only. A detailed survey has not been carried out, nor the services, appliances and fittings tested. Room sizes should not be relied upon for furnishing purposes and are approximate. If floor plans are included, they are for guidance only and illustration purposes only and may not be to scale. If there are any important matters likely to affect your decision to buy, please contact us before viewing the property.