



FURSECROFT, GEORGE STREET
LONDON, W1H

Asking Price £3,250,000 Leasehold

Description

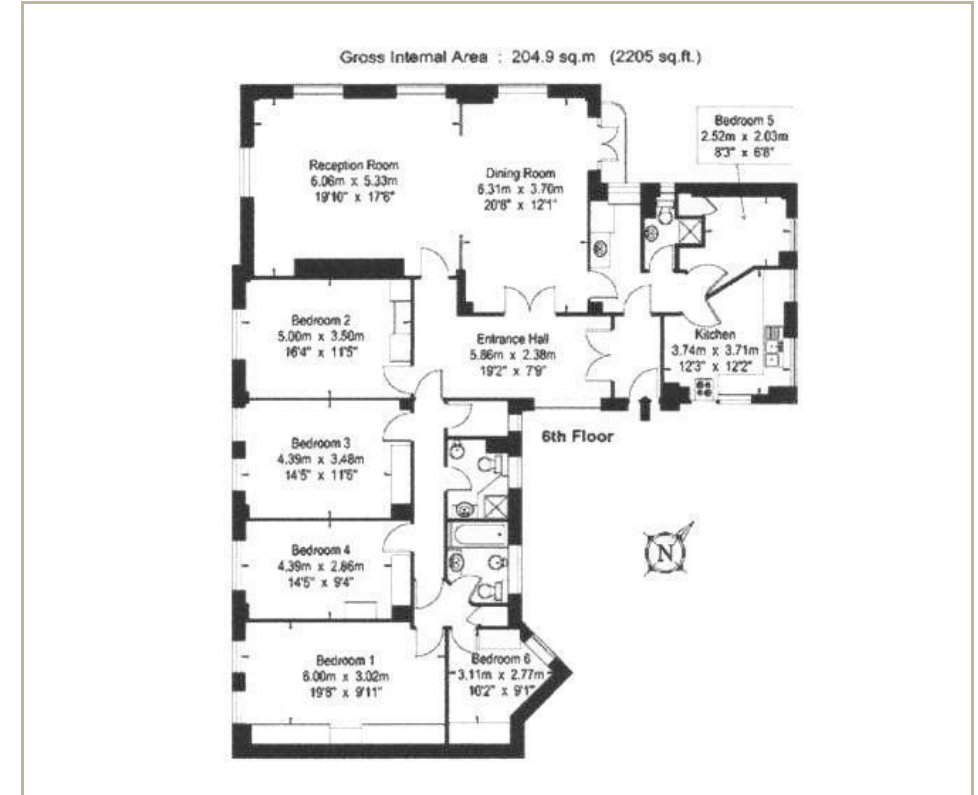
A newly decorated and partially refurbished 4-6 bedroom lateral apartment of 2,205 sqft/204.9 sq.m set on the 6th floor of this 24-hour portered block.

Internally, the property comprises a large entrance hall, two bright interconnecting reception rooms, fitted kitchen, six bedrooms, three bathrooms, laundry room & balcony.

Benefits include, lifts, porter, cctv, and AC to all principle rooms.

Fursecroft has newly refurbished communal areas and is situated on Brown Street, the property is superbly located for local amenities and transport links of Edgware Road, Baker Street, Marylebone and Hyde Park.

EPC D



TERMS

Tenure: Leasehold – Expires 22/03/2123

Service Charge: £16,600.00 Per Annum

EPC D

Council Tax : Westminster Band G