



Richbourne Court Harrowby Street,
Marylebone, W1H

£1,200 Per Week,

NAPIER WATT

T: 0207 935 0011
E: enquiries@napierwatt.co.uk
W: napierwatt.co.uk

35 Berkeley Square, Mayfair, London, W1J 5BF







Description

Lateral three-bedroom apartment in this portered block in Marylebone. Set on the fifth floor (with lift) of this modern development, the property of approximately comprises a living room that leads out to balcony, an open-plan dining room / kitchen, master en-suite, second bedroom with two further bedrooms and family bathroom. Ideally located for the shops, restaurants and transport facilities of the West End, Richbourne Court benefits from a large communal entrance hall, 24-hour porter, lifts, communal gardens and video entry system.

Available, furnished.

Entrance Hall : Reception Room : Kitchen / Dining Room : 3 Bedrooms : 3 Bathrooms (2 Ensuite) : Balcony : Secure Under Ground Parking : Porter : Lifts : Large Communal Entrance : Westminster Council Tax Band G : EPC rating B

Key Features

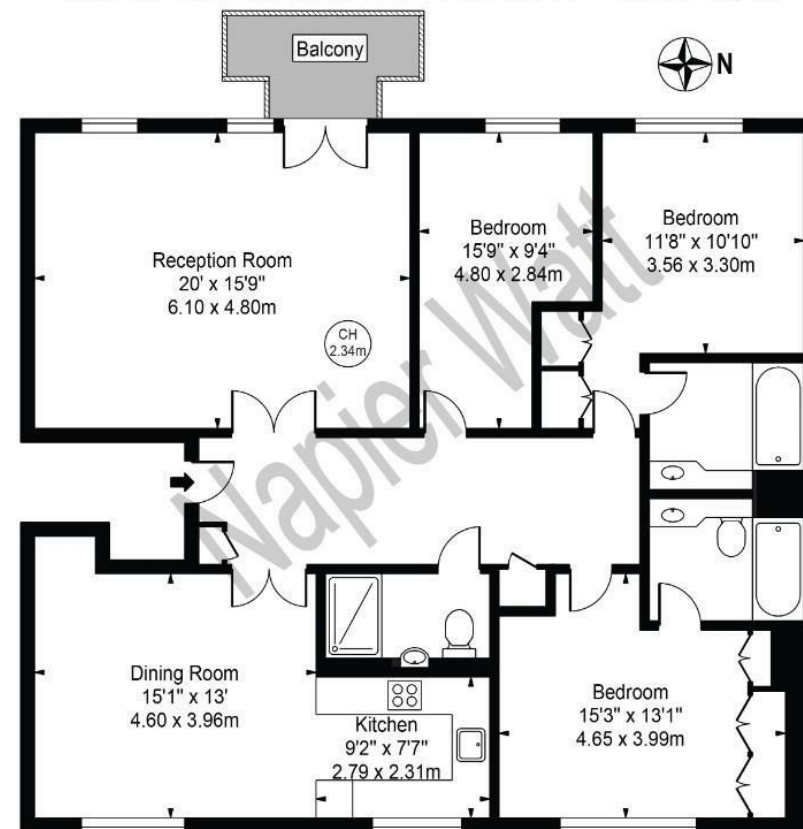
- 24 HOUR PORTER
- LIFTS
- LARGE LOBBY WITH DISABLED ACCESS
- LIGHT AND AIRY
- BALCONY
- PARKING
- COMMUNAL GARDENS

Terms

Fees & Charges: Tenancies exceeding £100,000 Per annum £480 inc VAT, Tenancies where a company is a tenant £480 Inc VAT.

Richbourne Court

Approx. Gross Internal Area 1425 Sq Ft - 132.39 Sq M



Fifth Floor

For Illustration Purposes Only - Not To Scale

This floor plan should be used as a general outline for guidance only and does not constitute in whole or in part an offer or contract. Any intending purchaser or lessee should satisfy themselves by inspection, searches, enquiries and full survey as to the correctness of each statement. Any areas, measurements or distances quoted are approximate and should not be used to value a property or be the basis of any sale or let.

IMPORTANT: We would inform prospective purchasers that these sales particulars have been prepared as a general guide only. A detailed survey has not been carried out, nor the services, appliances and fittings tested. Room sizes should not be relied upon for furnishing purposes and are approximate. If floor plans are included, they are for guidance only and illustration purposes only and may not be to scale. If there are any important matters likely to affect your decision to buy, please contact us before viewing the property.