



49, Onslow Gardens,
, SW7

£1,731 Per Week,

NAPIER WATT

T: 0207 935 0011

E: enquiries@napierwatt.co.uk

W: napierwatt.co.uk

35 Berkeley Square, Mayfair, London, W1J 5BF







Description

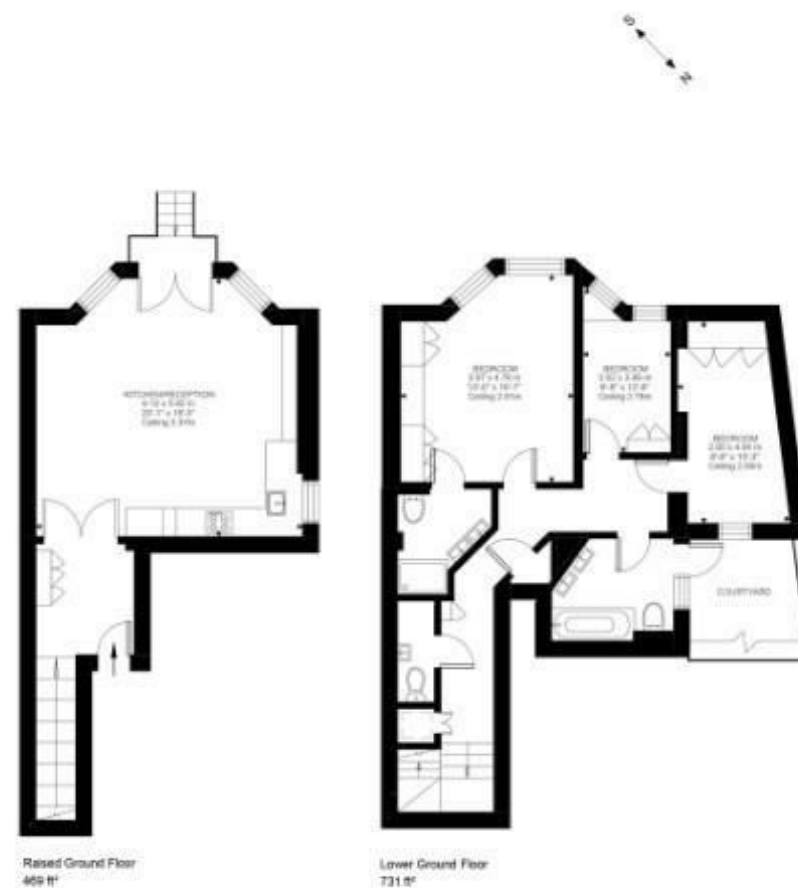
Situated on the ground and lower ground floor of a meticulously refurbished stucco-fronted period building, this three-bedroom maisonette offers a blend of elegance and modern comfort. The living room connects to a patio, providing access to the expansive greenery of Onslow Gardens. The accommodation of approximately 1,200sq ft comprises a living room with a fully fitted open-plan kitchen, master bedroom with an en-suite bathroom, two additional double bedrooms, shower room and a cloakroom housing a washing machine and tumble dryer. The property is offered fully furnished and provides direct access to the communal gardens, overseen by a dedicated caretaker. Available, furnished.

3 Bedrooms : 2 Bathrooms : Guest Cloakroom : Fully Furnished : Direct Access to Communal Gardens : Royal Borough of Kensington & Chelsea: Council Tax Band: G : EPC rating C

Key Features

Terms

Fees & Charges: Tenancies exceeding £100,000 Per annum £480 inc VAT, Tenancies where a company is a tenant £480 Inc VAT.



IMPORTANT: We would inform prospective purchasers that these sales particulars have been prepared as a general guide only. A detailed survey has not been carried out, nor the services, appliances and fittings tested. Room sizes should not be relied upon for furnishing purposes and are approximate. If floor plans are included, they are for guidance only and illustration purposes only and may not be to scale. If there are any important matters likely to affect your decision to buy, please contact us before viewing the property.