



Hyde Park Towers 1 Porchester Terrace, Hyde Park, W2

Asking Price £2,400,000, Leasehold

NAPIER WATT

T: 0207 935 0011

E: enquiries@napierwatt.co.uk

W: napierwatt.co.uk

35 Berkeley Square, Mayfair, London, W1J 5BF





Description

A recently refurbished second floor apartment situated opposite Kensington Gardens.

Comprising three double bedrooms, three bathrooms, separate kitchen, south-west facing reception room and balcony. This high specification apartment is meticulously furnished and dressed whilst further benefiting from 24 hour portorage. Secure parking is available under separate negotiation. Located in Bayswater with Queensway, Notting Hill and Lancaster Gate all conveniently close by.

Entrance Hall : Reception Room : Kitchen : 3 Bedrooms : 3 Bathrooms : Balcony : Parking : Air Conditioning : EPC Rating B : Council Tax H

Key Features

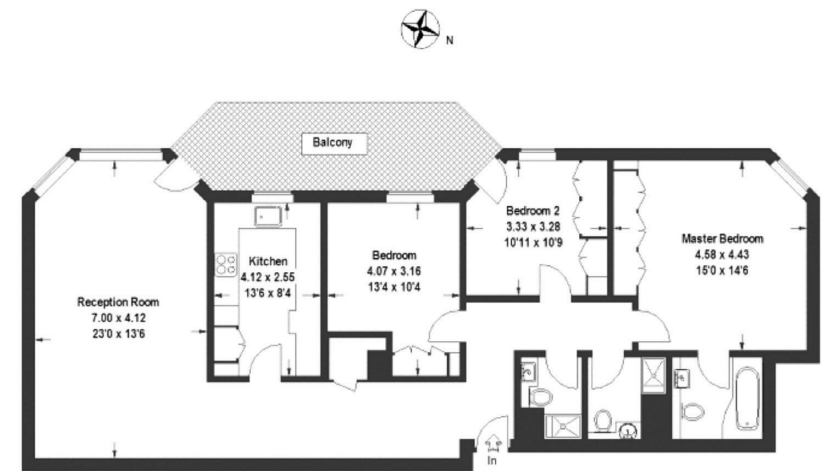
- 24 HOUR PORTER
- PARKING
- PART AIR CONDITIONING
- 300M QUEENSWAY
- BALCONY
- PASSENGER LIFT
- 100 M HYDE PARK

Terms

Leasehold : 999 years from 1 January 1977 ie 953

Service charge £5140 half year

Council Tax H



Second Floor

Hyde Park Towers
 Approximate Gross Internal Area = 115.8 sq m / 1246 sq ft
 Illustration for Identification Purpose Only. Not to Scale.

IMPORTANT: We would inform prospective purchasers that these sales particulars have been prepared as a general guide only. A detailed survey has not been carried out, nor the services, appliances and fittings tested. Room sizes should not be relied upon for furnishing purposes and are approximate. If floor plans are included, they are for guidance only and illustration purposes only and may not be to scale. If there are any important matters likely to affect your decision to buy, please contact us before viewing the property.