



Portman Towers, George Street, W1H

Asking Price £3,200,000, Leasehold

NAPIER WATT

T: 0207 935 0011

E: enquiries@napierwatt.co.uk

W: napierwatt.co.uk

35 Berkeley Square, Mayfair, London, W1J 5BF







Description

A luxurious two bedroom, two bath apartment set on the fifth floor with balcony offered in immaculate condition and ready for immediate occupation.

Portman Towers is an exclusive modern block located just off Portman Square and opposite Montagu Square within a short walk to Selfridges and Marylebone High Street. It benefits from lifts, 24 hour portering, and views over Montagu Square.

: Entrance Hall : Double Reception Room : Kitchen : 2 Double Bedrooms : 2 Bathroom (1 Ensuite) : Guest WC : Balcony : Parking : EPC

Key Features

- 24 HOUR UNIFORMED PORTER
- VIEWS OVER MONTAGU SQUARE
- SECURE PARKING
- LIFTS
- GATED DEVELOPMENT
- BALCONY

Terms

Leasehold - 9 September 2013 to 20 June 2177 Approx. 154 Years Remaining

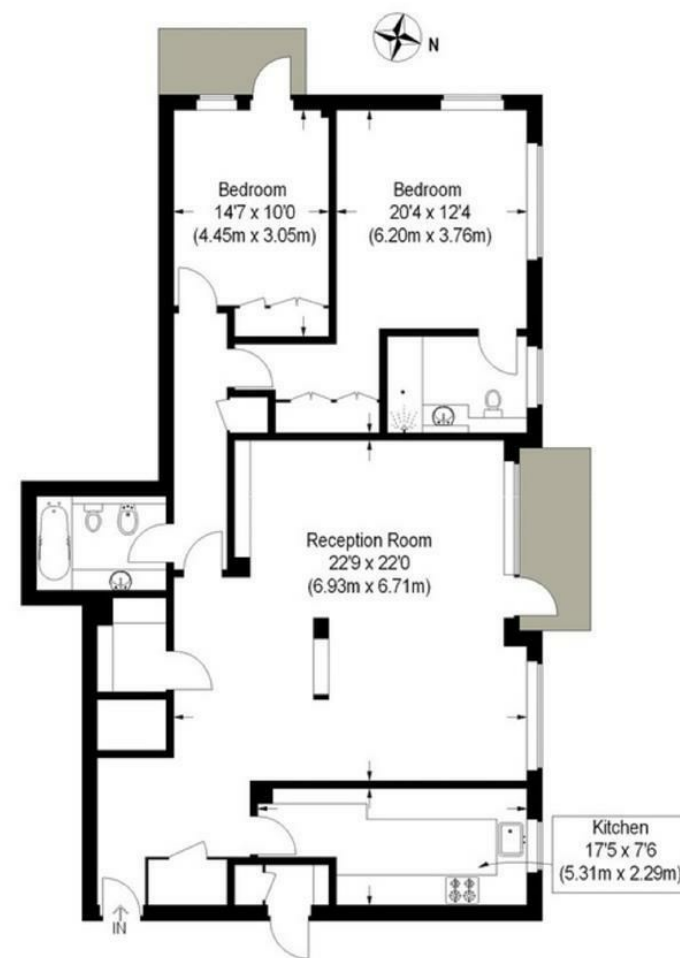
Ground Rent £0

Service Charge - £26,100 Per annum

Council Tax Band :G

George Street, W1

Approximate Gross Internal Area
1313 sq ft / 122 sq m



Fifth Floor = 1313 sq ft / 122 sq m

IMPORTANT: We would inform prospective purchasers that these sales particulars have been prepared as a general guide only. A detailed survey has not been carried out, nor the services, appliances and fittings tested. Room sizes should not be relied upon for furnishing purposes and are approximate. If floor plans are included, they are for guidance only and illustration purposes only and may not be to scale. If there are any important matters likely to affect your decision to buy, please contact us before viewing the property.