



15 Portman Square,
Marylebone, W1H

Asking Price £2,450,000, Leasehold

NAPIER WATT

T: 0207 935 0011

E: enquiries@napierwatt.co.uk

W: napierwatt.co.uk

35 Berkeley Square, Mayfair, London, W1J 5BF







Description

A three bedroom, three bathroom apartment situated on the fourth floor of this popular portered mansion block in Portman Square. This well proportioned apartment has an internal floor area covering 1,152 sq.ft (107 sq.m). The property comprises 3 bedrooms (2 en suites), a large reception dining room and a family bathroom, with the added benefit of access to the residents garden in Portman Square, along with it's great location for shopping and transport links, just a few moments away from Oxford Street, Baker Street, Marble Arch and Bond Street.

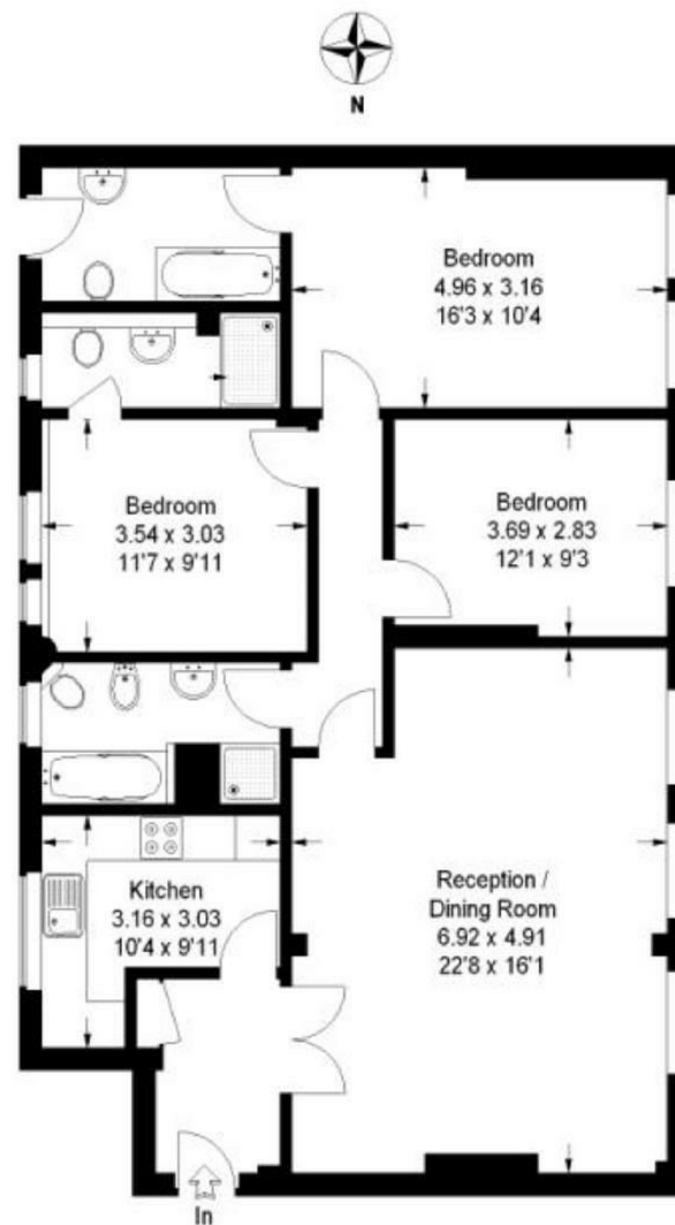
Entrance Hall : Reception Room : Kitchen : 3 Bedrooms : 3 Bathrooms (2 Ensuite) : Access To Garden Square : Council Tax G : EPC D

Key Features

- LIFTS
- VIEWS OVER HOME HOUSE
- WESTERLY ASPECT
- COMMUNAL HEATING
- ACCESS TO PORTMAN SQUARE
- LONG LEASE
- 24 HOUR PORTER
- COMMUNAL HOT WATER

Terms

Leasehold : 22 March 2151 ie 128 years
Council Tax Westminster Band G



IMPORTANT: We would inform prospective purchasers that these sales particulars have been prepared as a general guide only. A detailed survey has not been carried out, nor the services, appliances and fittings tested. Room sizes should not be relied upon for furnishing purposes and are approximate. If floor plans are included, they are for guidance only and illustration purposes only and may not be to scale. If there are any important matters likely to affect your decision to buy, please contact us before viewing the property.