



32a Walton Street,
Knightsbridge, SW3

Asking Price £1,695,000, Leasehold - Share of Freehold

NAPIER WATT

T: 0207 935 0011
E: enquiries@napierwatt.co.uk
W: napierwatt.co.uk

35 Berkeley Square, Mayfair, London, W1J 5BF







Description

Sole Agents Napier Watt are pleased to offer for sale this recently refurbished and immaculately presented garden flat arranged over the lower ground floor of this stucco fronted period corner building. The property has been comprehensively refurbished and thoughtfully arranged comprising a spacious reception room, contemporary kitchen, a master bedroom with built-in wardrobe and an en-suite bathroom, a further double bedroom, shower room and useful desk

2 Bedrooms : 2 Bathrooms : Reception Room : Kitchen : Garden : EPC D

Key Features

- EXCELLENT CONDITION INTERIOR DESIGNED
- SHARE OF FREEHOLD
- STORAGE VAULTS
- PRIVATE ENTRANCE
- LARGE PRIVATE PATIO
- 200M FROM HARRODS
- CORNER OF BEAUCHAMP PLACE

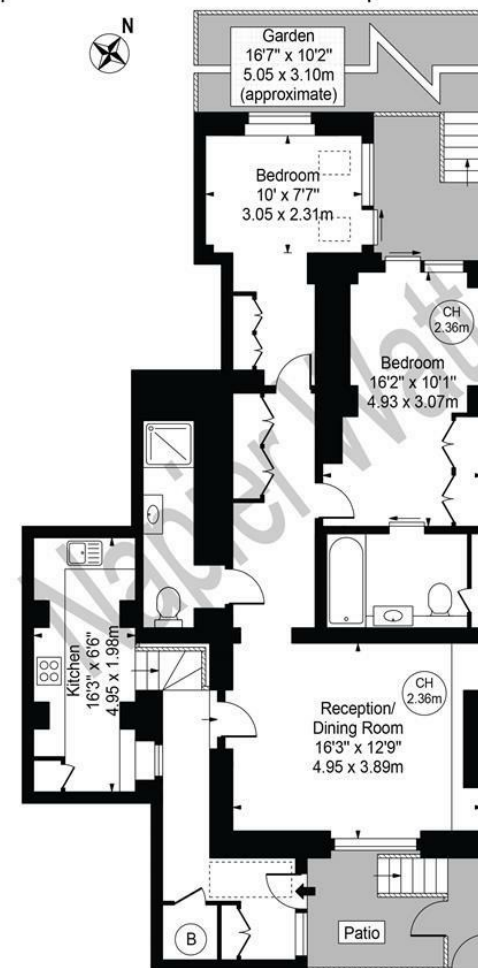
Terms

Leasehold and Share of Freehold -999 years from 25 December 1996

Ground Rent : A peppercorn

EPC : D

Walton Street
Approx. Gross Internal Area 991 Sq Ft - 92.07 Sq M



Lower Ground Floor
For Illustration Purposes Only - Not To Scale

This floor plan should be used as a general outline for guidance only and does not constitute in whole or in part an offer or contract. Any intending purchaser or lessee should satisfy themselves by inspection, searches, enquiries and full survey as to the correctness of each statement. Any areas, measurements or distances quoted are approximate and should not be used to value a property or be the basis of any sale or let.

IMPORTANT: We would inform prospective purchasers that these sales particulars have been prepared as a general guide only. A detailed survey has not been carried out, nor the services, appliances and fittings tested. Room sizes should not be relied upon for furnishing purposes and are approximate. If floor plans are included, they are for guidance only and illustration purposes only and may not be to scale. If there are any important matters likely to affect your decision to buy, please contact us before viewing the property.