



Duke Street Mansions Duke Street,
Mayfair, W1K

Asking Price £2,900,000, Leasehold

NAPIER WATT

T: 0207 935 0011
E: enquiries@napierwatt.co.uk
W: napierwatt.co.uk

35 Berkeley Square, Mayfair, London, W1J 5BF







Description

This duplex apartment on Duke Street comprises of three bedrooms, three bathrooms, reception room and separate kitchen. The building has lift access. Duke Street is located just off Grosvenor Square, Duke Street Mansions is situated by the recently regenerated Brown Hart Gardens. A short walk from Oxford Street and well located for the shops, restaurants and other amenities of Mayfair and the West End. Local transport links include Bond Street tube station (0.1 miles) for the Jubilee and Central lines (all distances are approximate).

3 Bedrooms : Bathroom : Shower Room : En Suite Shower Room : Reception Room : Kitchen : Lift : EPC Rating D :

Key Features

- EXCELLENT CONDITION
- 100M OXFORD STREET
- CLOSE TO BROWN HART GARDENS
- GOOD CEILING HEIGHT
- LIFT
- SHORT WALKING TO SELFRIDGES
- AIR CONDITIONING
- 4TH FLOOR

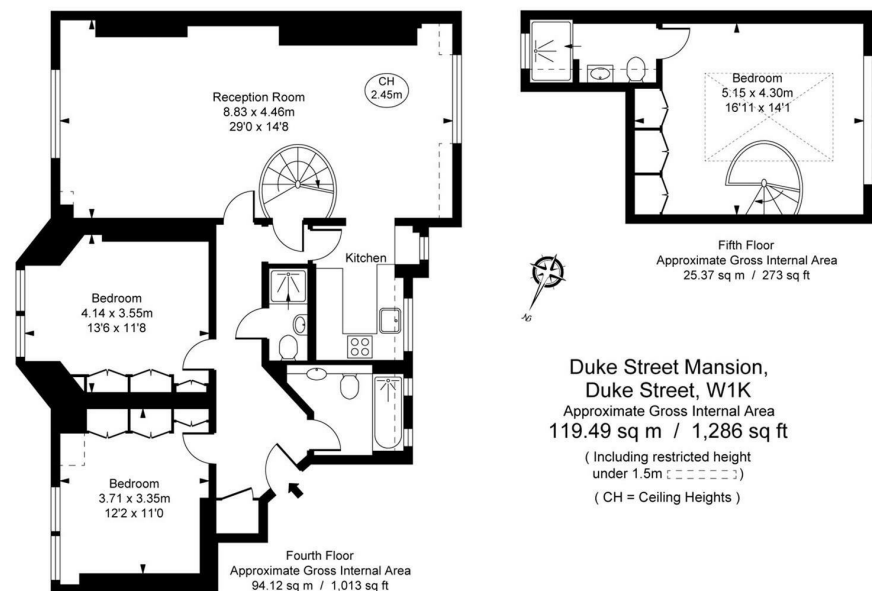
Terms

Leasehold : 27 January 2014 and expiring on 28 December 2135

Service Charge : Approx £10,000 pa

EPC : D

Council Tax Westminster G



IMPORTANT: We would inform prospective purchasers that these sales particulars have been prepared as a general guide only. A detailed survey has not been carried out, nor the services, appliances and fittings tested. Room sizes should not be relied upon for furnishing purposes and are approximate. If floor plans are included, they are for guidance only and illustration purposes only and may not be to scale. If there are any important matters likely to affect your decision to buy, please contact us before viewing the property.