



Portsea Hall,
Portsea Place, W2

Asking Price £900,000, Leasehold

NAPIER WATT

T: 0207 935 0011

E: enquiries@napierwatt.co.uk

W: napierwatt.co.uk

35 Berkeley Square, Mayfair, London, W1J 5BF



Description

This 2nd floor, two bedroom apartment is located in Portsea Hall, an art deco purpose built block with 24 hour concierge with lift a short walk to Marble Arch and Hyde Park. The accommodation comprises of a large, bright reception room benefitting from balcony with south westerly views over Portsea Place, two double bedrooms, separate kitchen, bathroom and cloakroom. The apartment would make an ideal pied a terre or rental investment.

EPC C

Key Features

- 24 HOUR PORTERAGE
- 2ND FLOOR WITH LIFT
- CLOSE TO CONNAUGHT VILLAGE
- EPC C
- LONG LEASE
- BALCONY
- EASY WALK HYDE PARK

Terms

LEASEHOLD : 131 years and 6 months (less 10 days) from 29 September 1993 ie 102 years

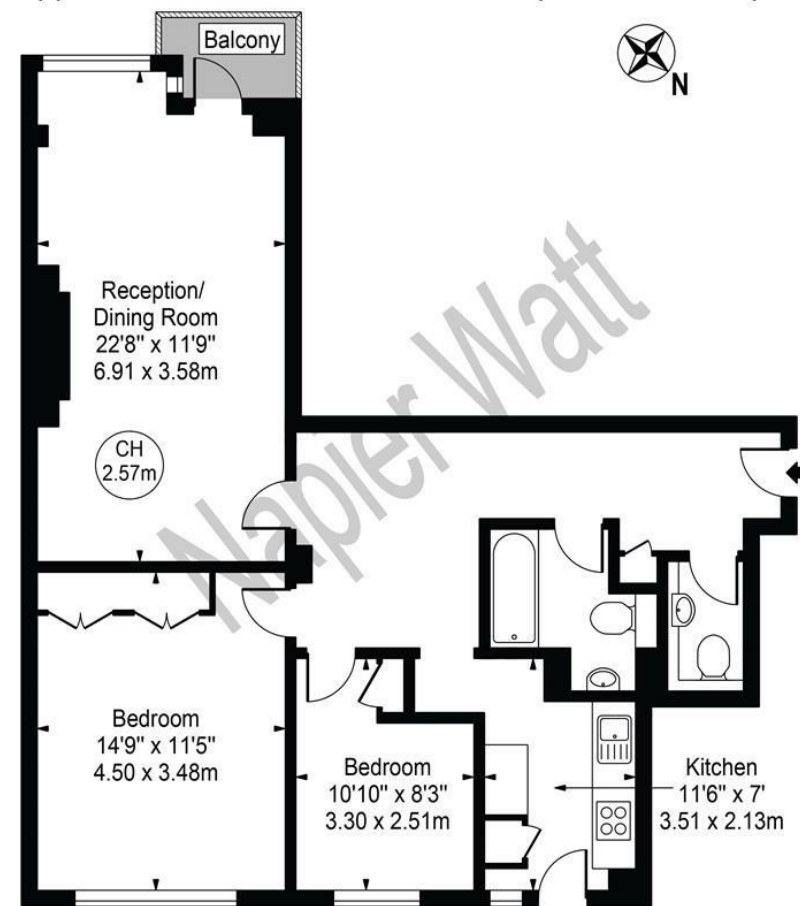
GROUND RENT : £250 rising to £1,500pa

EPC C

Service charge is £2748 for 6 months so £5,496 pa

Portsea Hall

Approx. Gross Internal Area 836 Sq Ft - 77.67 Sq M



Second Floor
For Illustration Purposes Only - Not To Scale

This floor plan should be used as a general outline for guidance only and does not constitute in whole or in part an offer or contract. Any intending purchaser or lessee should satisfy themselves by inspection, searches, enquiries and full survey as to the correctness of each statement. Any areas, measurements or distances quoted are approximate and should not be used to value a property or be the basis of any sale or let.

IMPORTANT: We would inform prospective purchasers that these sales particulars have been prepared as a general guide only. A detailed survey has not been carried out, nor the services, appliances and fittings tested. Room sizes should not be relied upon for furnishing purposes and are approximate. If floor plans are included, they are for guidance only and illustration purposes only and may not be to scale. If there are any important matters likely to affect your decision to buy, please contact us before viewing the property.