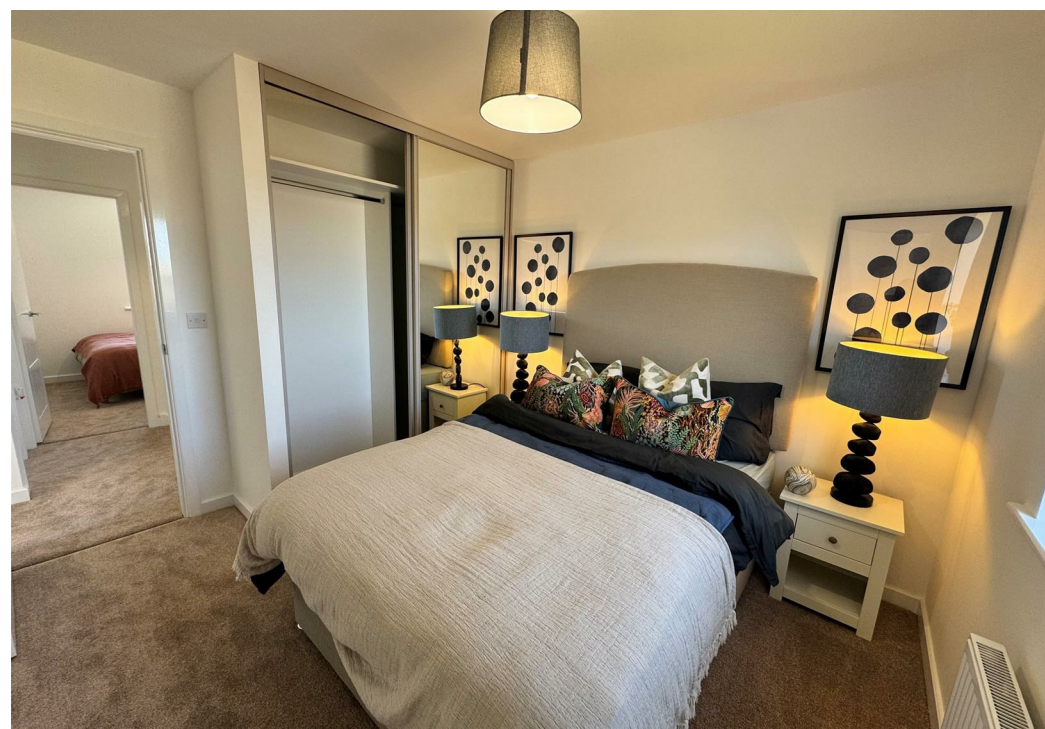
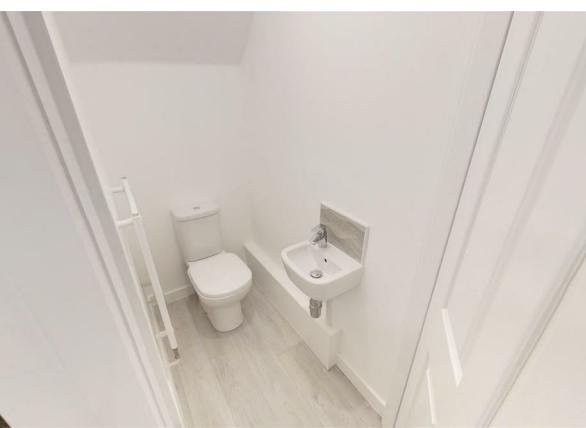


Plot 136, Hurworth Meadows, Neasham Road, Darlington, DL2 1DL.
£209,995

estates⁴
'The Art of Property'



Plot 136, Hurworth Meadows, Neasham Road, Darlington, DL2 1DL.
£209,995
Council Tax Band:

First time buyer deal: £5,000 paid towards deposit, £1,000 paid towards legal fee's, flooring included, Integrated appliances Fridge/Freezer and Dishwasher included.

THE SAGE is a stunning detached Three bedroom family home. The rear lounge offers the ideal space for socialising with family and friends, while bifold door lead out onto a private rear garden, creating even more space to enjoy.

There is also a front aspect kitchen/dining space and a downstairs WC.

Upstairs, the property features a principal bedroom with a fitted wardrobe and an En-suite, as well as two further bedrooms and a family bathroom.

Like all properties at the Hurworth Meadows, The Sage comes complete with premium insulation, solar panels, and an electric vehicle charging port.

EPC BAND B

These houses are sold on a FREEHOLD basis.
There is an estate management charge of approx.
£110 + VAT pa (24/25)

Principal elevation

Entrance hallway

Ground floor w/c

Lounge

15'2" x 10'9" (4.64 x 3.30)

Kitchen/dining area

15'1" x 8'3" (4.61 x 2.52)

First floor landing

Principal bedroom

10'9" x 9'3" (3.30 x 2.84)

En-suite

5'11" x 5'7" (1.81 x 1.71)

Second Bedroom

8'8" x 8'7" (2.65 x 2.62)

Third Bedroom

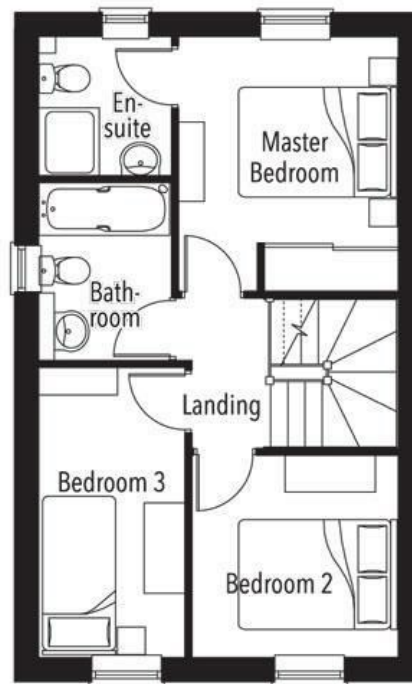
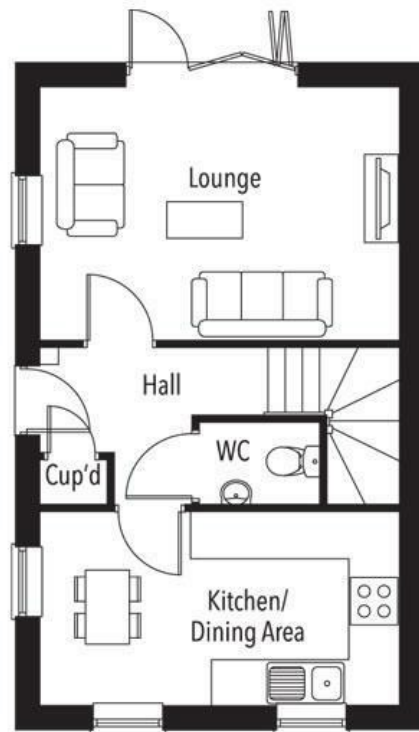
12'3" x 6'2" (3.75 x 1.90)

Bathroom

7'7" x 5'7" (2.32 x 1.71)

Rear garden





estates⁴
 'The Art of Property'

65 Duke Street

Darlington

County Durham

DL3 7SD

01325 804850

sales@estatesgroup.co.uk

<https://estates-theartofproperty.co.uk/>

Energy Efficiency Rating		
	Current	Potential
Very energy efficient - lower running costs		
(92 plus) A		
(81-91) B		
(69-80) C		
(55-68) D		
(39-54) E		
(21-38) F		
(1-20) G		
Not energy efficient - higher running costs		
England & Wales <small>EU Directive 2002/91/EC</small>		