

Astral House

Ruislip • Middlesex • HA4 6SE

Asking Price: £340,000



coopers
est 1986

Astral House

Ruislip • Middlesex • HA4 6SE

Situated within the sought-after Astral House development in the heart of Ruislip, this beautifully presented two-bedroom, two-bathroom apartment offers modern living in a prime location. Perfectly suited for first-time buyers, downsizers, or investors, this well-designed property combines style, comfort, and convenience. Within walking distance of South Ruislip Tube Station (Chiltern and Central Lines) and only a short drive to the A40/M40/M25 motorway junctions.

Set in Astral House

Underfloor Heating

Off Street Parking

En-Suite

Spacious

Close To South Ruislip Station

Short Drive To A40 Junction

Double Glazing

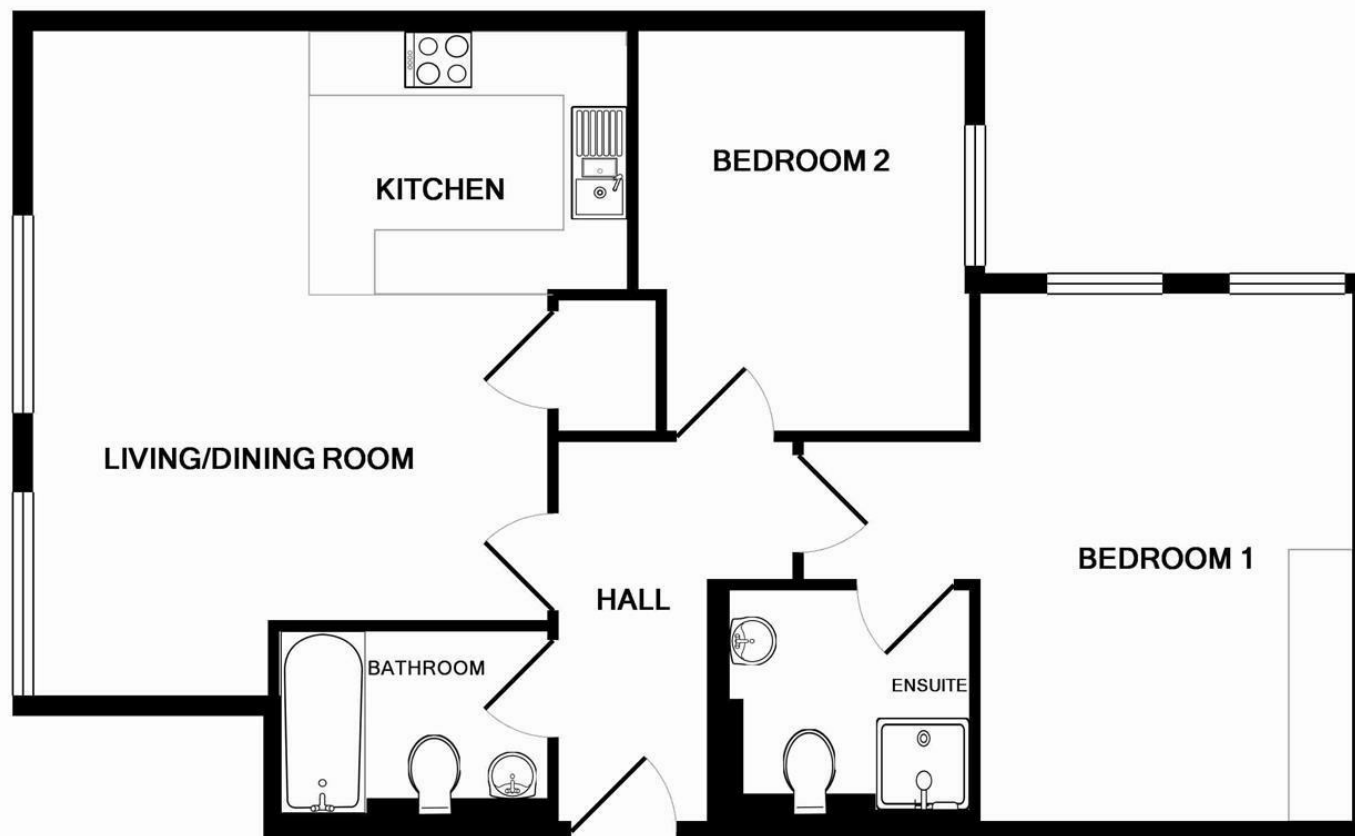
No Chain

708 Sq.ft

These particulars are intended as a guide and must not be relied upon as statements of fact. Your attention is drawn to the Important Notice on the last page.







TOTAL APPROX. FLOOR AREA 708 SQ.FT. (65.8 SQ.M.)

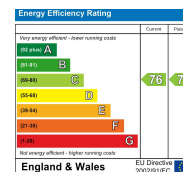
Whilst every attempt has been made to ensure the accuracy of the floor plan contained here, measurements of doors, windows, rooms and any other items are approximate and no responsibility is taken for any error, omission, or mis-statement. This plan is for illustrative purposes only and should be used as such by any prospective purchaser. The services, systems and appliances shown have not been tested and no guarantee as to their operability or efficiency can be given

Made with Metropix ©2015

coopers
est 1986

**71 Victoria Road, Ruislip Manor,
Middlesex, HA4 9BH**
ruislipmanor@coopersresidential.co.uk

CoopersResidential.co.uk



Important Notice: These particulars, whilst believed to be accurate are set out as a general outline only for guidance and do not constitute any part of an offer or contract. Intending purchasers should not rely on them as statements or representation of fact, but must satisfy themselves by inspection or otherwise has the authority to make or give any representation or warranty in respect of the property.