

Whitby Road

Ruislip • Middlesex • HA4 9DP
Offers In Excess Of: £475,000



coopers
est 1986

Whitby Road

Ruislip • Middlesex • HA4 9DP

A rare opportunity to acquire this charming two-bedroom B' Type Manor home, ideally positioned on the ever-popular Whitby Road in Ruislip. Offered to the market chain free, the property blends classic character with great potential, making it perfect for first-time buyers, downsizers, or investors alike.

CHAIN FREE

TERRACED 'B' TYPE MANOR HOME

TWO DOUBLE BEDROOMS

LIVING ROOM

KITCHEN/DINER

LARGE PRIVATE GARDEN

FAMILY BATHROOM

POTENTIAL TO EXTEND (STPP)

These particulars are intended as a guide and must not be relied upon as statements of fact. Your attention is drawn to the Important Notice on the last page.





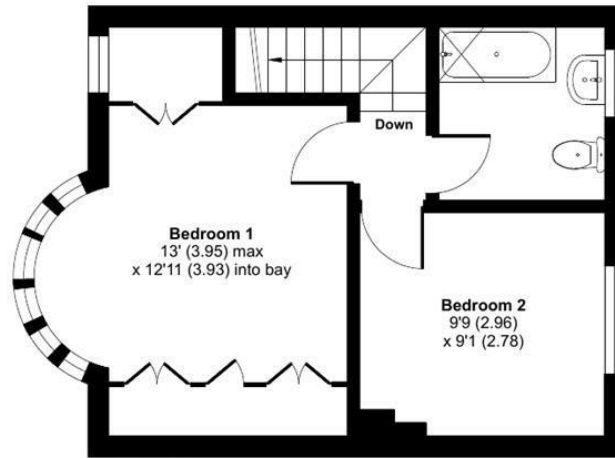
Whitby Road, Ruislip, HA4

Approximate Area = 666 sq ft / 61.8 sq m

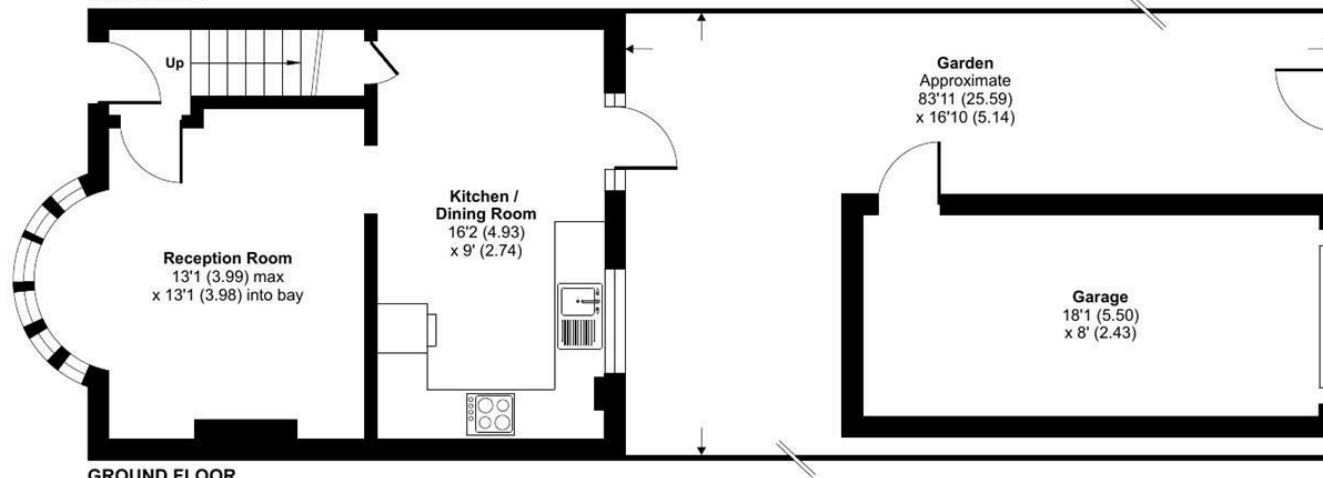
Garage = 144 sq ft / 13.3 sq m

Total = 810 sq ft / 75.1 sq m

For identification only - Not to scale



FIRST FLOOR



GROUND FLOOR



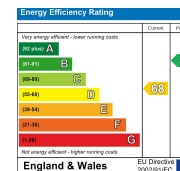
Floor plan produced in accordance with RICS Property Measurement 2nd Edition, Incorporating International Property Measurement Standards (IPMS2 Residential). © nchecom 2025. Produced for Coopers. REF: 1302058

coopers
est 1986

coopers
est 1986

71 Victoria Road, Ruislip Manor,
Middlesex, HA4 9BH
ruislipmanor@coopersresidential.co.uk

CoopersResidential.co.uk



Important Notice: These particulars, whilst believed to be accurate are set out as a general outline only for guidance and do not constitute any part of an offer or contract. Intending purchasers should not rely on them as statements or representation of fact, but must satisfy themselves by inspection or otherwise has the authority to make or give any representation or warranty in respect of the property.