

Tranquil Lane

Harrow • • HA2 0GS
Offers In Excess Of: £375,000



coopers
est 1986

Tranquil Lane

Harrow • • HA2 0GS

Offered to the market with fantastic views, this stunning two bedroom apartment boasting a private balcony, and offers buyers a spacious and trendy property, ready to move straight into. This stunning abode is ideally located with good transport links, shops and popular local schools. A viewing of this wonderful apartment is recommended as soon as possible.

TWO BEDROOM APARTMENT

LARGER THAN AVERAGE

TWO BATHROOMS

BALCONY

AMPLE STORAGE

GATED ALLOCATED PARKING

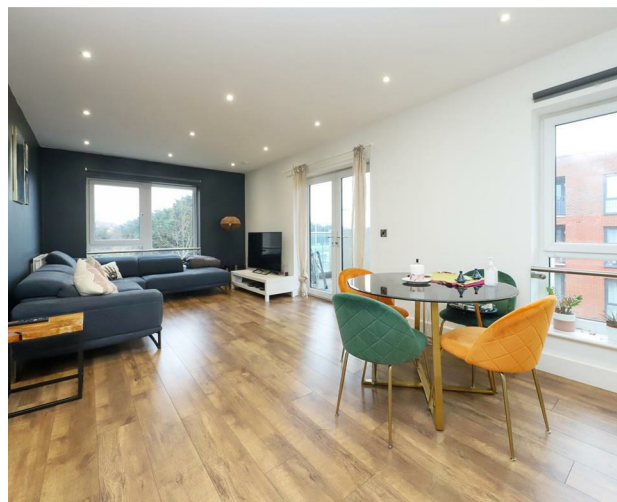
WALKING DISTANCE TO TUBE

GREAT CONDITION THROUGHOUT

CLOSE TO LOCAL AMENITIES

734 SQ.FT

These particulars are intended as a guide and must not be relied upon as statements of fact. Your attention is drawn to the Important Notice on the last page.





1ST FLOOR
734 sq.ft. (68.2 sq.m.) approx.



coopers
est 1986

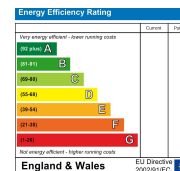
TOTAL FLOOR AREA : 734 sq.ft. (68.2 sq.m.) approx.
Whilst every attempt has been made to ensure the accuracy of the floorplan contained here, measurements of doors, windows, rooms and any other items are approximate and no responsibility is taken for any error, omission or mis-statement. This plan is for illustrative purposes only and should be used as such by any prospective purchaser. The services, systems and appliances shown have not been tested and no guarantee as to their operability or efficiency can be given.
Made with Memphis i32024.



coopers
est 1986

71 Victoria Road, Ruislip Manor,
Middlesex, HA4 9BH
ruislipmanor@coopersresidential.co.uk

CoopersResidential.co.uk



Important Notice: These particulars, whilst believed to be accurate are set out as a general outline only for guidance and do not constitute any part of an offer or contract. Intending purchasers should not rely on them as statements or representation of fact, but must satisfy themselves by inspection or otherwise has the authority to make or give any representation or warranty in respect of the property.