



Woodborough Road
Putney, SW15

CHESTERTONS





A magnificent seven-bedroom detached period home, positioned on one of West Putney's most prestigious residential roads. Originally built in 1870, this substantial property combines impressive proportions with timeless architectural detail, offering exceptional living and entertaining space across four floors.

The interior features elegant high ceilings, generous room sizes, and classic period features throughout. The ground floor is thoughtfully arranged to maximise natural light and garden views, centred around a grand entrance hall with a sweeping staircase connecting all levels. From here, you're led to a formal reception room, a spacious family room, and a well-appointed kitchen that opens into a bright conservatory — all with direct access to the landscaped west-facing garden.

Additional ground floor spaces include a study, utility room, cloakroom, larder, two guest WCs, and an integrated garage. On the lower ground floor, a gym and secondary family/media room provide further flexibility for modern family living.

The upper floors host seven well-proportioned bedrooms. The principal suite includes a generous main bedroom, en-suite bathroom, and two walk-in wardrobes. The first floor also features three additional double bedrooms, a family bathroom, and an en-suite shower room. The top floor offers three more double bedrooms, another bathroom, en-suite shower, and extensive eaves storage.

The 83-foot rear garden enjoys a private west-facing aspect, complete with a sunken lawn, York Stone terrace, mature planting, and a deck-level swimming pool - ideal for entertaining. A rear gate provides direct access into 'The Pleasance' park.

A gated driveway at the front offers off-street parking.

Woodborough Road is ideally situated for access to green open spaces including Putney Heath and Barnes Common, as well as the Roehampton Club. The area is particularly well served by a wide range of excellent state and private schools. Transport connections are also strong, with Barnes and Putney mainline stations, along with East Putney Underground (District Line), all close by. Nearby amenities on Upper Richmond Road and Barnes High Street complete the appeal of this outstanding family home.



- Detached West Putney period home
- Over 5,000 sq. ft of accommodation
- 83ft west-facing landscaped garden
- Gated driveway and garage
- Private gate leading to 'The Pleasance' park

Asking Price £5,000,000

Score	Energy rating	Current	Potential
92+	A		
81-91	B		
69-80	C		
55-68	D	55 D	70 C
39-54	E		
21-38	F		
1-20	G		

Tenure: Freehold

Local Authority: Wandsworth Council

Council Tax Band: D

Chestertons South-West Prime Sales

153 Upper Richmond Road

Putney

London

SW15 2TX

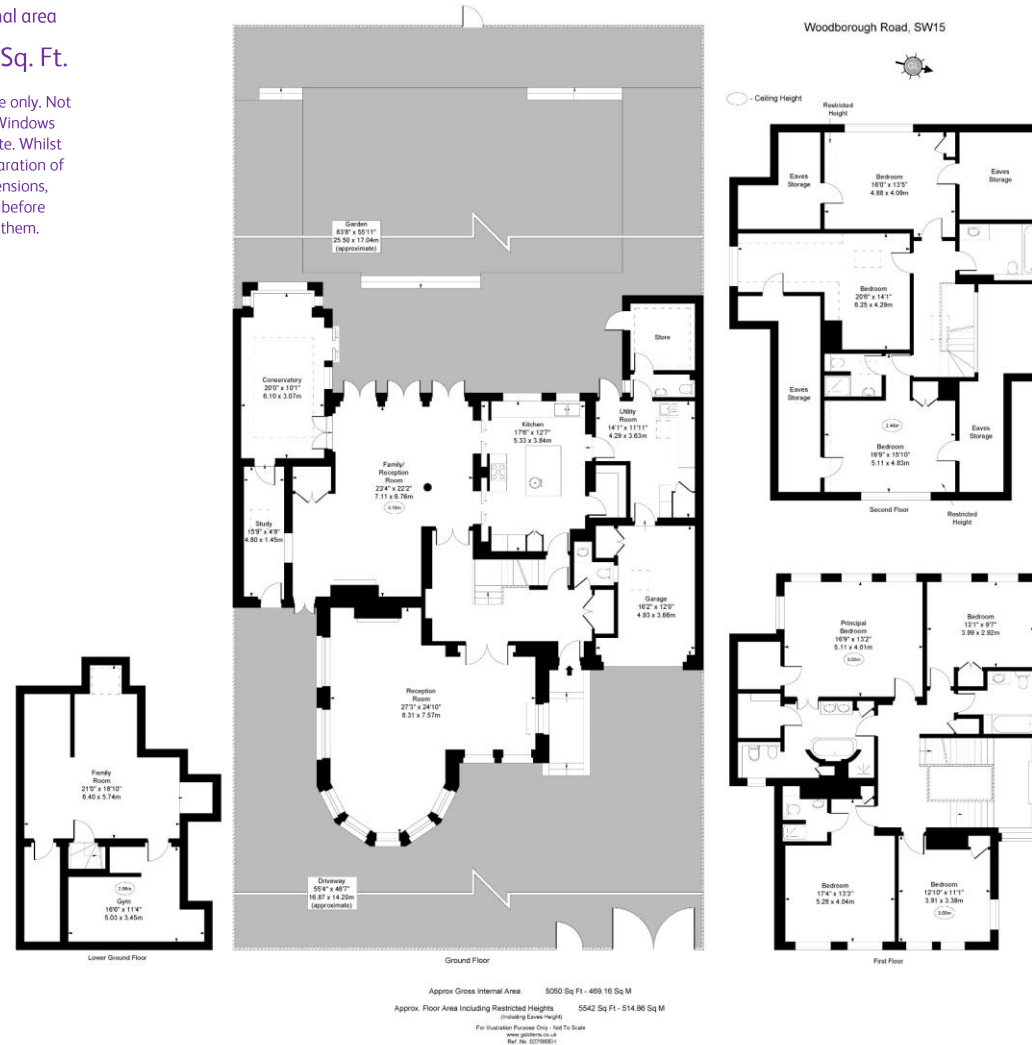
swprime@chestertons.co.uk

Woodborough Road, SW15

Approximate gross Internal area

469 Sq. M / 5050 Sq. Ft.

This plan is for layout guidance only. Not drawn to scale unless stated. Windows and door openings approximate. Whilst every care is taken in the preparation of this plan, please check all dimensions, shapes and compass bearings before making decisions reliant upon them.



Chesterton UK Services Limited trading as Chestertons for themselves and for the vendor of this property whose agents they are, give notice that (i) these particulars do not constitute any part of an offer or contract, (ii) all statements contained within these particulars are made without responsibility on the part of Chestertons or the vendor, (iii) whilst made in good faith, none of the statements contained within these particulars are to be relied upon as a statement or representation of fact, (iv) any intending purchasers must satisfy themselves by inspection or otherwise as to the correctness of each of the statements contained within these particulars, (v) the vendor does not make or give either Chestertons or any person in their employment any authority to make or give representation or warranty whatsoever in relation to this property. Wide angle lenses may be used. ©Copyright Chestertons | Chesterton UK Services Limited | Registered Office 40 Connaught Street, Hyde Park, London W2 2AB Registered Company Number 05334580.