



# Belvedere House

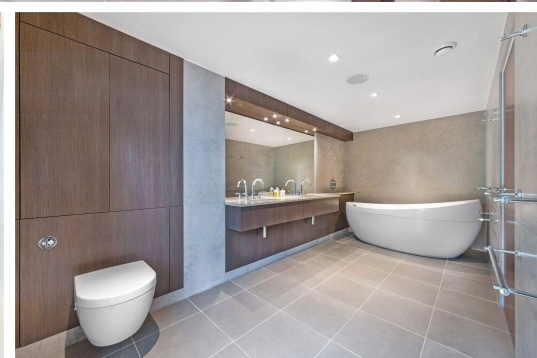
Kew Bridge, TW8

£2,950,000 Asking Price

Fantastic waterside penthouse apartment situated on the 6th floor of the prestigious Kew Bridge development. 3 river-facing outdoor terraces, gym, parking (RTP) & 24 hour concierge. EPC rating B

**CHESTERTONS**  
*Kew*





# Belvedere House

Kew Bridge, TW8

- 60ft (Approximate) Waterside Roof Terrace
- 24 Hour Concierge
- Residents Gym
- Underground Parking (Right To Park - Not Allocated)





A breath-taking & unique Penthouse apartment located in the prestigious St George's development.

An impressive 60ft (approximate) roof terrace with far reaching river views spanning from East to West & 2 further terraces. The reception room is equally impressive with floor to ceiling windows & leading through to a custom designed fully fitted kitchen. 3 beautiful & spacious bedrooms, a master en suite that cannot fail to impress, 2 further bathrooms & a utility room.

The apartment has been interior designed to the highest specification & has a multi-room audio/visual system throughout.

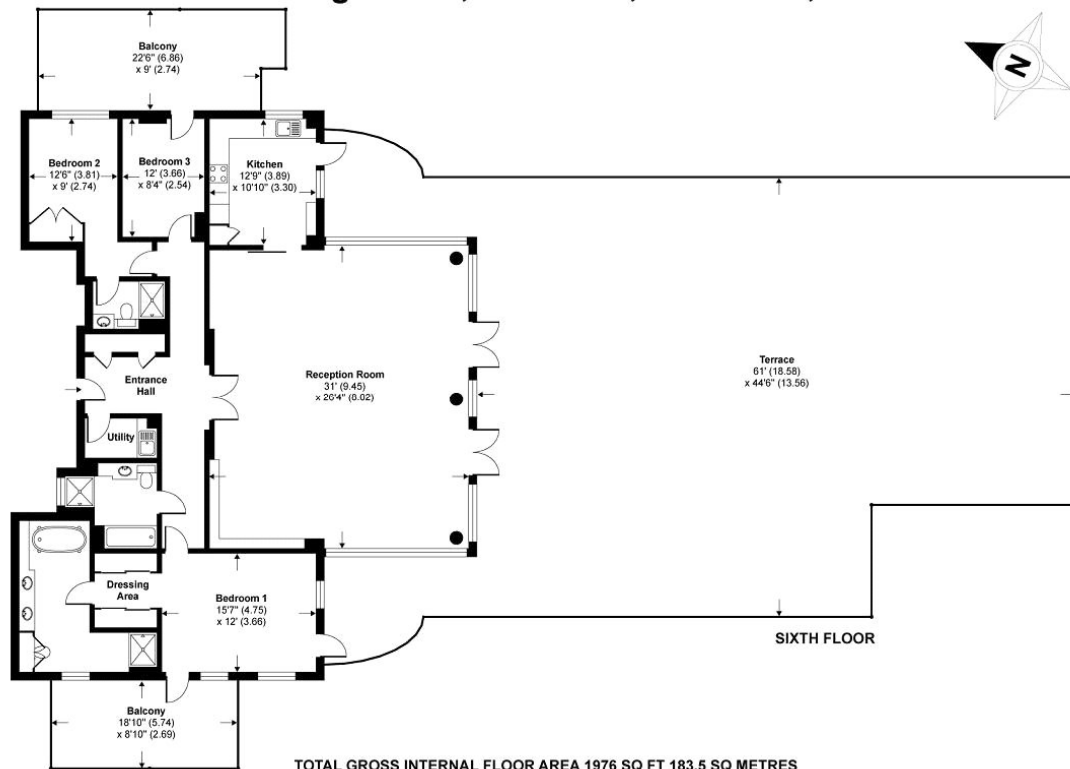
**Tenure:** Leasehold  
**Service Charge:** £0  
**Ground Rent:** £0

Energy Efficiency Rating		
	Current	Potential
Very energy efficient - lower running costs		
(92+) <b>A</b>		
(81-91) <b>B</b>	84	85
(69-80) <b>C</b>		
(55-68) <b>D</b>		
(39-54) <b>E</b>		
(21-38) <b>F</b>		
(1-20) <b>G</b>		
Not energy efficient - higher running costs		
England, Scotland & Wales		EU Directive 2002/91/EC

### *Chestertons Kew Sales*

306 Sandycombe Road  
 Kew  
 Richmond Surrey  
 TW9 3NG  
[sales.kew@chestertons.com](mailto:sales.kew@chestertons.com)  
 020 8104 0340  
[chestertons.com](http://chestertons.com)

## Kew Bridge Road, Brentford, Middlesex, TW8



**TOTAL GROSS INTERNAL FLOOR AREA 1976 SQ FT 183.5 SQ METRES**

Whilst every attempt has been made to ensure the accuracy of the floor plan contained here, measurements of doors, windows and rooms are approximate and no responsibility is taken for any error, omission or misstatement. These plans are for representation purposes only as defined by RICS Code of Measuring Practice and should be used as such by any prospective purchaser. Specifically no guarantee is given on the total square footage of the property if quoted on this plan. Any figure given is for initial guidance only and should not be relied on as a basis of valuation.

Copyright nichecom.co.uk 2013 Produced for Chesterton Humberts REF : 432636