



Vicarage Drive
East Sheen, SW14

CHESTERTONS





This substantial detached home located close to Richmond Park on one of East Sheen's premier roads is offered with vacant possession and no onward chain.

Presented in good condition throughout there are further options for extension as per neighbouring properties, subject to any necessary planning consents.

This wonderful home would be ideal for young families being close to popular local schools, the wide-open spaces of Richmond Park and the fact it has ample off-street parking. Down-sizers will also appreciate the large amount of extended reception and kitchen space the property offers on the ground floor.

On the top floor there are three double bedrooms, a large family bathroom and access to the loft providing ample storage space or room for development of further bedrooms.

Vicarage Drive is a wonderful community of just 18 homes situated on a no through road cul-de-sac providing a safe and peaceful low traffic environment for its residents.

- Detached house
- Three bedrooms
- Garden
- Off street parking
- Parkside location
- No onward chain

Asking Price £2,000,000

Energy Efficiency Rating		
	Current	Potential
Very energy efficient - lower running costs		
(92+) A		
(81-91) B		
(69-80) C	70	80
(55-68) D		
(39-54) E		
(21-38) F		
(1-20) G		
Not energy efficient - higher running costs		
England, Scotland & Wales		EU Directive 2002/91/EC

Tenure: Freehold

Local Authority: London Borough of Richmond upon Thames

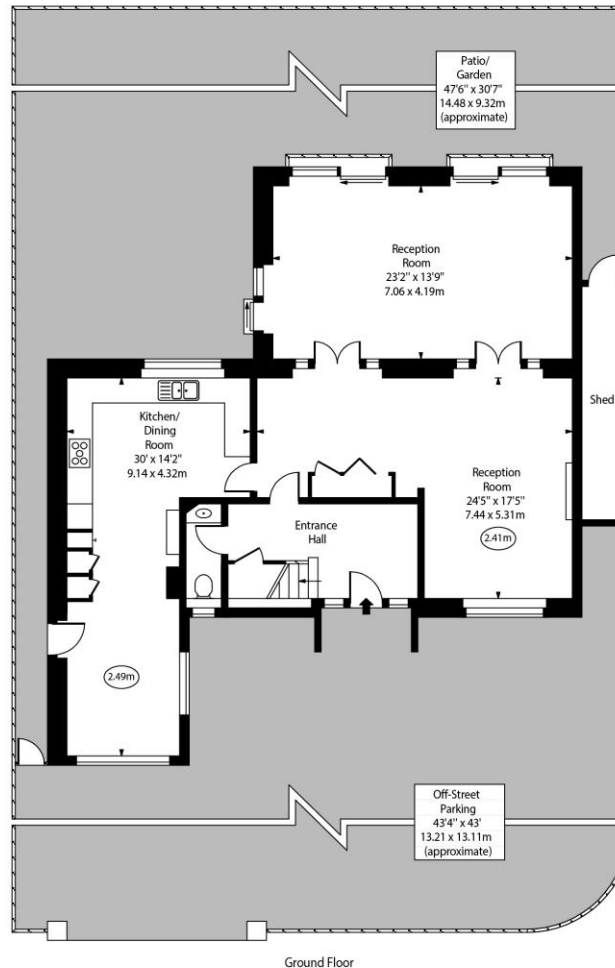
Council Tax Band: H

Chestertons East Sheen Sales

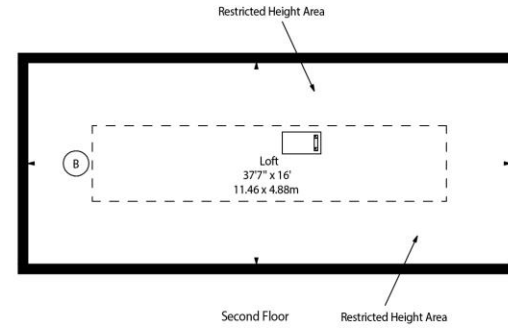
254A Upper Richmond Road West
East Sheen
London
SW14 8AG
sheen@chestertons.co.uk
020 8104 0580

Vicarage Drive,
East Sheen, SW14

○ - Ceiling Height



Ground Floor



First Floor

Approx Gross Internal Area 1884 Sq Ft - 175.02 Sq M
(Excluding Loft & Shed)

Approx Gross Internal Area 2484 Sq Ft - 230.76 Sq M
(Including Loft)
(Excluding Shed)

For Illustration Purposes Only - Not To Scale
www.goldlens.co.uk
Ref. No. 026465E

Chesterton UK Services Limited trading as Chestertons for themselves and for the vendor of this property whose agents they are, give notice that (i) these particulars do not constitute any part of an offer or contract, (ii) all statements contained within these particulars are made without responsibility on the part of Chestertons or the vendor, (iii) whilst made in good faith, none of the statements contained within these particulars are to be relied upon as a statement or representation of fact, (iv) any intending purchasers must satisfy themselves by inspection or otherwise as to the correctness of each of the statements contained within these particulars, (v) the vendor does not make or give either Chestertons or any person in their employment any authority to make or give representation or warranty whatsoever in relation to this property. Wide angle lenses may be used. ©Copyright Chestertons | Chesterton UK Services Limited | Registered Office 40 Connaught Street, Hyde Park, London W2 2AB Registered Company Number 05334580.

