



The Penthouse, Apt 5 Chenies Park Road, Bowdon, Altrincham, WA14 3JJ  
£10,000 PCM

A STUNNING LUXURY PENTHOUSE APARTMENT SPANNING APPROXIMATELY 3,700 sq ft WITH EXCELLENT TRANSPORT ROUTES NEARBY. Direct Lift Access. Hall. Family/Dining Room. Kitchen. Living Room. Utility Room. Cinema Room. Four Double Bedrooms. Four Bath/Shower Rooms. Two Secure Parking Spaces. Communal Hall. Extensive Communal Gardens. Council Tax Band H. Furnished OR Unfurnished, Landlord is Flexible. Available NOW.

A truly outstanding penthouse apartment extending to around 3,700 sq ft, occupying the entire second floor within the prestigious gated Chenies development by Crosby Homes.

Offering the perfect blend of luxury and space, this exceptional residence features generously sized rooms, a high-spec finish throughout, and direct lift access straight into the apartment. The property includes secure underground parking for two vehicles and a beautifully landscaped south-facing sun terrace, providing stunning views over the immaculate communal gardens.

The layout has been thoughtfully designed for both entertaining and day-to-day living, with French doors opening onto the terrace from the lounge, breakfast kitchen, and the dining hall, which also incorporates a relaxed living area. The kitchen is superbly appointed with granite worktops and premium integrated appliances, while the entrance and dining hall are finished with wood flooring and elegant marble gas fireplaces that add a touch of sophistication.

At the heart of the home is a luxurious principal suite, complete with a spacious bedroom and sitting area, a fully fitted dressing room, and a stylish en-suite bathroom featuring a Jacuzzi corner bath. Two additional double bedrooms also benefit from en-suite bathrooms, and there is a generous fourth bedroom that offers flexibility as a guest room or home office.

Combining secure living with an abundance of space and natural light, this penthouse presents a rare opportunity to own a home of distinction in one of the area's most desirable developments.

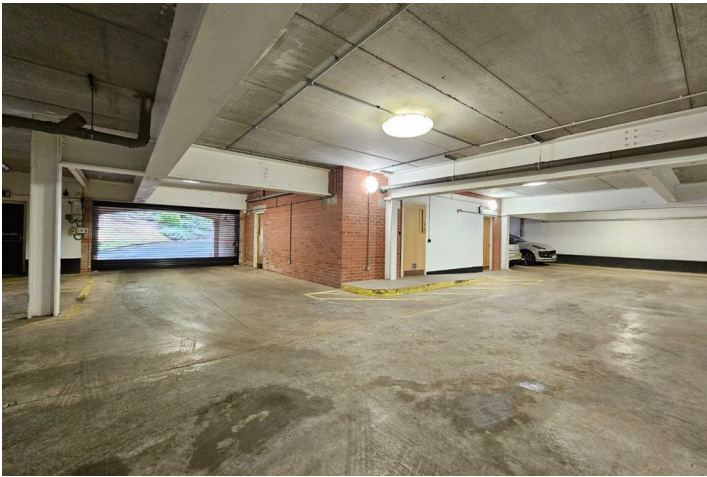














## Floorplans