



WEST RIDING

---

SELLING HOMES



## Village Manor, Uppermill, Saddleworth

£230,000

2 1

This charming 2-bedroom ground floor apartment is ideally situated in the heart of Uppermill Village, offering both convenience and comfort. With spacious interiors, the bedrooms come with built-in wardrobes, and the main bedroom features an ensuite bathroom for added privacy and luxury. The ground-level location provides easy access, making it suitable for wheelchair users and ensuring effortless mobility around the home.



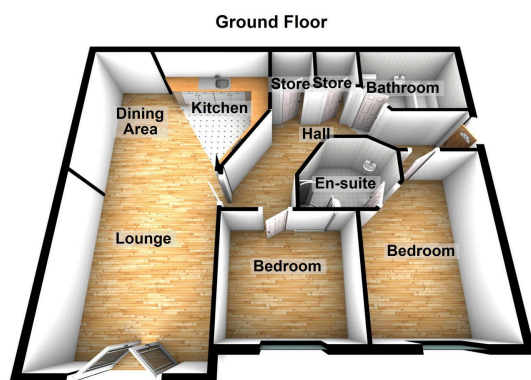


Floor Area: sq. ft.

Tenure: Freehold

Service Charge: £1180 per annum

Ground Rent: £ per annum



[hello@west-riding.co.uk](mailto:hello@west-riding.co.uk)

01457 819181

[www.west-riding.co.uk](http://www.west-riding.co.uk)