



Waterside, Greenfield, Saddleworth

£795,000



ALL. TOGETHER. BETTER.

www.kirkham-property.co.uk

Waterside, Greenfield, Saddleworth

This stone built 4/5 bedroom executive detached property is situated on a small gated development of just three properties in Greenfield on the edge of open countryside and with fantastic views to Dovestones reservoir to the front. Off road parking is by means of a block paved driveway for approximately three cars and a double garage with remote doors. The Poplars is an impressive sized home with ample living space for a growing family.



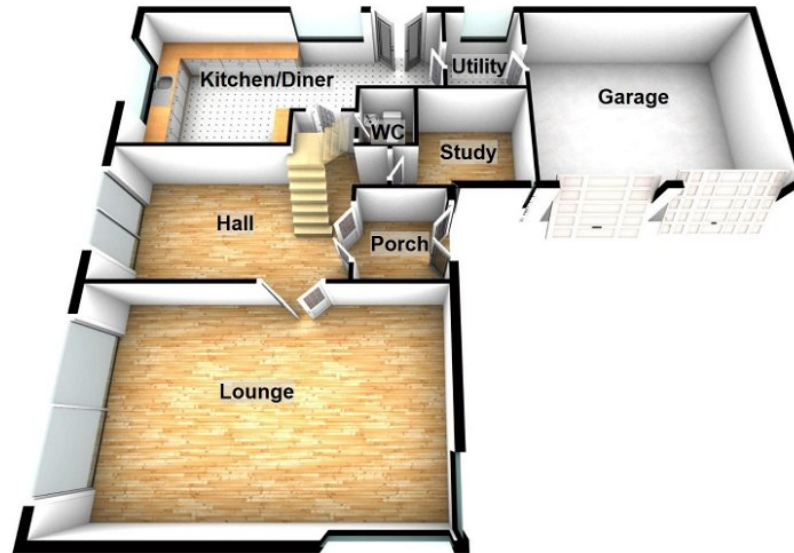




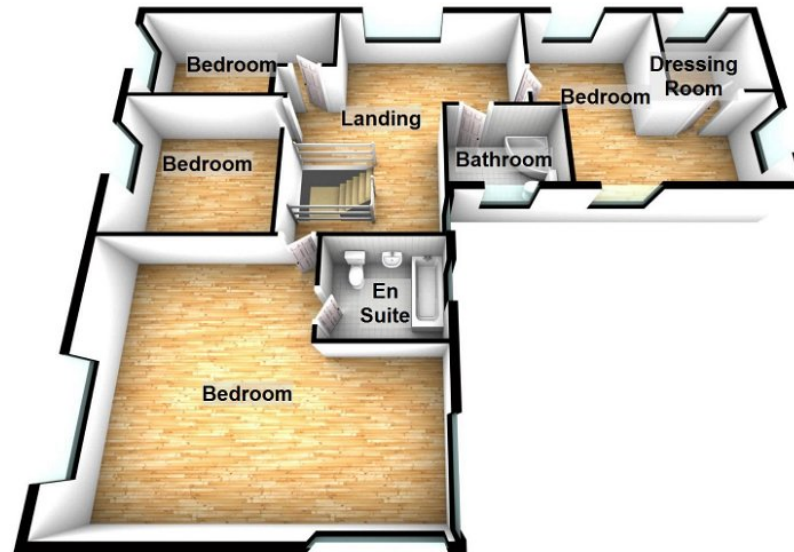




Ground Floor



First Floor



Uppermill Office

35 High Street
Uppermill,
Saddleworth
OL3 6HS

Monday – Friday. 9am – 5pm
Saturday. 10am – 3 pm
uppermill@kirkham-property.co.uk
t: 01457 810 076
f: 01457 810 222

Out of hours telephone service
Monday – Thursday 8:30am – 7pm
Friday – 8:30am – 5pm
Saturday – Sunday 10am – 3pm