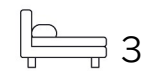




Living
made
better

Myrtle Road
Hampton Hill, TW12 1QE



Asking Price £824,950

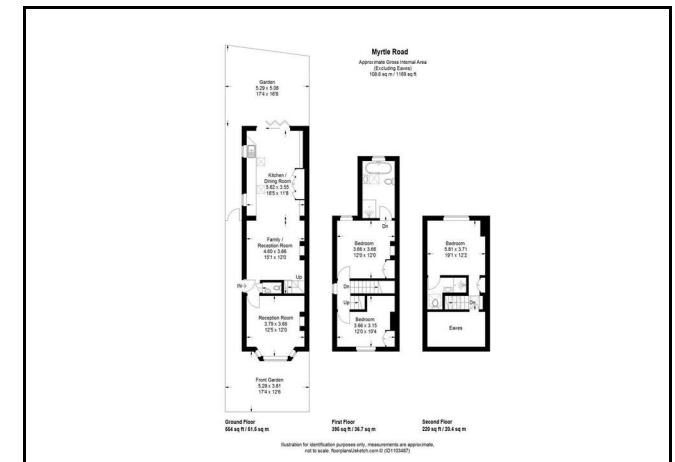
Myrtle Road, Hampton Hill TW12 1QE

Madison Brook

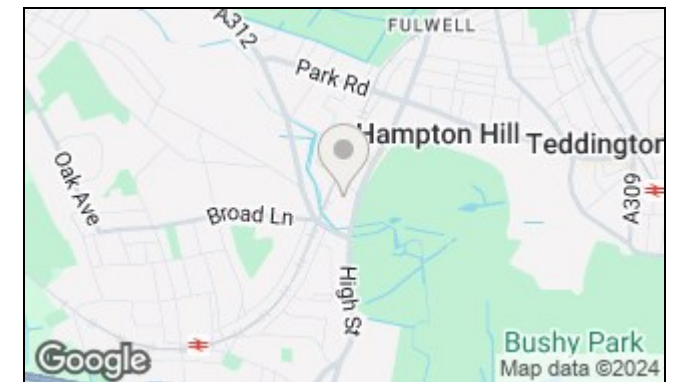
A beautifully presented and extended semi-detached Victorian family house with three bedrooms, two bath / shower rooms, and a lovely west facing private rear garden. A wealth of charming features includes high ceilings, cornicing, ceiling roses, wood flooring, cast iron radiators, sash windows, window shutters, and solid timber internal doors. There is an abundance of storage, double-glazing, gas central heating, and immaculately presented décor throughout the home. This location gives good access to the café's, bars, restaurants and amenities of Hampton Hill High Street, and the gates of Royal Bushy Park. Sought-after local schools, Holly Road recreational playground, Fulwell railway station, bus services and Hampton open air swimming pool are all close by.



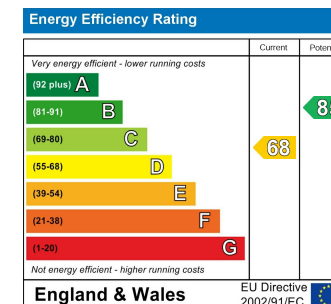
Floorplan



Area Map



Energy Efficiency Graph



These particulars, whilst believed to be accurate are set out as a general outline only for guidance and do not constitute any part of an offer or contract. Intending purchasers should not rely on them as statements of representation of fact, but must satisfy themselves by inspection or otherwise as to their accuracy. No person in this firm's employment has the authority to make or give any representation or warranty in respect of the property.

103 High Street, Hampton Hill, TW12 1NJ

Tel: 020 3946 6700 Email: hamptonhill@madisonbrook.com <https://madisonbrook.com/>