

## Flat 24, Central House 32-66 High Street , London, E15 2NS

Jake Charles Property is thrilled to present this one-bedroom flat in the heart of Stratford, E15. Offering contemporary living at its best, this well-presented home features a spacious and bright living area with large windows that fill the space with natural light.

The kitchen is fully equipped and offers ample storage, while the comfortable double bedroom comes with plenty of space. The tiled bathroom is also a good size. Residents can also enjoy exclusive access to a fully equipped on-site gym and a 24-hour concierge service for added security and convenience.

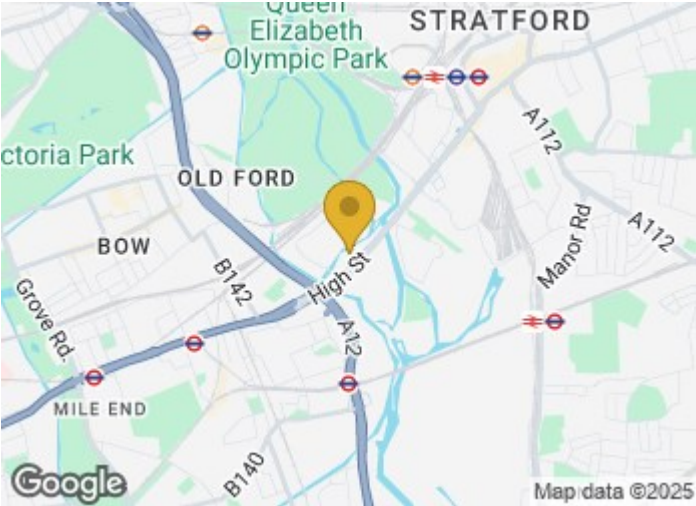
Situated a short walk from Stratford Station, Westfield Shopping Centre, Queen Elizabeth Olympic Park, and a variety of local bars, restaurants, and amenities, this apartment is perfect for professionals, Students or couples seeking a stylish and convenient home in one of East London's most sought-after locations.

**£1,475 Per month**

# Flat 24, Central House 32-66 High Street , London, E15 2NS

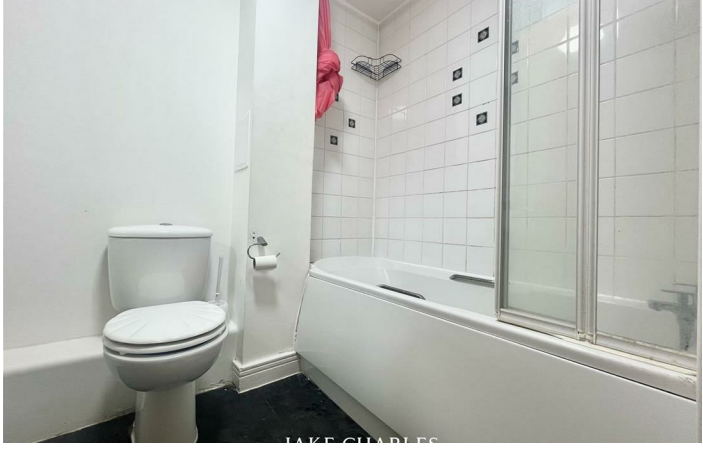
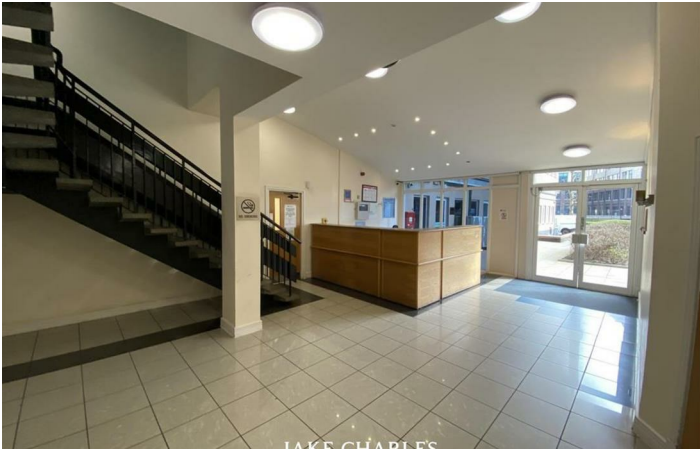


- Video Tour Available Upon Request
- 24-hour Concierge Service
- Spacious Living Area
- Lift Access
- Available Now
- Residents Gym
- Separate Kitchen
- Prime location
- Ideal For Professionals / Students
- First Floor



[Directions](#)







Floor Plan

These particulars, whilst believed to be accurate are set out as a general outline only for guidance and do not constitute any part of an offer or contract. Intending purchasers should not rely on them as statements of representation of fact, but must satisfy themselves by inspection or otherwise as to their accuracy. No person in this firms employment has the authority to make or give any representation or warranty in respect of the property.

