



- THREE BEDROOMS
- OPEN HOUSE VIEWING- TUESDAY
25TH FEBRUARY AND SATURDAY
1ST MARCH 11.00AM - 12.30PM
- NO UPPER CHAIN
- IN NEED OF COMPLETE
REFURBISHMENT

Ritcroft Street, Hemel Hempstead, HP3 8PF

Offers invited

A three bedroom end of terrace family home providing good size accommodation and in need of refurbishment, having double glazing, fitted kitchen and a good size garden. Situated in this residential area with easy access to Hempstead town center with its multiple shops and leisure facilities.

OPEN HOUSE VIEWING- TUESDAY 25TH FEBRUARY AND SATURDAY 1ST MARCH 11.00AM - 12.30PM



ENTRANCE Front door into entrance vestibule. Door to living room.

LIVING ROOM 20' 0" x 10' 5" (6.1m x 3.18m) Double glazed French doors to rear and double glazed windows to the front. Double radiator.

KITCHEN 8' 8" x 7' 4" (2.64m x 2.24m) Built-in wall and base units. Plumbing for washing machine. Small breakfast bar. Built in work services. Under stairs cupboard. Double radiator. Double glaze windows to rear.

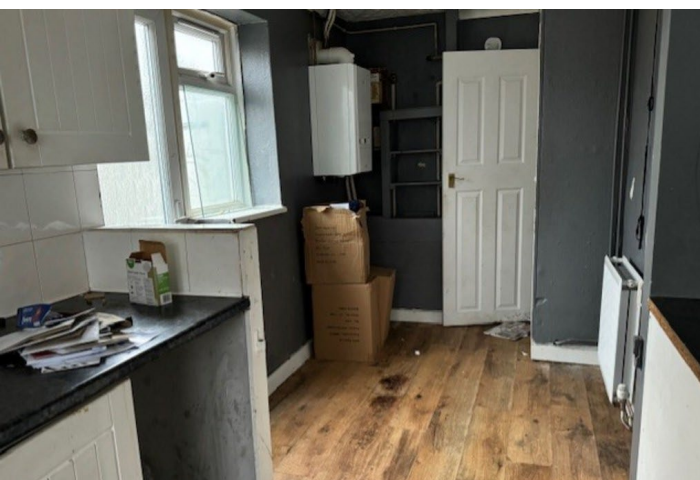
DINING AREA 5' 10" x 6' 2" (1.78m x 1.88m) Open plan small dining area. Double glazed door to garden. Double radiator. Wall Mounted combination central heating boiler.

BEDROOM 1 12' x 11' 6" (3.66m x 3.51m) Double glazed window to front. Single radiator.

BEDROOM 2 10' 2" x 7' 7" (3.1m x 2.31m) Double glazed window to rear. Single radiator.

BEDROOM 3 7' 6" x 5' 8" (2.29m x 1.73m) Laminate floor. Single radiator. Double glazed window to front.

FAMILY BATHROOM Panel bathroom with a shower attachments. Vanity sink unit Low flush WC.



REAR GARDEN 30' 0" x 45' 0" (9.14m x 13.72m) Rear garden 30' x 45' in length.

Pedestrian side access



17 Clarendon Road, Watford,
Hertfordshire, WD17 1JR

www.rennieandco.com
01923 221265
info@rennieandco.com

Agents Note: Whilst every care has been taken to prepare these sales particulars, they are for guidance purposes only. All measurements are approximate are for general guidance purposes only and whilst every care has been taken to ensure their accuracy, they should not be relied upon and potential buyers are advised to recheck the measurements