

For Sale

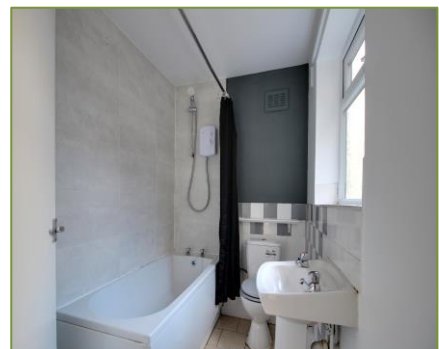
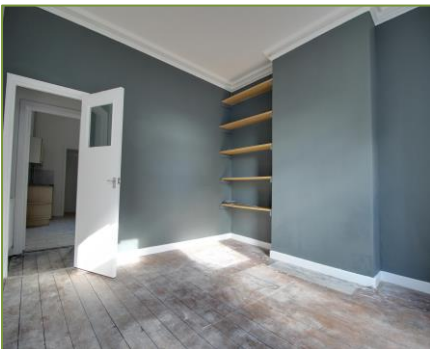


2b-4b Hucknall Road
Nottingham
NG5 1AB

T 0115 962 9770

E Nottingham@go-ps.co.uk

grangerandoaks.co.uk



Hartley Road,
Radford, NG7 3AD

Price: £135,000



Hartley Road, Radford, Nottingham

Price: £135,000



Information

NO UPWARD CHAIN.... This spacious three bedroom mid-terrace is ready to call home. Newly decorated, the house comes to market chain-free and ready for new owners to move straight in. The property has three very generous bedrooms, a spacious lounge, and a dining kitchen. At the rear of the ground floor, a single story extension houses the bathroom.

Summary of accommodation

- Three Double Bedrooms
- Dining Kitchen
- Rear Garden
- Excellent Public Transport
- Walking Distance to City
- Chain Free

Description

Living Room

Stripped wooden floorboards. Freshly decorated. Central heating radiator. Double Glazed window to front.

Dining Kitchen

A good sized dining kitchen with fitted wall and floor units. Double glazed window to rear. Door leads off to cellar and rear lobby.

Rear Lobby

Bathroom

White bathroom suite inc bath with electric shower over. Tiled floor and part-tiled walls. Central heating radiator. Double glazed window.

Cellar

Stairs & Landing

Bedroom 1

Stripped wooden floorboards. Freshly decorated. Central heating radiator. Double Glazed window to front.

Bedroom 2

Stripped wooden floorboards. Freshly decorated. Central heating radiator. Double Glazed window to rear. Airing cupboard. Gas boiler.

Stairs and Landing to Top Floor

Bedroom 3

Stripped wooden floorboards. Freshly decorated. Central heating radiator. Loft Access. Double Glazed window to front.

Outside

A low maintenance rear garden with shared access to the rear.

Hartley Road, Radford

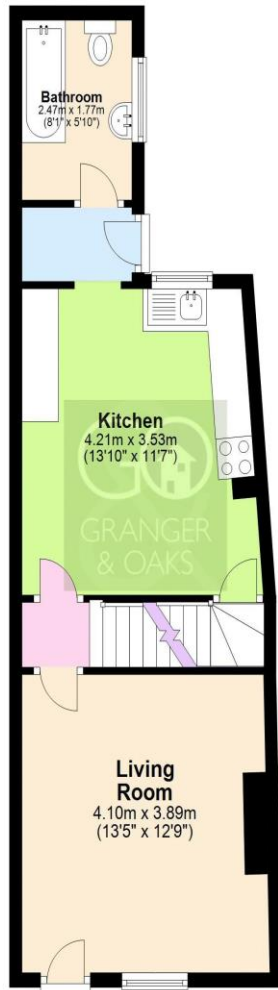
Nottingham

Price: £135,000



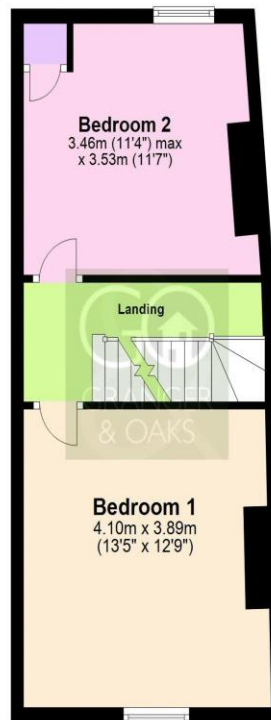
Ground Floor

Approx. 42.5 sq. metres (457.8 sq. feet)



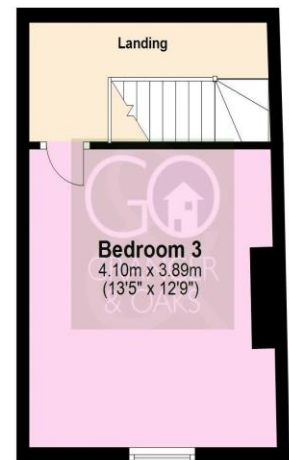
First Floor

Approx. 36.0 sq. metres (387.1 sq. feet)



Second Floor

Approx. 22.9 sq. metres (246.1 sq. feet)



Cellar

Approx. 20.0 sq. metres (215.2 sq. feet)



Total area: approx. 121.4 sq. metres (1306.2 sq. feet)

Score	Energy rating	Current	Potential
92+	A		
81-91	B		86 B
69-80	C		
55-68	D	55 D	
39-54	E		
21-38	F		
1-20	G		