

For Sale

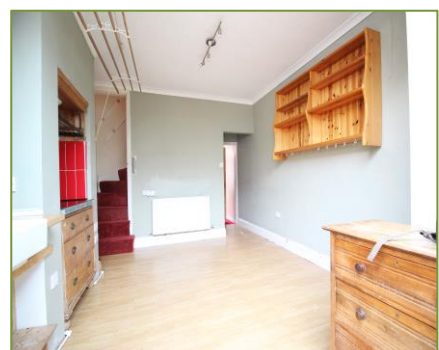


2b-4b Hucknall Road
Nottingham
NG5 1AB

T 0115 962 9770

E Nottingham@go-ps.co.uk

grangerandoaks.co.uk



Wesley Grove,
Carrington, Nottingham

Price: £200,000



Wesley Grove, Carrington, NG5 2BL

Price: £200,000



Information

CARRINGTON: POTENTIAL, POTENTIAL, POTENTIAL!! This traditional three bedroom mid-terrace comes to market free of chain and ripe for new owners to make it their own. Wesley Grove is a charming little Victorian terrace tucked away behind the school in the heart of popular Carrington. The house is full of character, has some original features, and has been extended to the rear.

Summary of accommodation

- Three Bedrooms
- Rear Extension
- Sought-After Location
- Gardens Front & Rear
- Requires Some Modernisation
- Chain Free

Description

Living Room

Carpeted. Stripped pine door to Dining Room. Feature fireplace. Original sash windows. Central heating radiator

Kitchen/Diner

An extended Kitchen/Dining room with double glazed French doors out to the garden and a ground floor WC and shower room leading off. Wood laminate flooring. Free-standing kitchen units. Central heating radiator

Shower & WC

A tiled walk-in mains shower. Sink & WC. Gas Combination Boiler.

Cellar

Leading off the rear hall, a stripped pine door reveals stairs down to useful cellar storage.

Stairs and Landing

Bedroom 1

A double bedroom at the front of the house. Original floorboards. Single glazed window. Central heating radiator. Over-stairs storage cupboard

Bedroom 2

To the rear. A single room. Painted floorboards. Central heating radiator. Single glazed window to rear. Over stairs storage cupboard.

Bathroom

Bath with electric shower over. Sink & WC. Window to rear elevation, Central heating radiator. Part tiled walls, Cork tiled floor covering.

Stairs to Top Floor

Bedroom 3

On the second floor. Painted floorboards. Built-in storage. Dormer window to front. Central heating radiator.

Outside

Wesley Grove is a short pedestrian terrace tucked away behind the primary school. The house has sits behind a small front garden, and has a larger decked garden to the rear.

11, Wesley Grove, Nottingham, NG5 2BL

Price: £200,000



Ground Floor

Approx. 44.4 sq. metres (477.9 sq. feet)



First Floor

Approx. 28.6 sq. metres (308.0 sq. feet)



Second Floor

Approx. 16.4 sq. metres (176.7 sq. feet)



Total area: approx. 89.4 sq. metres (962.6 sq. feet)

Score	Energy rating	Current	Potential
92+	A		
81-91	B		
69-80	C		76 C
55-68	D		
39-54	E	50 E	
21-38	F		
1-20	G		