

- FIRST FLOOR APARTMENT
- TWO DOUBLE BEDROOMS
- NEUTRALLY DECORATED
- GAS CENTRAL HEATING
- CLOSE TO SHOPS & AMENITIES
- REAR GARDEN



£1,150 PCM



2 BEDROOM



1 RECEPTION



1 BATHROOM



GARAGE

Seaside, Eastbourne

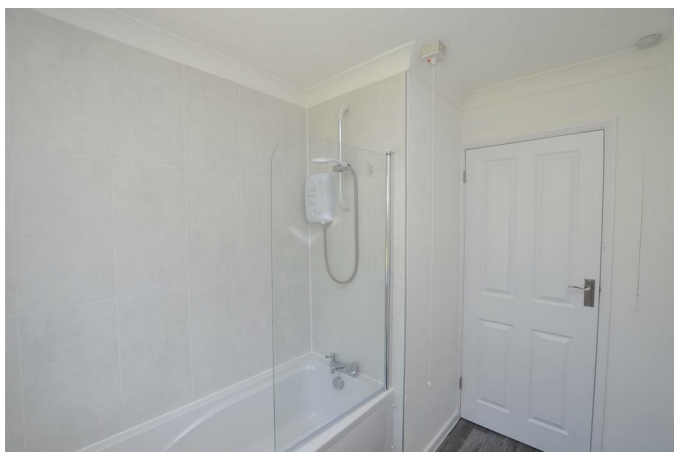
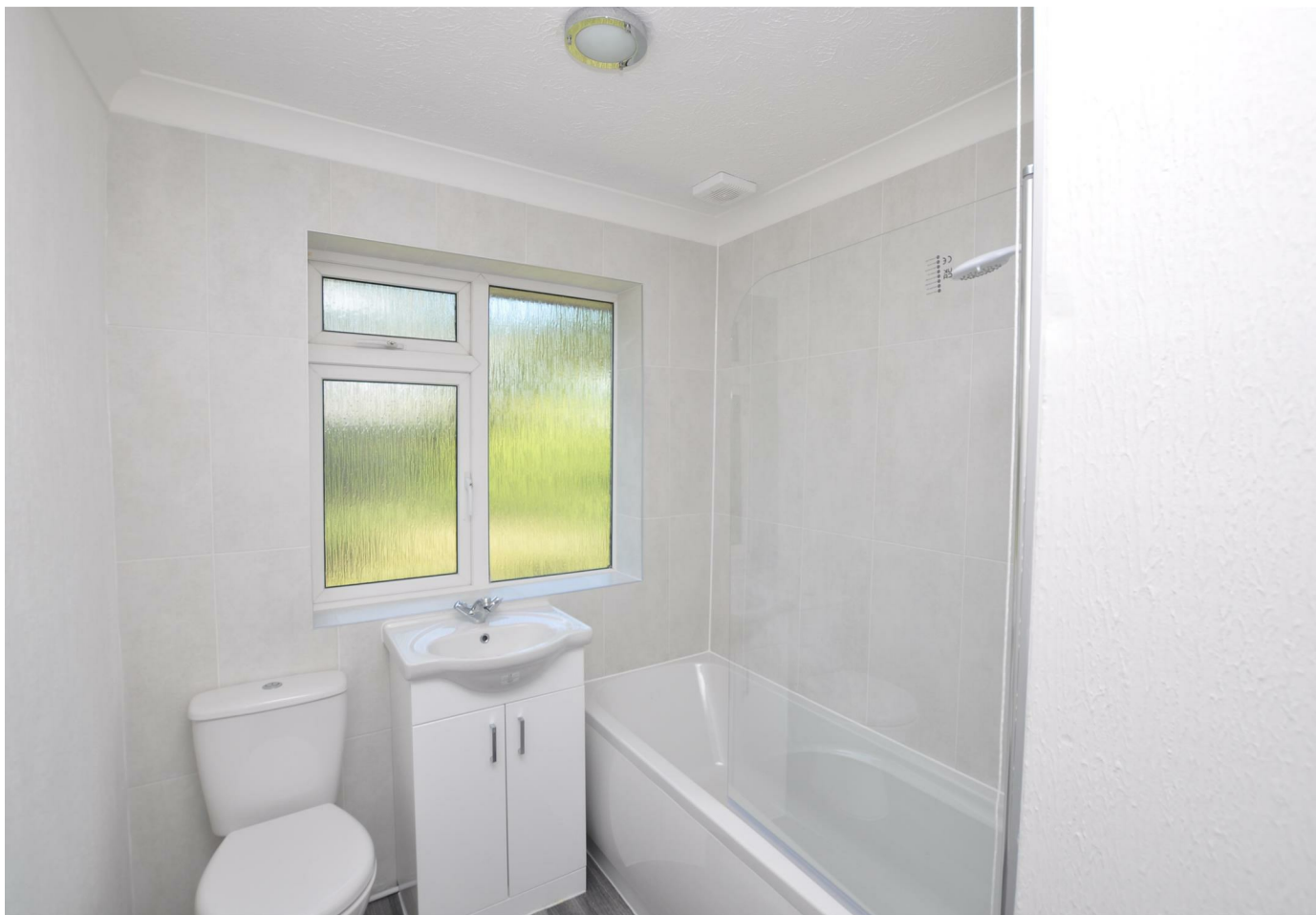
Seaside, Eastbourne

DESCRIPTION

A well presented, two bedroom, 1st floor apartment with a private entrance, conveniently located for local shopping and bus routes to the town centre,

The apartment comprises a spacious living dining room, a well-proportioned kitchen, two double bedrooms and bathroom.

Located in the St Anthony's area of Eastbourne and ideally placed for access to the shopping amenities of Lottbridge Drove and within walking distance of Eastbourne's seafront, Princes Park and Sovereign Park.



Seaside, Eastbourne

ENTRANCE HALL

LOUNGE/DINER 5.24m x 3.86m (17'2" x 12'7")

KITCHEN 2.86m x 2.73m (9'4" x 8'11")

BEDROOM ONE 3.27m x 3.74m (10'8" x 12'3")

BEDROOM TWO 3.85m x 3.02m (12'7" x 9'10")

BATHROOM 5.42m x 1.94m (17'9" x 6'4")

PRIVATE REAR GARDEN

