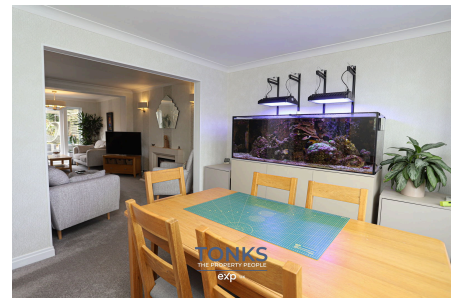


## Summerfields Avenue, Halesowen, B62 9NS

Offers In Region Of £425,000

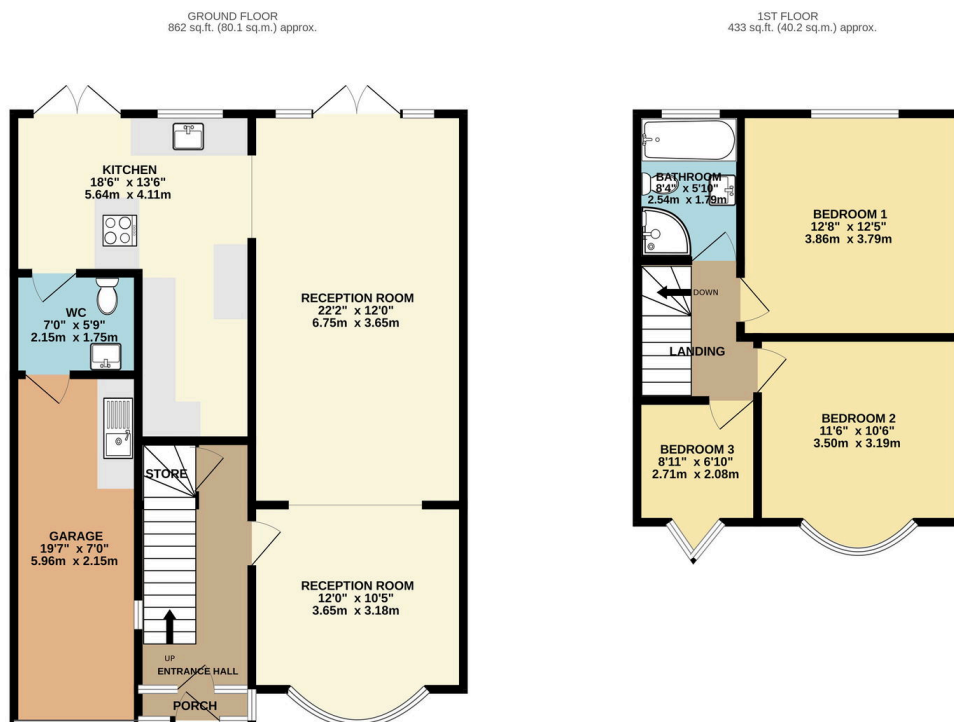
🛏 3 🚿 1 🛋 2



**Exceptional Detached Family Home** - This extended detached family home sits on the desirable Summerfields Avenue in the heart of Hurst Green.

## Key Features

- Refurbished to an exceptional standard
- Landscaped private rear garden
- Downstairs WC
- Large garage with utility area
- Stunning bay fronted traditional
- High end specification throughout
- Walking distance to Hurst Green & Halesbury SEN school
- Amazing extended breakfast kitchen
- Extended detached home



TOTAL FLOOR AREA: 1296 sq.ft. (120.4 sq.m.) approx.

Whilst every attempt has been made to ensure the accuracy of the floorplan contained here, measurements of doors, windows, rooms and any other items are approximate and no responsibility is taken for any error, omission or mis-statement. This plan is for illustrative purposes only and should be used as such by any prospective purchaser. The services, systems and appliances shown have not been tested and no guarantee is given as to their operability or efficiency can be given.

Made with Metropix ©2025