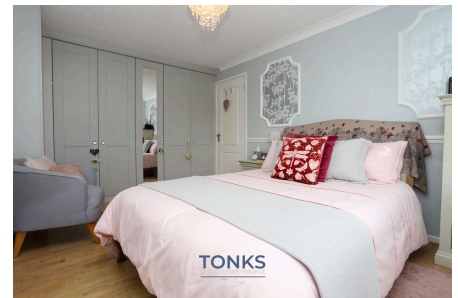


Chatsworth Road, Halesowen, B62 8TD

Offers Over £270,000

🛏 3 🚿 2 🛋 2

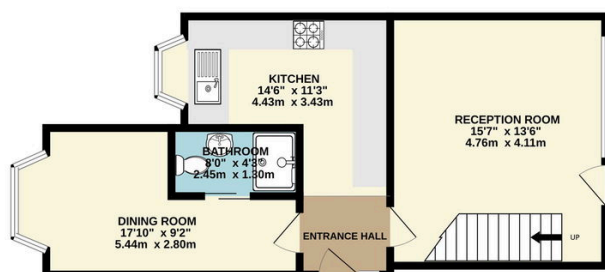


Desirable Lodgefield Estate - This generous three bedroom home is presented in an immaculate condition & boasts two bathrooms & two reception rooms!

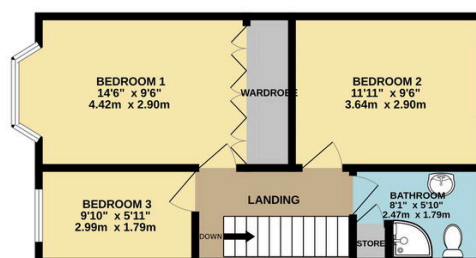
Key Features

- Highly desirable Lodgefield estate in Halesowen
- Beautiful landscaped rear garden
- Two bathrooms
- Immaculate condition throughout
- Three generous bedrooms
- Downstairs WC
- Off road parking
- Two reception rooms

GROUND FLOOR
514 sq.ft. (47.8 sq.m.) approx.



1ST FLOOR
435 sq.ft. (40.4 sq.m.) approx.



TOTAL FLOOR AREA : 950 sq.ft. (88.2 sq.m.) approx.

Whilst every attempt has been made to ensure the accuracy of the floorplan contained here, measurements of doors, windows, rooms and any other items are approximate and no responsibility is taken for any error, omission or mis-statement. This plan is for illustrative purposes only and should be used as such by any prospective purchaser. The services, systems and appliances shown have not been tested and no guarantee as to their operability or efficiency can be given.

Made with Metropix ©2024