

14 Maypole Close

Offers Over £220,000

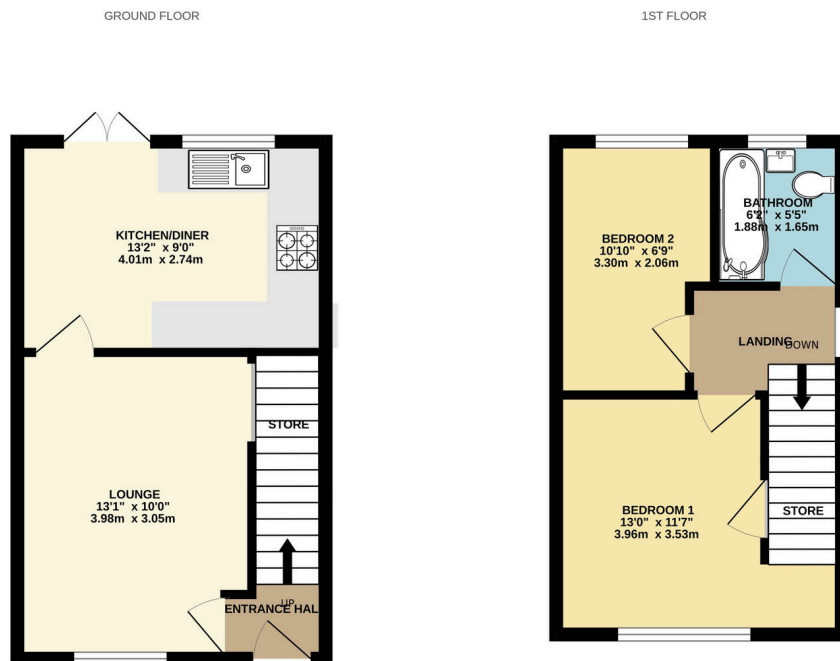
🛏️ 2 🚿 1 🚗 1



Please quote ref AT0132 A most immaculately presented home tucked away in a quiet cul de sac, perfect for first time buyers!

Key Features

- Immaculately presented, stylish interior
- Walking distance to Cradley Heath Train Station
- Perfect for first time buyers
- Beautiful modern kitchen & bathroom
- Very pleasant rear garden with private aspect
- Please quote ref AT0132
- Quiet cul de sac location
- Off road parking
- Two good sized bedrooms



MAYPOLE CLOSE, B64 5AS

Whilst every attempt has been made to ensure the accuracy of the floorplan contained here, measurements of doors, windows, rooms and any other items are approximate and no responsibility is taken for any error, omission or mis-statement. This plan is for illustrative purposes only and should be used as such by any prospective purchaser. The services, systems and appliances shown have not been tested and no guarantee as to their operability or efficiency can be given.
Made with Metropix ©2024