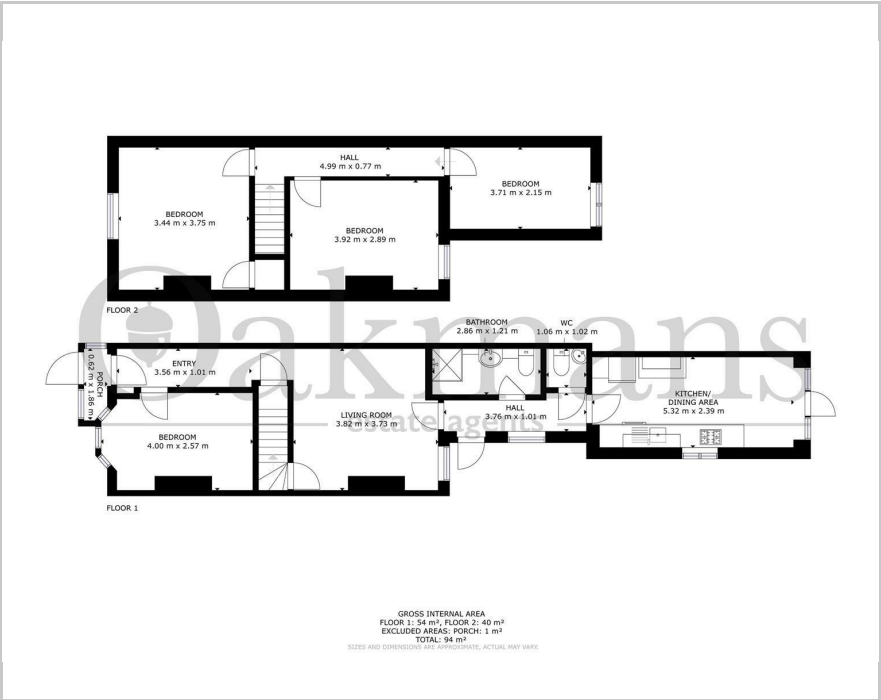


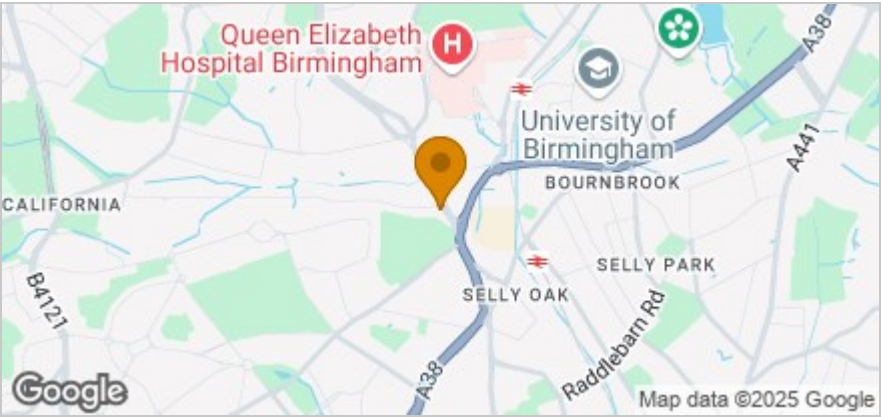


205 Harborne Lane, Birmingham, B29 6SS
£433

Floor Plan



Area Map



These particulars, whilst believed to be accurate are set out as a general outline only for guidance and do not constitute any part of an offer or contract. Intending purchasers should not rely on them as statements of representation of fact, but must satisfy themselves by inspection or otherwise as to their accuracy. No person in this firms employment has the authority to make or give any representation or warranty in respect of the property.

2 Katie Road, Birmingham, B29 6JG
Tel: 01212464010 Email: info@oakmans.co.uk www.oakmans.co.uk

Accommodation

- Available 1st July 2025
- £100 PPPW
- Sleeps 4 Students
- Great Location
- Close to University of Birmingham
- Call Oakmans Today



Viewing

Please contact our Oakman Students Office on 01212464010 if you wish to arrange a viewing appointment for this property or require further information.

Energy Efficiency Graph

