



Shoot Up Hill, NW2 3UQ
£1,850 Per Month

coopers
OF LONDON EST. 1986

Shoot Up Hill, NW2

- Available 27th June 2025
- Furnished
- 7th Floor Flat
- Plentiful Storage Space
- Secure Allocated Parking
- Concierge
- Residents Gym, Pool & Spa
- Excellent Transport Links

Coopers of London are delighted to present for let this spacious and modern 2 bedroom, 7th floor apartment located in a secure building with lift, concierge and allocated parking.

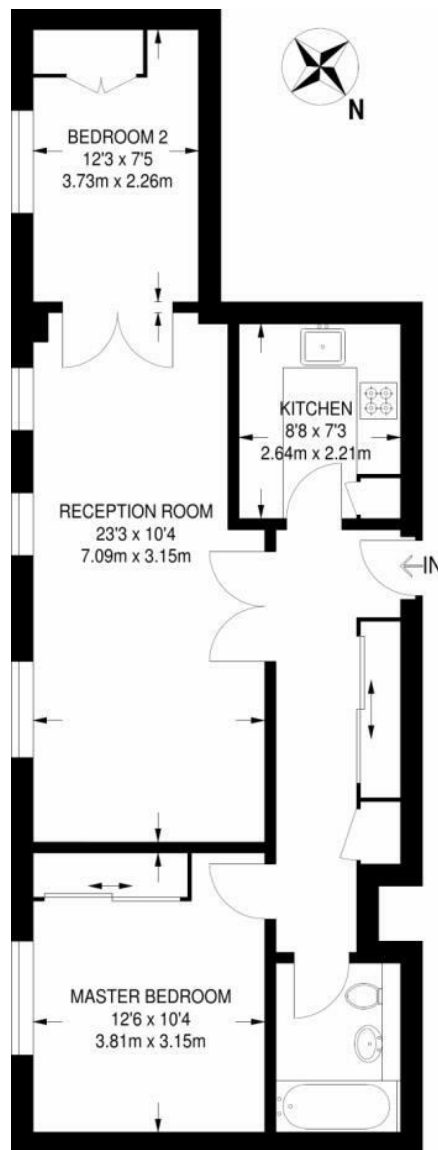
Residents benefit from the buildings concierge services and have exclusive use of the gym, pool & spa facilities.

Shoot Up Hill is a popular residential area moments from local amenities, the property also benefits from being close to the excellent range of shops, bars and restaurants of Hampstead and the open green spaces of Queen's Park.

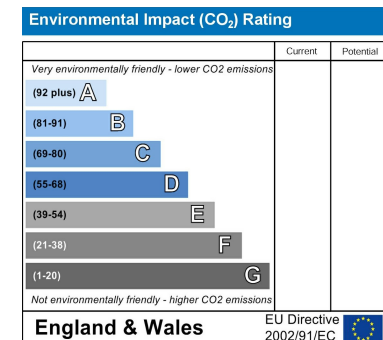
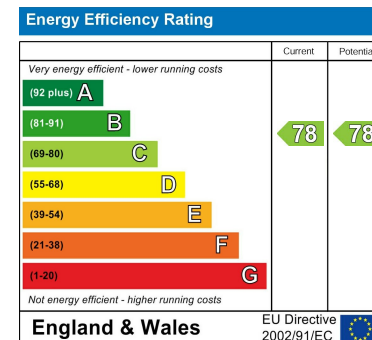
Perfectly located for transport links as it is only minutes away from Kilburn Station (Zone 2, Jubilee Line) & Brondesbury Overground Station.







SEVENTH FLOOR
682 SQ FT / 63.4 SQ M



Viewing

Strictly by appointment with:
Coopers of London , 22 Cleveland Street,
Fitzrovia, London W1T 4JB
info@coopersonlondon.co.uk

0207 580 9658

These particulars, whilst believed to be accurate are set out as a general outline only for guidance and do not constitute any part of an offer or contract. Intending purchasers should not rely on them as statements or representation of fact, but must satisfy themselves by inspection or otherwise as to their accuracy. No person in this firms employment has the authority to make or give any representation or warranty in respect of the property.