

High Timber Street

London • • EC4V 3PS

PCM: £2,100 PCM



coopers
est 1986

High Timber Street

London • • EC4V 3PS

A spacious one bedroom apartment situated in this private riverside block Globe View.

This apartment boasts a open plan reception/dining with river view, one bedrooms en-suite and a family bathroom.

Globe View is a spectacular former warehouse set on the river and enjoys the benefit of having been built around a tropical style atrium, providing a small oasis in the heart of the bustling City and a day time concierge. Transport connections are plenty with St Pauls, Mansion House, Cannon Street, Bank and Monument stations just a few minutes walk away.

Restaurants and bars of the South Bank are just moments from Globe View.

One bedroom apartment

River views

3rd floor

Wood flooring

Furnished

These particulars are intended as a guide and must not be relied upon as statements of fact. Your attention is drawn to the Important Notice on the last page.







Schools:

A one bedroom apartment with river views set in a converted Victorian Warehouse located close to St Paul's and the Millennium Bridge. Features



Train:



Car:

M4, A40, M25, M40

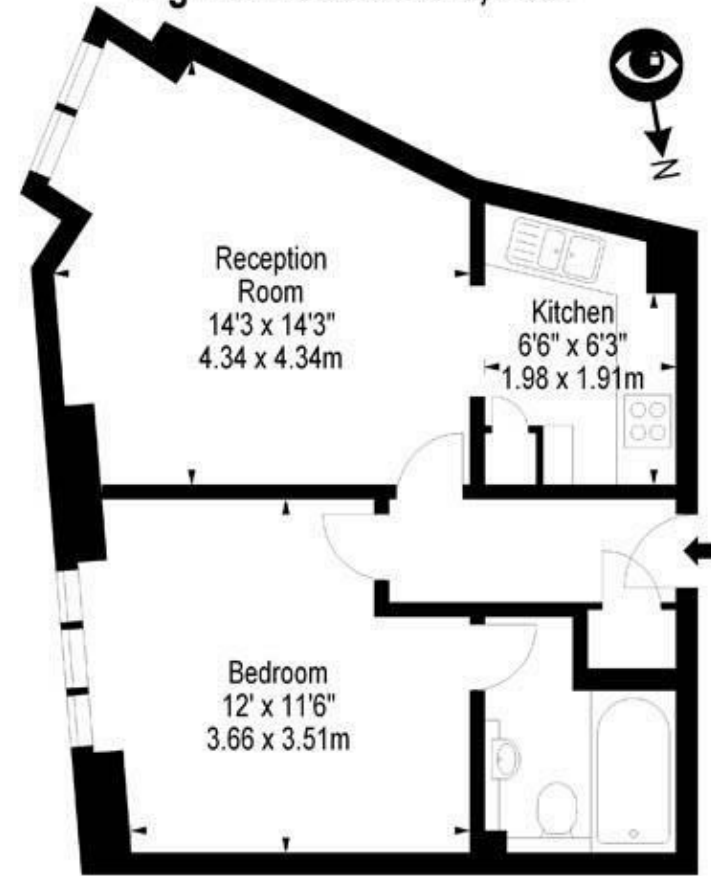


Council Tax Band:

(Distances are straight line measurements from centre of postcode)



Globe View, High Timbers Street, EC4



Third Floor

Approx Gross Internal Area **475 Sq Ft - 44.13 Sq M**

For Illustration Purposes Only - Not To Scale
Floor Plan from www.BigPropertyMarketing.com

0207 580 9658

22 Cleveland Street, Fitzrovia,
London, W1T 4JB

info@coopersonlondon.co.uk

CoopersResidential.co.uk

coopersonlondon
est 1986

Energy Efficiency Rating	
Current	Potential
Very energy efficient - lower running costs	
A	
B	
C	
D	
E	
F	
G	
Not energy efficient - higher running costs	
79	84
England & Wales	EU Directive 2002/91/EC

Important Notice: These particulars, whilst believed to be accurate are set out as a general outline only for guidance and do not constitute any part of an offer or contract. Intending purchasers should not rely on them as statements or representation of fact, but must satisfy themselves by inspection or otherwise has the authority to make or give any representation or warranty in respect of the property.