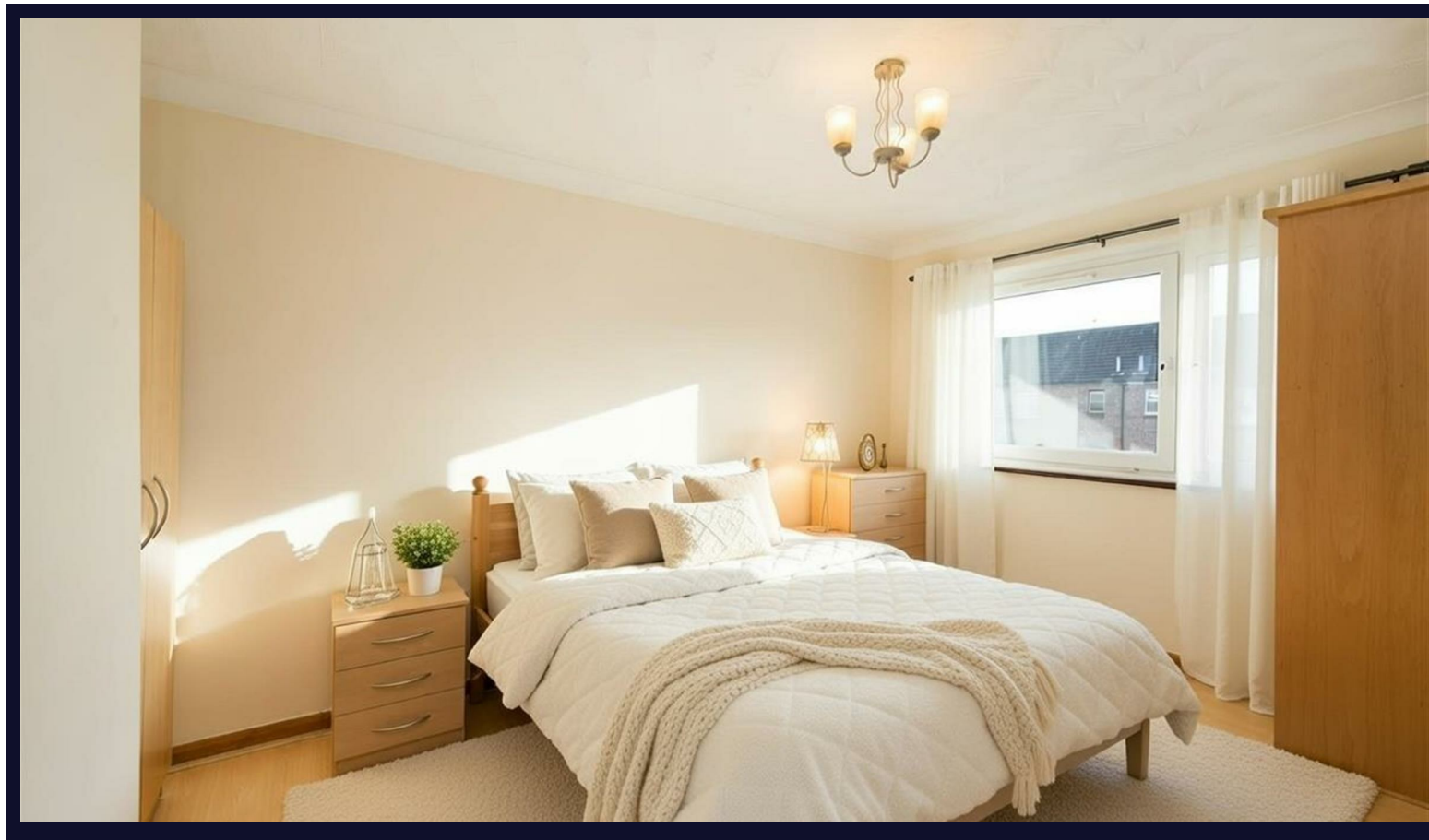


Panama House

London • • E1 4LZ
Per Month: £2,850 Per Month



coopers
est 1986

Panama House

London • • E1 4LZ

AVAILABLE END of JANUARY 2026.

This fresh modern and bright three bedroom first floor apartment with a private balcony in a well maintained block top close to Stepney Green.

The property comprises an entrance hall, with doors leading to, a large through lounge with a balcony and pleasant views, a bathroom and wc, and an inner hallway with doors leading to all three bedrooms, two large doubles, a large single bedroom.

The property benefits from double glazing, gas fired central heating, wood floors, and offers good storage.

Available 26th January 2026

Three Bed Apartment

Balcony

Wood flooring

Close to Stepney Green Station

These particulars are intended as a guide and must not be relied upon as statements of fact. Your attention is drawn to the Important Notice on the last page.







Schools:

AVAILABLE END of JANUARY 2026.
This fresh modern and bright three bedroom first floor apartment with a private



Train:



Car:

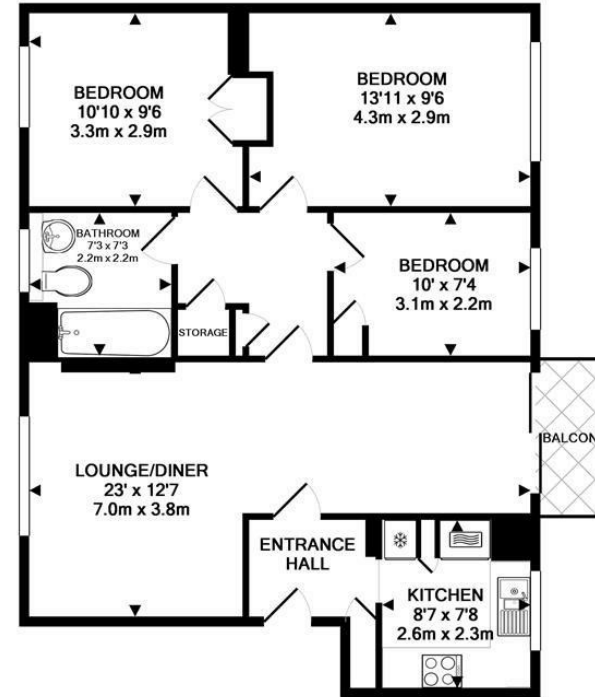
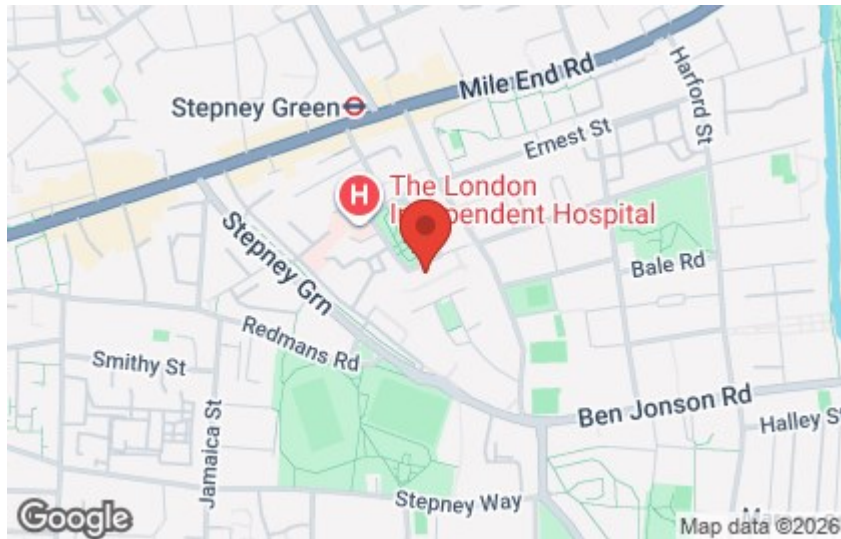
M4, A40, M25, M40



Council Tax Band:

C

(Distances are straight line measurements from centre of postcode)



1ST FLOOR

PANAMA HOUSE E1
TOTAL APPROX. FLOOR AREA 762 SQ.FT. (70.8 SQ.M.)
Measurements are approximate. Not to scale. Illustrative purposes only

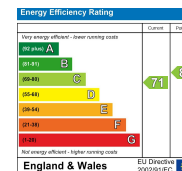
coopers
est 1986

0207 580 9658

22 Cleveland Street, Fitzrovia,
London, W1T 4JB

info@coopersonlondon.co.uk

CoopersResidential.co.uk



Important Notice: These particulars, whilst believed to be accurate are set out as a general outline only for guidance and do not constitute any part of an offer or contract. Intending purchasers should not rely on them as statements or representation of fact, but must satisfy themselves by inspection or otherwise has the authority to make or give any representation or warranty in respect of the property.