



Panama House, Beaumont Square, E1 4LZ
£2,850 Per Month

coopers
OF LONDON EST. 1986

Panama House, Beaumont Square, E1

- Available 26th January 2026
- Three Bed Apartment
- Balcony
- Wood flooring
- Close to Stepney Green Station

AVAILABLE END of JANUARY 2026.

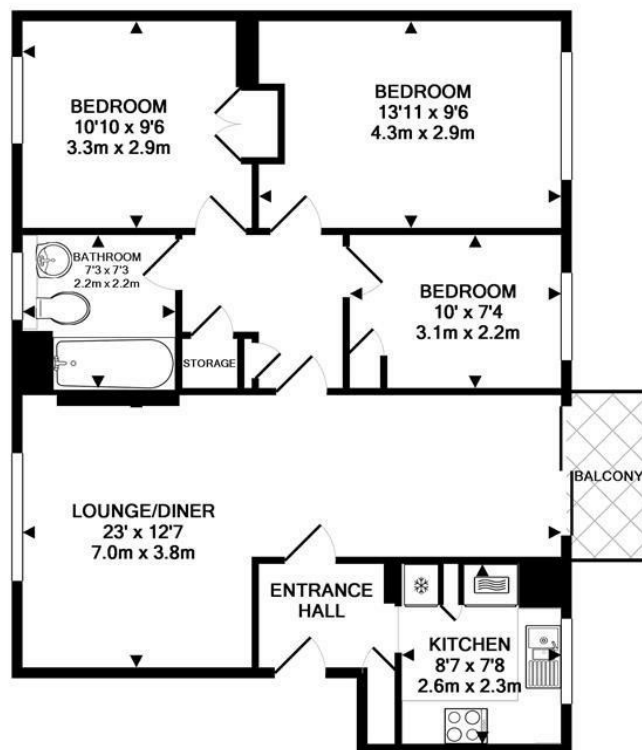
This fresh modern and bright three bedroom first floor apartment with a private balcony in a well maintained block top close to Stepney Green.

The property comprises an entrance hall, with doors leading to, a large through lounge with a balcony and pleasant views, a bathroom and wc, and an inner hallway with doors leading to all three bedrooms, two large doubles, a large single bedroom.

The property benefits from double glazing, gas fired central heating, wood floors, and offers good storage.







PANAMA HOUSE E1
TOTAL APPROX. FLOOR AREA 762 SQ.FT. (70.8 SQ.M.)
Measurements are approximate. Not to scale. Illustrative purposes only

Energy Efficiency Rating		
	Current	Potential
Very energy efficient - lower running costs		
(92 plus) A		
(81-91) B		
(69-80) C		
(55-68) D		
(39-54) E		
(21-38) F		
(1-20) G		
Not energy efficient - higher running costs		
	71	80
EU Directive 2002/91/EC		
England & Wales		

Environmental Impact (CO ₂) Rating		
	Current	Potential
Very environmentally friendly - lower CO ₂ emissions		
(92 plus) A		
(81-91) B		
(69-80) C		
(55-68) D		
(39-54) E		
(21-38) F		
(1-20) G		
Not environmentally friendly - higher CO ₂ emissions		
EU Directive 2002/91/EC		
England & Wales		

Viewing

Strictly by appointment with:
Coopers of London , 22 Cleveland Street,
Fitzrovia, London W1T 4JB
info@coopersonlondon.co.uk

0207 580 9658

These particulars, whilst believed to be accurate are set out as a general outline only for guidance and do not constitute any part of an offer or contract. Intending purchasers should not rely on them as statements or representation of fact, but must satisfy themselves by inspection or otherwise as to their accuracy. No person in this firms employment has the authority to make or give any representation or warranty in respect of the property.