



Station Approach, UB3 4FD
£1,650 Per Month

coopers
OF LONDON EST. 1986

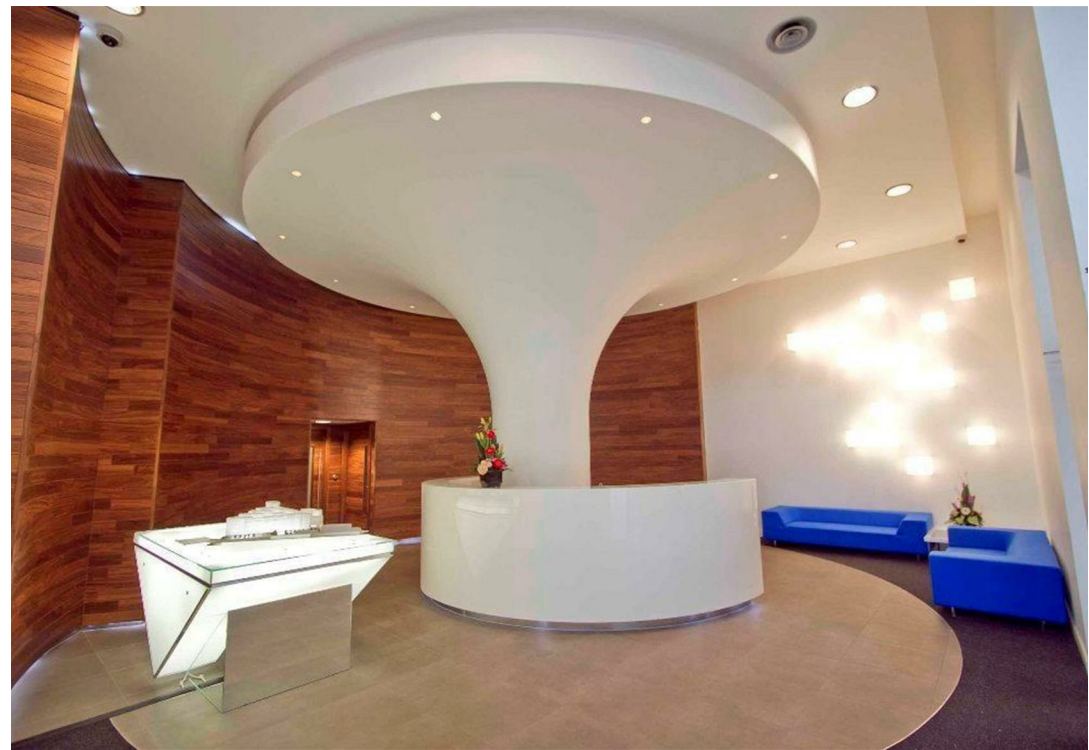
Station Approach, UB3

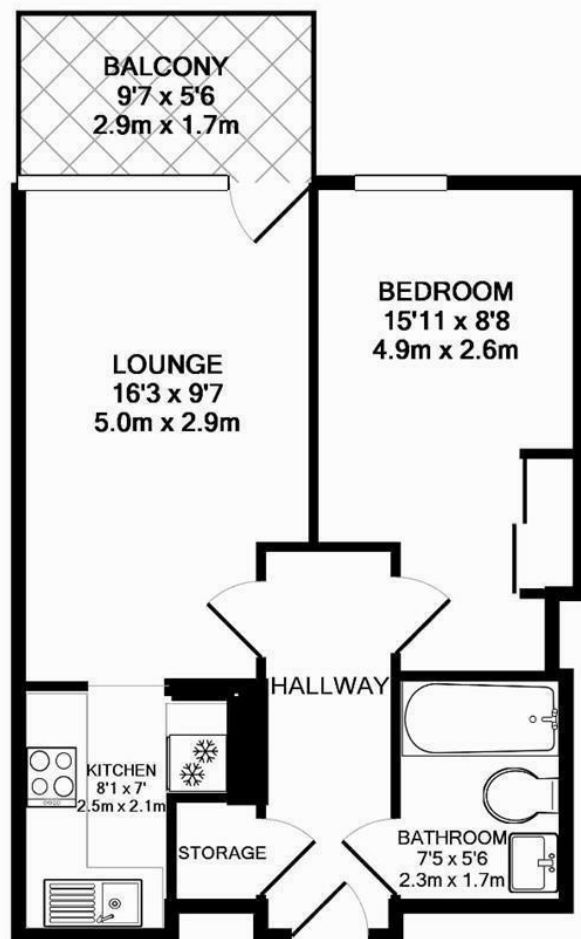
- Allocated parking
- Concierge
- Great transport links
- Local amenities
- Gymnasium
- Swimming pool
- Private balcony
- Close to Stockley Park
- Nearby to Heathrow Airport
- Fully fitted kitchen

LUXURY ONE BEDROOM APARTMENT situated in a prime location for those who commute. Heathrow and central London are just moments away. Finished to a high specification throughout and just a stone`s throw from Hayes & Harlington train station. Shopping facilities, bars and restaurants on your doorstep. Views overlooking the Grand Union Canal. Concierge, gymnasium, swimming pool and allocated parking. Additional facilities - coffee Shop, pharmacy, Tesco, Health Spar, **FURNISHED**

LUXURY ONE BEDROOM APARTMENT situated in a prime location for those who commute. Heathrow and central London are just moments away. Finished to a high specification throughout and just a stone`s throw from Hayes & Harlington train station. Shopping facilities, bars and restaurants on your doorstep. Views overlooking the Grand Union Canal. Concierge, gymnasium, swimming pool and allocated parking. Additional facilities - coffee Shop, pharmacy, Tesco, Health Spar, **FURNISHED**

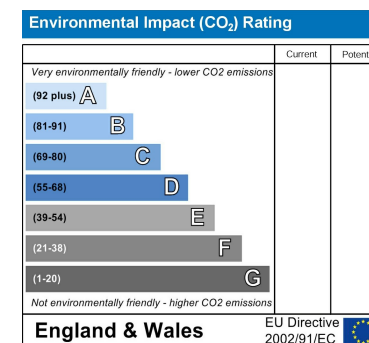
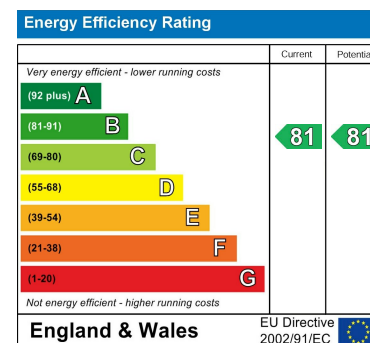






TOTAL APPROX. FLOOR AREA 424 SQ.FT. (39.4 SQ.M.)

Whilst every attempt has been made to ensure the accuracy of the floor plan contained here, measurements of doors, windows, rooms and any other items are approximate and no responsibility is taken for any error, omission, or mis-statement. This plan is for illustrative purposes only and should be used as such by any prospective purchaser. The services, systems and appliances shown have not been tested and no guarantee as to their operability or efficiency can be given
Made with Metropix ©2015



Viewing

Strictly by appointment with:
Coopers of London , 22 Cleveland Street,
Fitzrovia, London W1T 4JB
info@coopersonlondon.co.uk

0207 580 9658

These particulars, whilst believed to be accurate are set out as a general outline only for guidance and do not constitute any part of an offer or contract. Intending purchasers should not rely on them as statements or representation of fact, but must satisfy themselves by inspection or otherwise as to their accuracy. No person in this firms employment has the authority to make or give any representation or warranty in respect of the property.