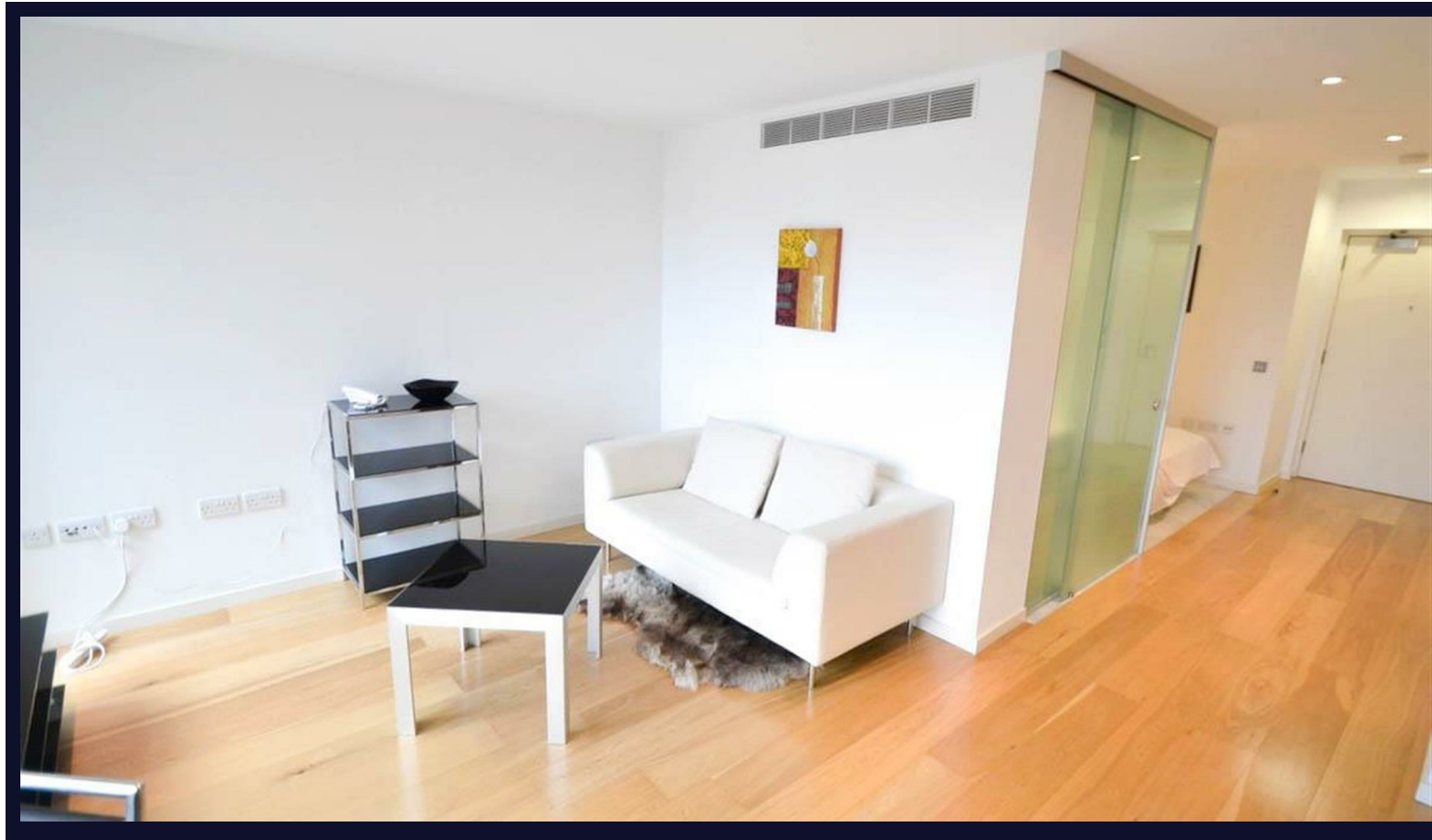


Ontario Tower

New Providence Wharf • London • E14 9JA

Per Month: £1,750 Per Month



coopers
est 1986

Ontario Tower

New Providence Wharf • London • E14 9JA

Excellent studio-suite located on the 5th floor in popular Ontario tower, walking distance to Canary Wharf.

Finished to a high standard, this modern property comprises high quality fitted kitchen, modern bathroom, separated sleeping area and reception area with floor to ceiling windows.

A short walk from Blackwall DLR station, Ontario Tower benefits from 24hr concierge and tenants are free to use the leisure facilities of neighbouring Radisson hotel (swimming pool, gym etc.).

Available 28th July 2023

[Furnished](#)

[5th Floor Flat](#)

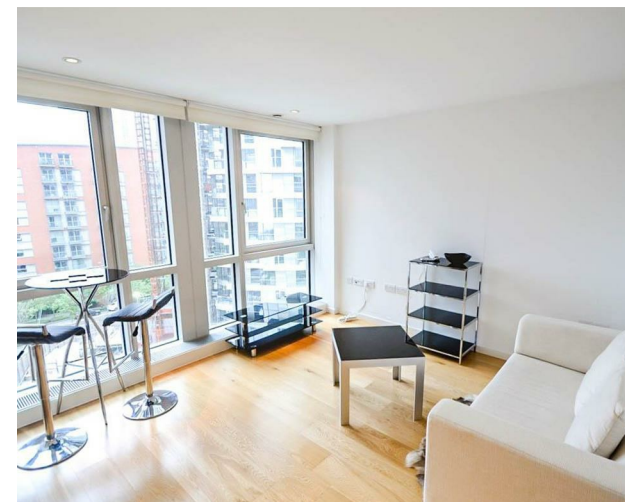
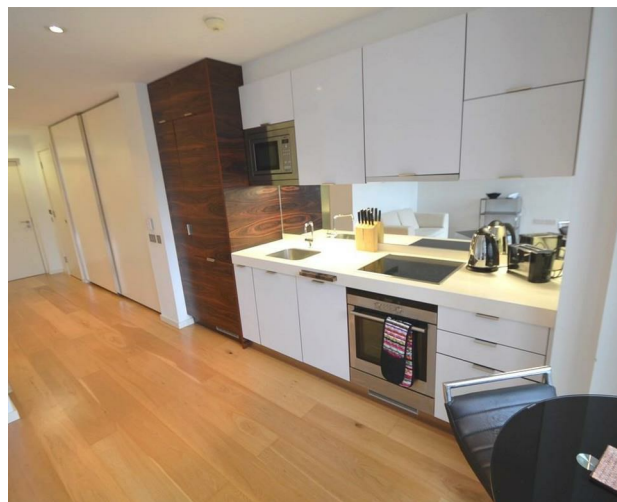
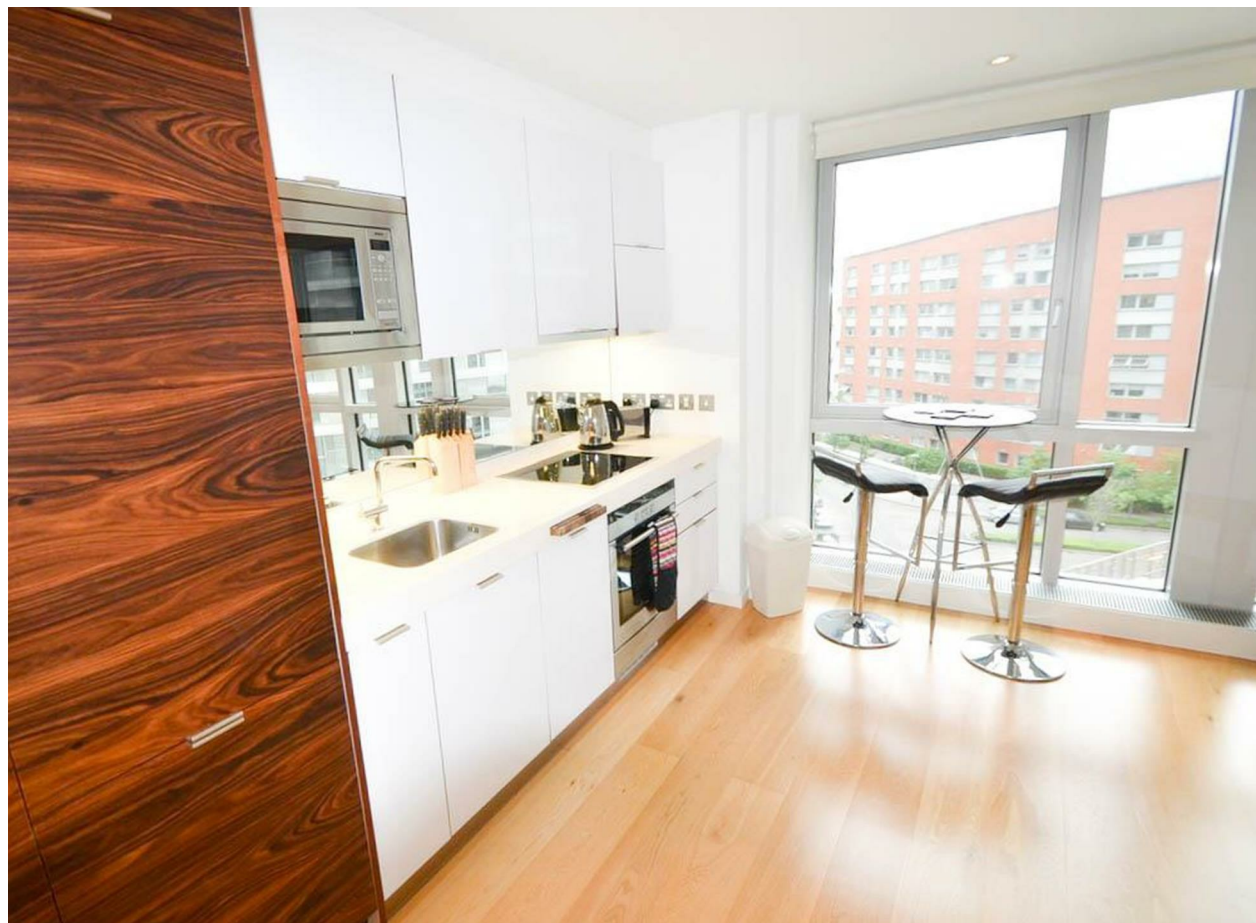
[Concierge](#)

[Resident's Gym & Pool](#)

[Excellent Transport Links](#)

[Video Tour](#)

These particulars are intended as a guide and must not be relied upon as statements of fact. Your attention is drawn to the Important Notice on the last page.







Schools:

Excellent studio-suite located on the 5th floor in popular Ontario tower, walking distance to Canary Wharf.



Train:



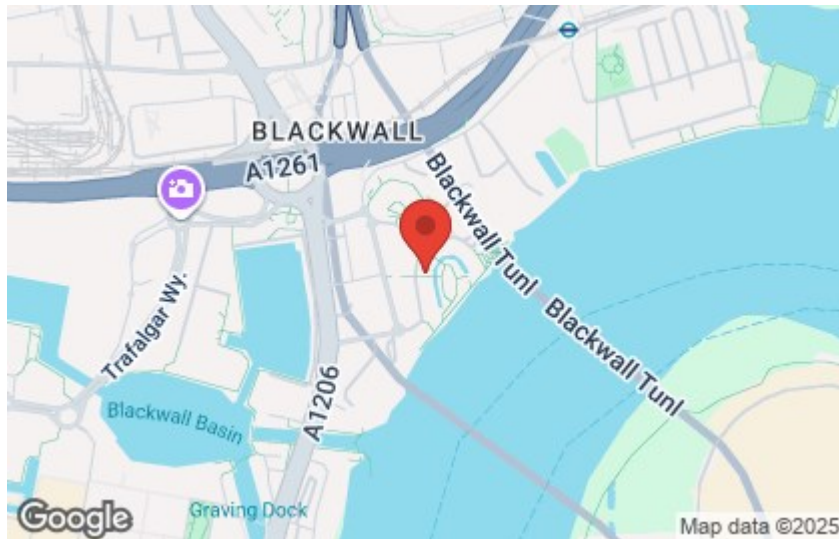
Car:

M4, A40, M25, M40



Council Tax Band:

(Distances are straight line measurements from centre of postcode)



coopers
est 1986

0207 580 9658

**22 Cleveland Street, Fitzrovia,
London, W1T 4JB**

info@coopersonlondon.co.uk

CoopersResidential.co.uk

Energy Efficiency Rating		
	Current	Potential
Very energy efficient - lower running costs		
Low energy A		
B		
C		
D		
E		
F		
G		
Not energy efficient - higher running costs		
England & Wales		
EU Directive 2002/91/EC		

Important Notice: These particulars, whilst believed to be accurate are set out as a general outline only for guidance and do not constitute any part of an offer or contract. Intending purchasers should not rely on them as statements or representation of fact, but must satisfy themselves by inspection or otherwise has the authority to make or give any representation or warranty in respect of the property.