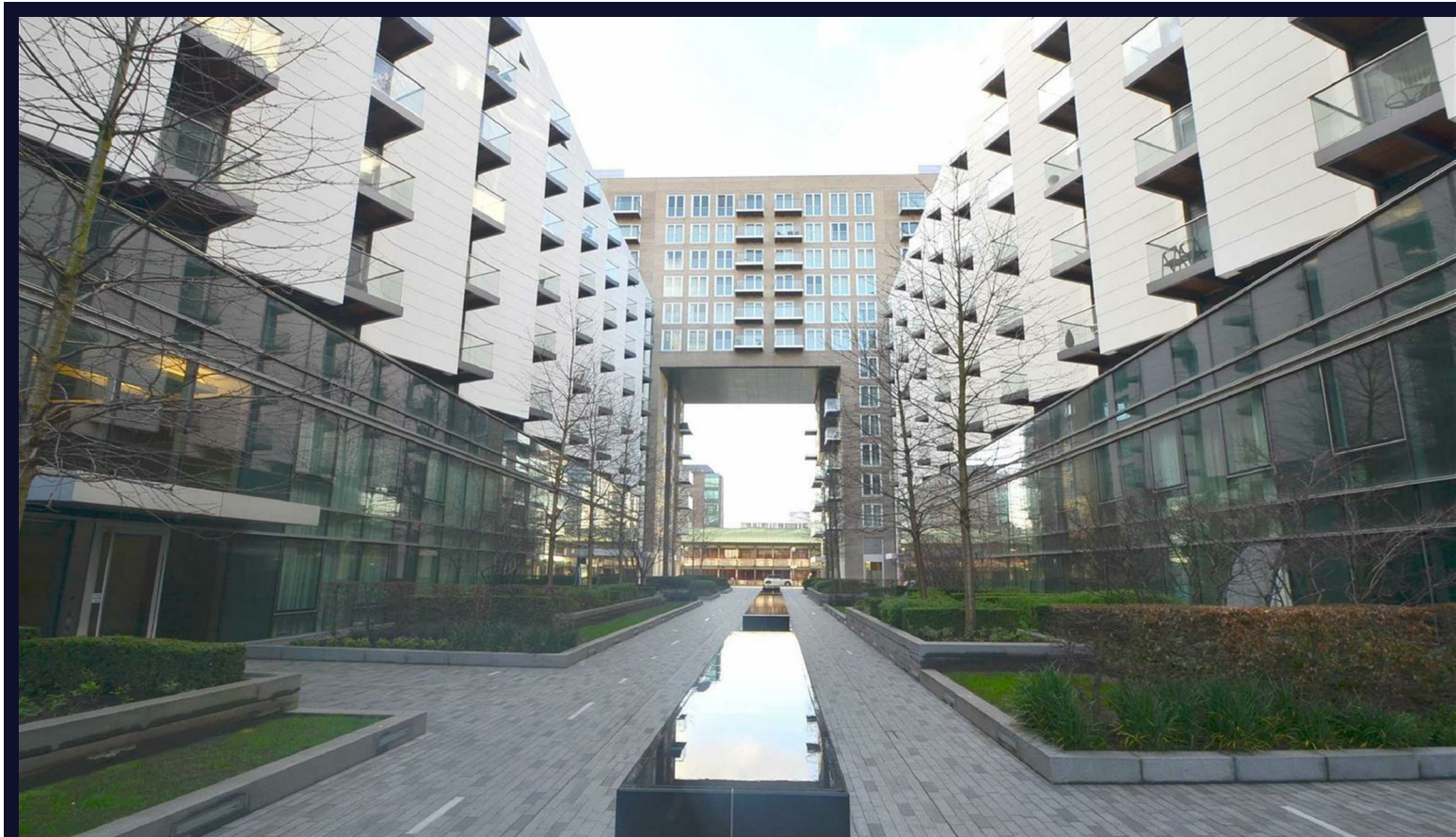


Baltimore Wharf

London • • E14 9EQ
Per Month: £1,800 Per Month



coopers
est 1986

Baltimore Wharf

London • • E14 9EQ

Slick studio-suite available to let in Canary Wharf's luxury development - Baltimore Wharf.

The well designed apartment features floor to ceiling windows, fold-out double bed, heated wood flooring, high quality furnishings, luxury kitchen, shower room and balcony.

This stunning development has a 24hr concierge and gymnasium.

Adjacent to Crossharbour DLR and 5 minutes walk to Canary Wharf Jubilee Line station.

AVAILABLE 17TH JULY

Bright studio apartment

24 hour concierge

Communal leisure facilities

Separate Sleeping area

Private balcony

Stylish interior

Next to Crossharbour DLR

Near Canary Wharf

These particulars are intended as a guide and must not be relied upon as statements of fact. Your attention is drawn to the Important Notice on the last page.







Schools:

Slick studio-suite available to let in Canary Wharf's luxury development - Baltimore Wharf.



Train:

Slick studio-suite available to let in Canary Wharf's luxury development - Baltimore Wharf.



Car:

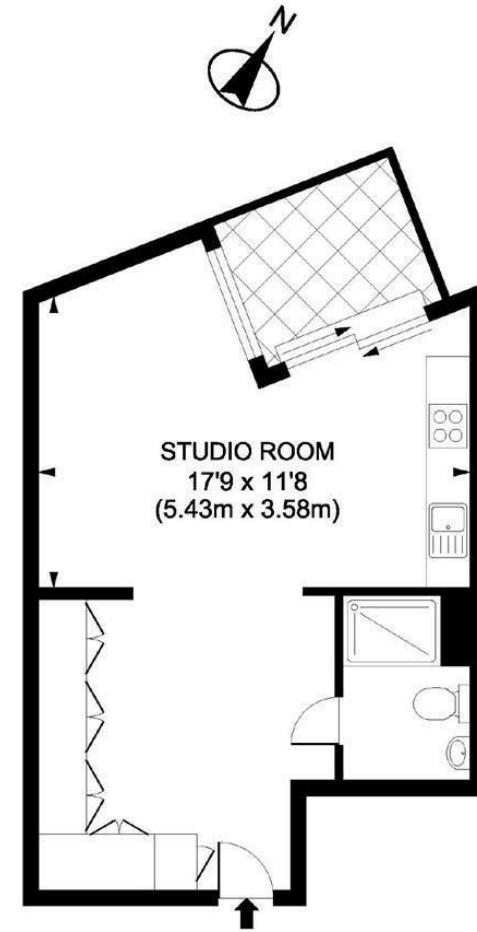
M4, A40, M25, M40



Council Tax Band:

D

(Distances are straight line measurements from centre of postcode)



SEVENTH FLOOR

Baltimore Wharf, London, E14 9FG
Gross internal area 387 sq ft/36 sq metres

Whilst every attempt has been made to ensure the accuracy of the floorplan shown, all measurements, positioning fixtures, fittings and any other data shown are an approximate interpretation for illustrative purposes only and are not to scale. No responsibility is taken for any error, omission, mis-statement or use of data shown.

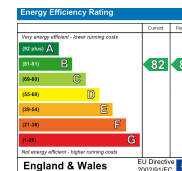
coopers
est 1986

0207 580 9658

22 Cleveland Street, Fitzrovia,
London, W1T 4JB

info@coopersonlondon.co.uk

CoopersResidential.co.uk



Important Notice: These particulars, whilst believed to be accurate are set out as a general outline only for guidance and do not constitute any part of an offer or contract. Intending purchasers should not rely on them as statements or representation of fact, but must satisfy themselves by inspection or otherwise has the authority to make or give any representation or warranty in respect of the property.