



Pont Street, SW1X 0AE
£3,400 PCM

coopers
OF LONDON EST. 1986

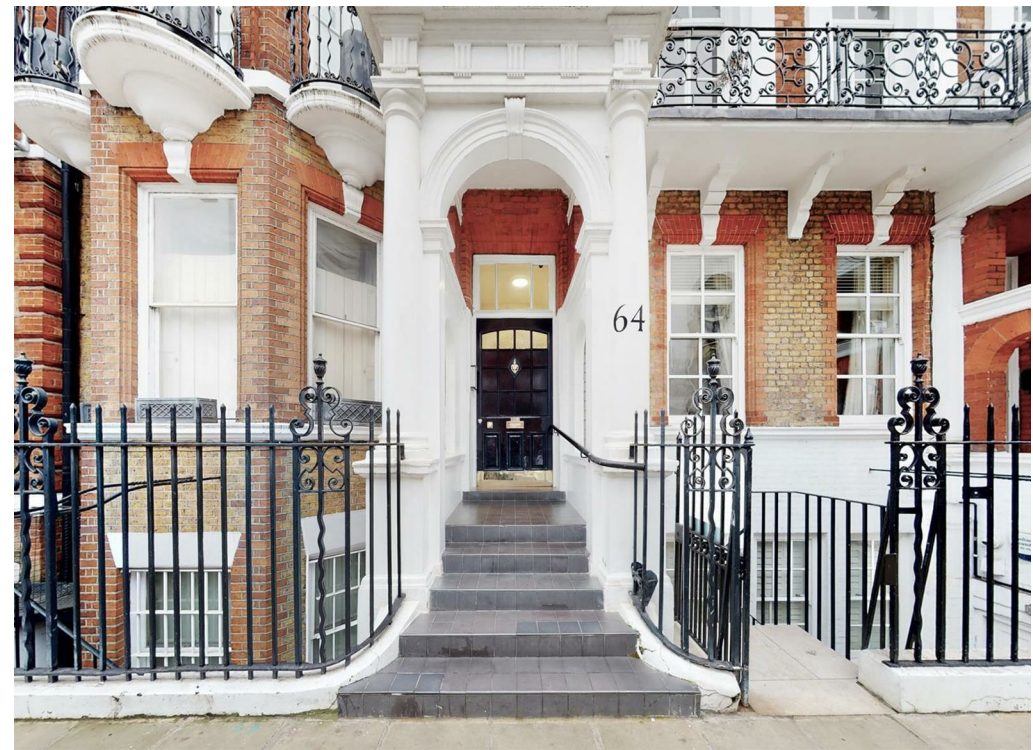
Pont Street, SW1X

- Available Early June
- 3rd Floor Apartment
- Lift Access
- Close to Transport Links
- Fully Furnished

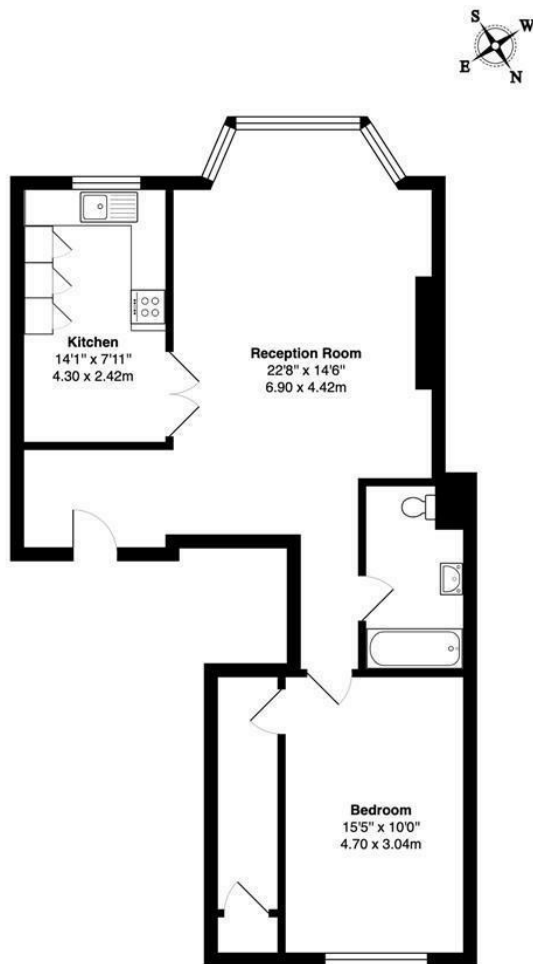
Coopers of London are delighted to present this very spacious modern one bedroom apartment in the heart of Knightsbridge.

The apartment comes furnished, with fully equipped separate kitchen, bathroom, large double bedroom. With tall ceilings throughout, the bedroom also boasts a spacious walk-in wardrobe area.

Located just moments from Harrods and the many fantastic cafes, bars and restaurants with Hyde Park being walking distance.







Pont Street London, SW1X

Total Gross Area: 767 ft² ... 71.3 m²

All measurements are approximate and for identification guideline purposes only, not to scale.
Compliant with the RICS code of measuring practice

Energy Efficiency Rating		
	Current	Potential
Very energy efficient - lower running costs		
(92 plus) A		
(81-91) B		
(69-80) C		
(55-68) D		
(39-54) E		
(21-38) F		
(1-20) G		
Not energy efficient - higher running costs		
England & Wales	EU Directive 2002/91/EC	

Environmental Impact (CO ₂) Rating		
	Current	Potential
Very environmentally friendly - lower CO ₂ emissions		
(92 plus) A		
(81-91) B		
(69-80) C		
(55-68) D		
(39-54) E		
(21-38) F		
(1-20) G		
Not environmentally friendly - higher CO ₂ emissions		
England & Wales	EU Directive 2002/91/EC	

Viewing

Strictly by appointment with:
Coopers of London , 22 Cleveland Street,
Fitzrovia, London W1T 4JB
info@coopersonlondon.co.uk

0207 580 9658

These particulars, whilst believed to be accurate are set out as a general outline only for guidance and do not constitute any part of an offer or contract. Intending purchasers should not rely on them as statements or representation of fact, but must satisfy themselves by inspection or otherwise as to their accuracy. No person in this firms employment has the authority to make or give any representation or warranty in respect of the property.