



Cadmus Court, Seafarer Way, SE16 7DW  
£2,250

coop  
OF LONDON EST. 1986



# Cadmus Court, Seafarer Way, SE16

- AVAILABLE NOW
- TWO BED TWO BATHROOMS
- BALCONY
- 24 HOUR CONCIERGE
- 24 HOUR GYM ACCESS
- SURREYS QUAYS STATION SHORT WALK AWAY

**\*Two bedrooms and Two bathrooms\*** This modern apartment set in Marine Wharf, in a Surrey Quays development.

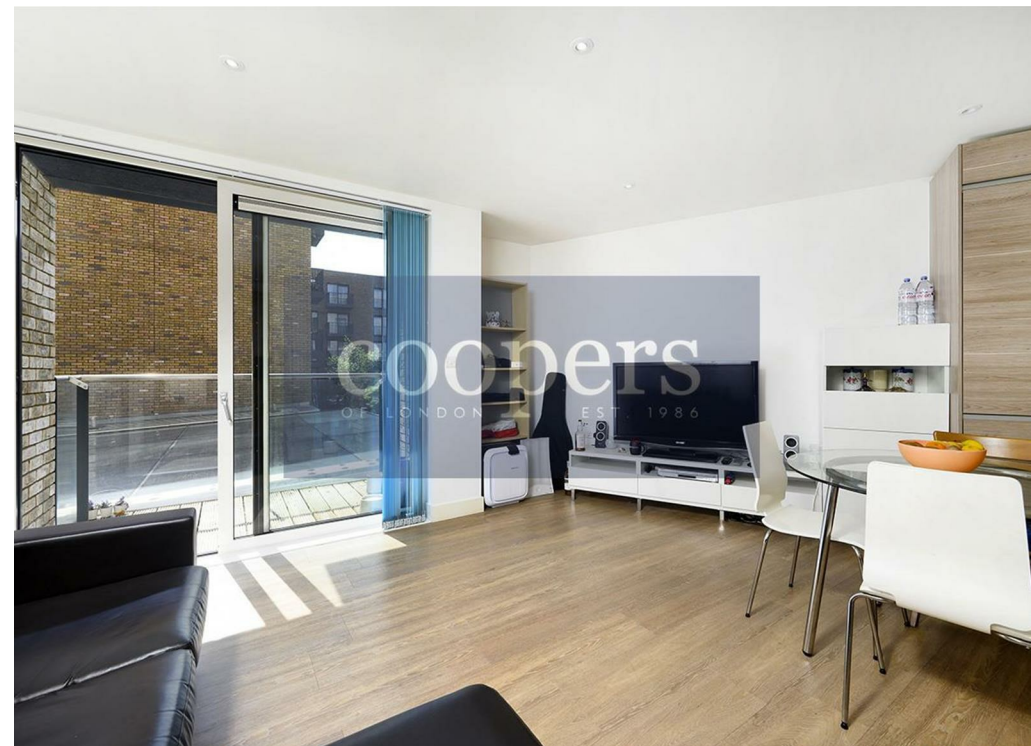
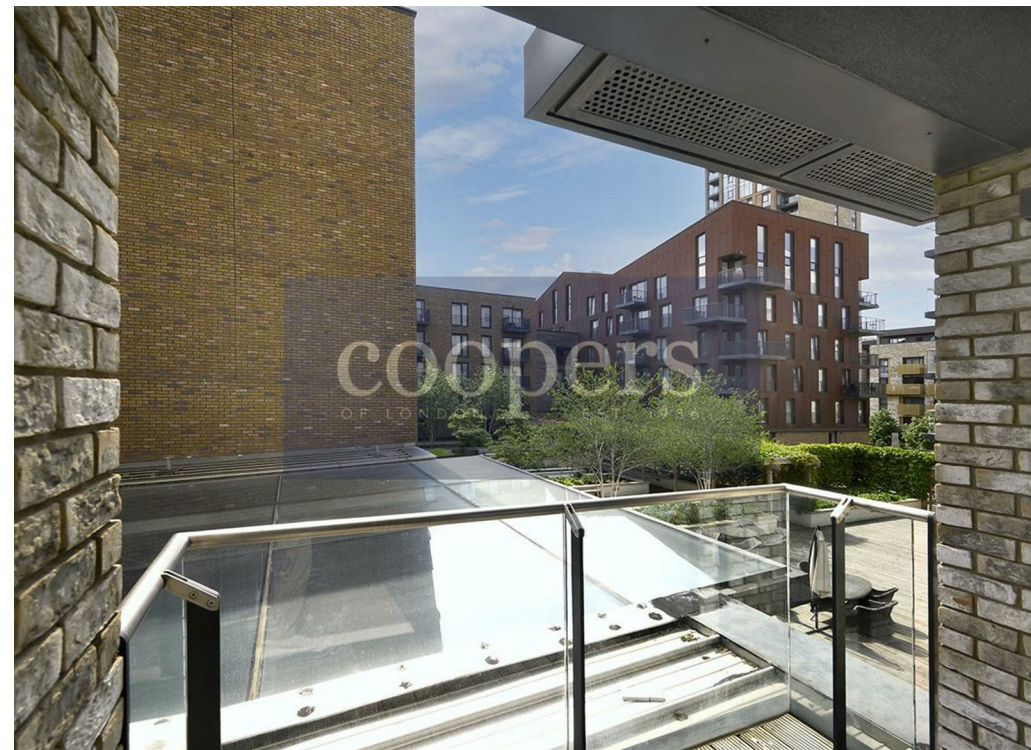
The stylish apartment comprises a bright and modern reception/dining area, linked to a fully integrated fitted kitchen.

Plenty of natural light enters the property through the floor-to-ceiling windows that lead to a private balcony.

There are two good size double bedrooms with a floor to ceiling fitted wardrobe in the main bedroom and a modern bathroom.

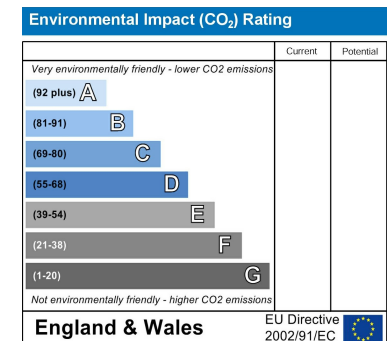
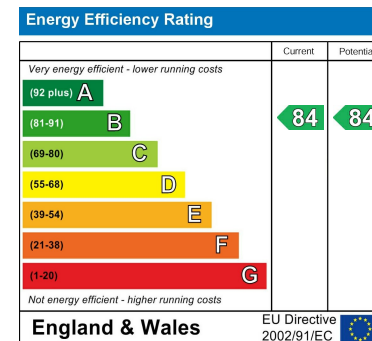
The property in Cadmus Court is offered on a furnished basis and has been decorated in neutral tones.

Residents of Marine Wharf benefit from a 24-hour concierge, residents' gym, landscaped communal water gardens and onsite local shops and restaurants.









## Viewing

Strictly by appointment with:  
Coopers of London , 22 Cleveland Street,  
Fitzrovia, London W1T 4JB  
[info@coopersoflondon.co.uk](mailto:info@coopersoflondon.co.uk)

**0207 580 9658**

These particulars, whilst believed to be accurate are set out as a general outline only for guidance and do not constitute any part of an offer or contract. Intending purchasers should not rely on them as statements or representation of fact, but must satisfy themselves by inspection or otherwise as to their accuracy. No person in this firms employment has the authority to make or give any representation or warranty in respect of the property.