



Brook House, 3 Fletcher Street, E1 8GN
£2,600 PCM

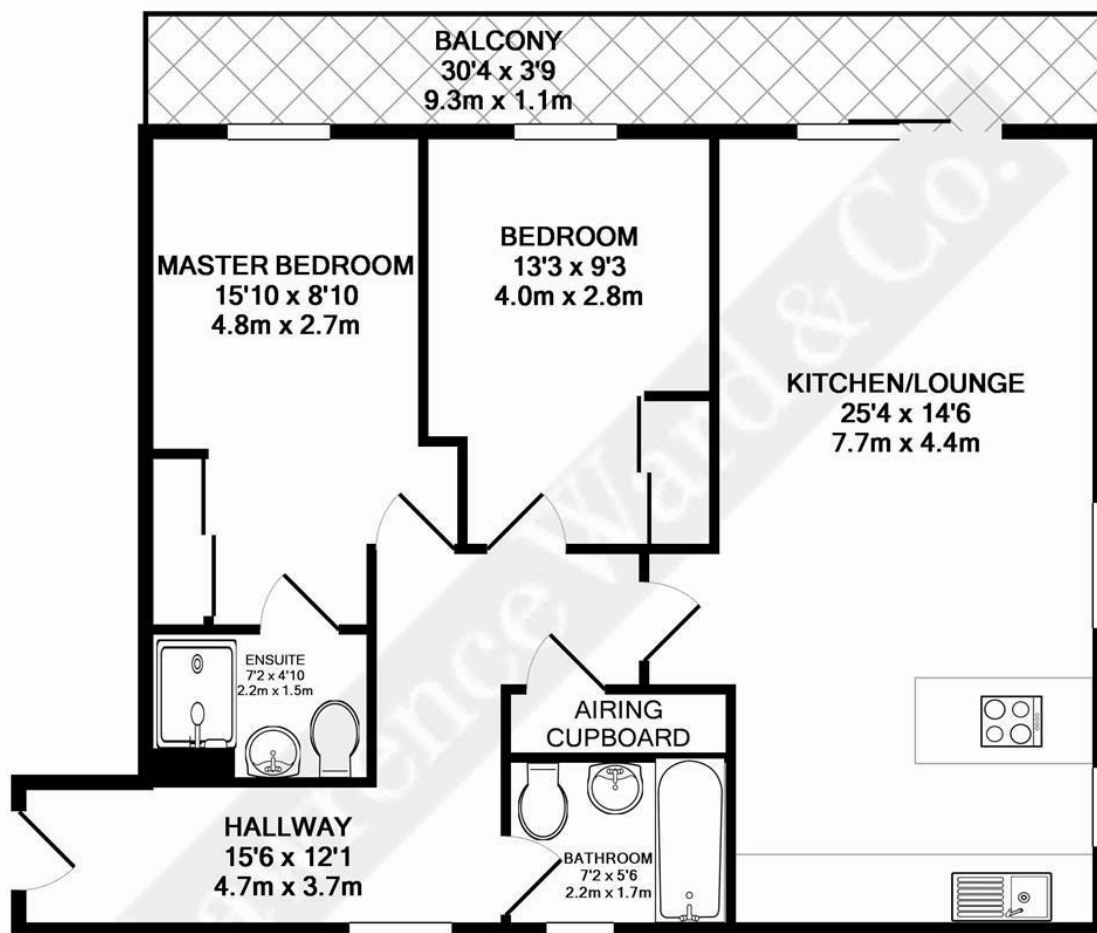
Brook House, 3 Fletcher Street, E1

- Two bedroom apartment
- Large terrace
- Open plan kitchen
- Close to the City

A large two bed, two bath apartment set in a modern development located within easy reach of The City. Features include a living room with wood flooring, a large balcony and a well equipped open plan kitchen. This apartment is conveniently located for access to Tower Hill, Tower Gateway and Aldgate East stations (all approx. 1/2 mile away). Offered furnished.



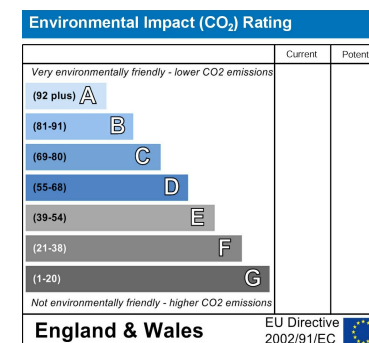
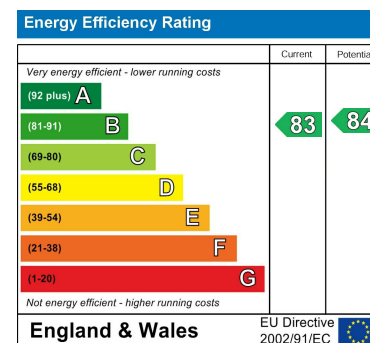




TOTAL APPROX. FLOOR AREA 786 SQ.FT. (73.0 SQ.M.)

Whilst every attempt has been made to ensure the accuracy of the floor plan contained here, measurements of doors, windows, rooms and any other items are approximate and no responsibility is taken for any error, omission, or mis-statement. This plan is for illustrative purposes only and should be used as such by any prospective purchaser. The services, systems and appliances shown have not been tested and no guarantee as to their operability or efficiency can be given

Made with Metropix ©2011



Viewing

Strictly by appointment with:
Coopers of London , 22 Cleveland Street,
Fitzrovia, London W1T 4JB
info@coopersonlondon.co.uk

0207 580 9658

These particulars, whilst believed to be accurate are set out as a general outline only for guidance and do not constitute any part of an offer or contract. Intending purchasers should not rely on them as statements or representation of fact, but must satisfy themselves by inspection or otherwise as to their accuracy. No person in this firms employment has the authority to make or give any representation or warranty in respect of the property.