



Commercial Road, E1 1LN  
£2,400 Per Month

coopers  
OF LONDON EST. 1986



# Commercial Road, E1

- Available 5th June 2025
- Two bed apartment
- Top floor
- Terrace
- Large living room
- Wood flooring

Spacious two Bedroom apartment arranged over the top floor of a period building located close to Aldgate East station and the local eateries on Leman Street.

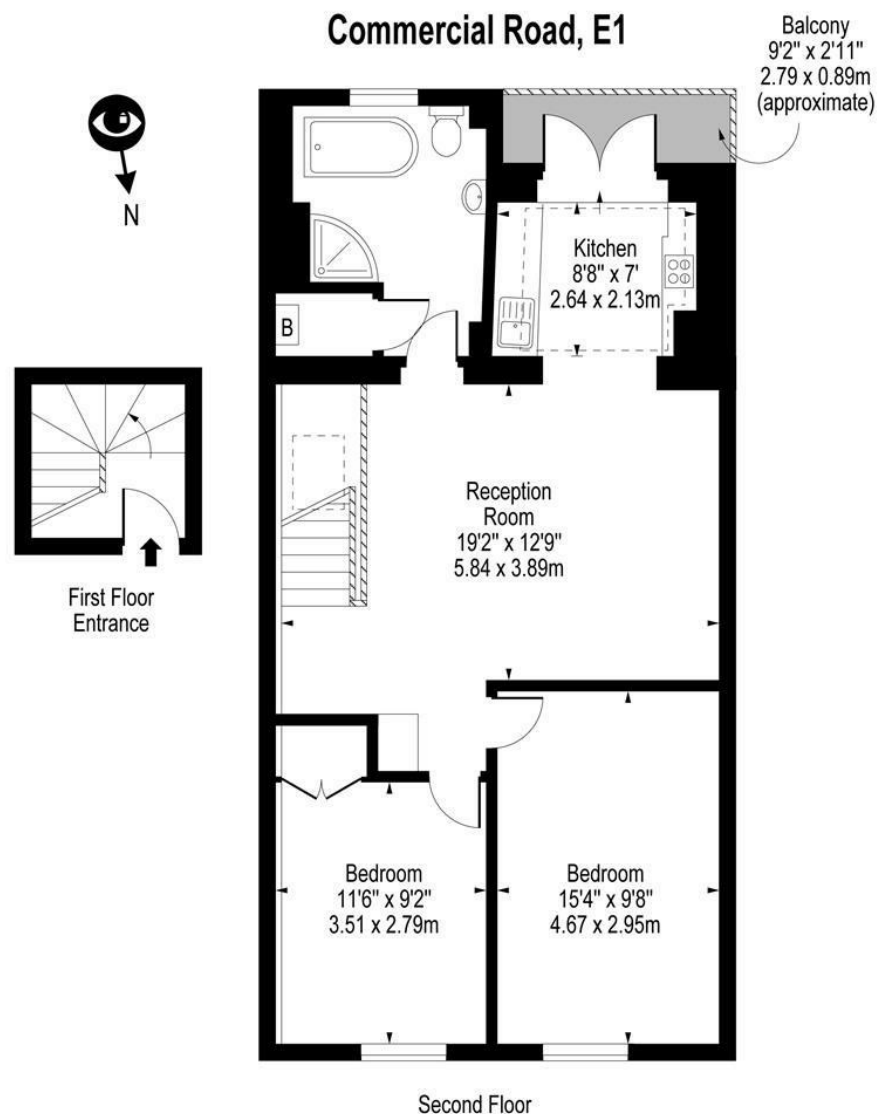
Available part furnished.

Features include a balcony, high ceilings and wood flooring.









Approx Gross Internal Area **792Sq Ft - 73.58 Sq M**

For Illustration Purposes Only - Not To Scale  
Floor Plan from www.BigPropertyMarketing.com

Energy Efficiency Rating		
	Current	Potential
Very energy efficient - lower running costs		
(92 plus) <b>A</b>		
(81-91) <b>B</b>		
(69-80) <b>C</b>		
(55-68) <b>D</b>		
(39-54) <b>E</b>		
(21-38) <b>F</b>		
(1-20) <b>G</b>		
Not energy efficient - higher running costs		
<b>England &amp; Wales</b>	EU Directive 2002/91/EC	

Environmental Impact (CO <sub>2</sub> ) Rating		
	Current	Potential
Very environmentally friendly - lower CO <sub>2</sub> emissions		
(92 plus) <b>A</b>		
(81-91) <b>B</b>		
(69-80) <b>C</b>		
(55-68) <b>D</b>		
(39-54) <b>E</b>		
(21-38) <b>F</b>		
(1-20) <b>G</b>		
Not environmentally friendly - higher CO <sub>2</sub> emissions		
<b>England &amp; Wales</b>	EU Directive 2002/91/EC	

## Viewing

Strictly by appointment with:  
Coopers of London , 22 Cleveland Street,  
Fitzrovia, London W1T 4JB  
info@coopersonlondon.co.uk

**0207 580 9658**

These particulars, whilst believed to be accurate are set out as a general outline only for guidance and do not constitute any part of an offer or contract. Intending purchasers should not rely on them as statements or representation of fact, but must satisfy themselves by inspection or otherwise as to their accuracy. No person in this firm's employment has the authority to make or give any representation or warranty in respect of the property.