



Whitechapel High Street, E1 7RA
£1,700 PCM

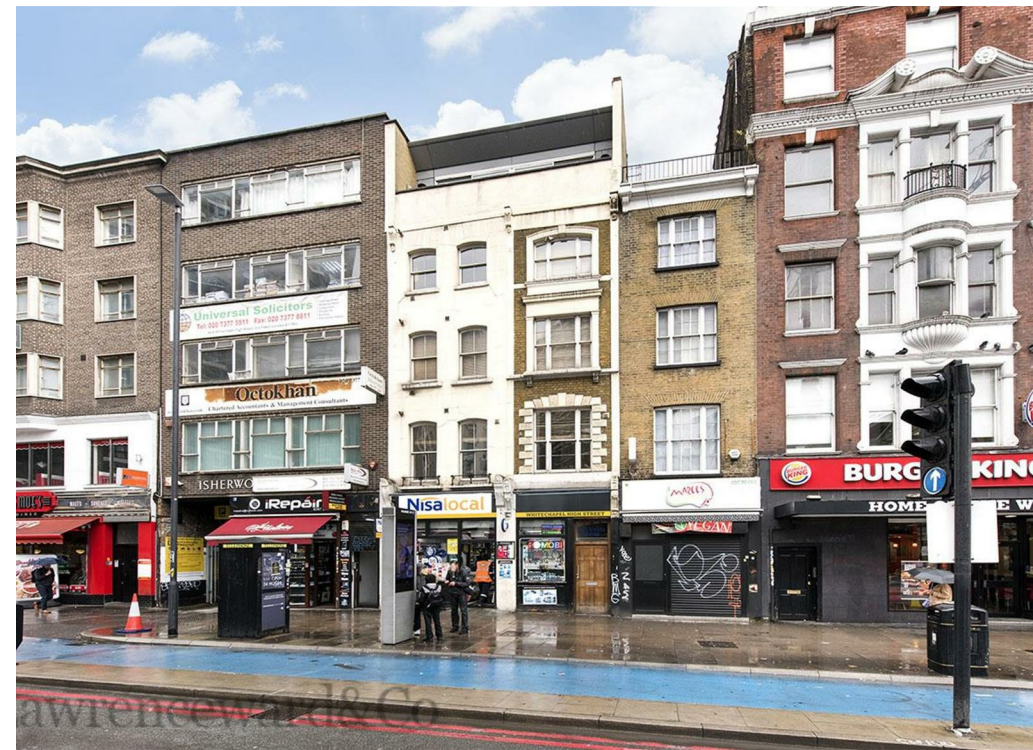
Lawrence Ward & Co

coopers
OF LONDON EST. 1986

Whitechapel High Street, E1

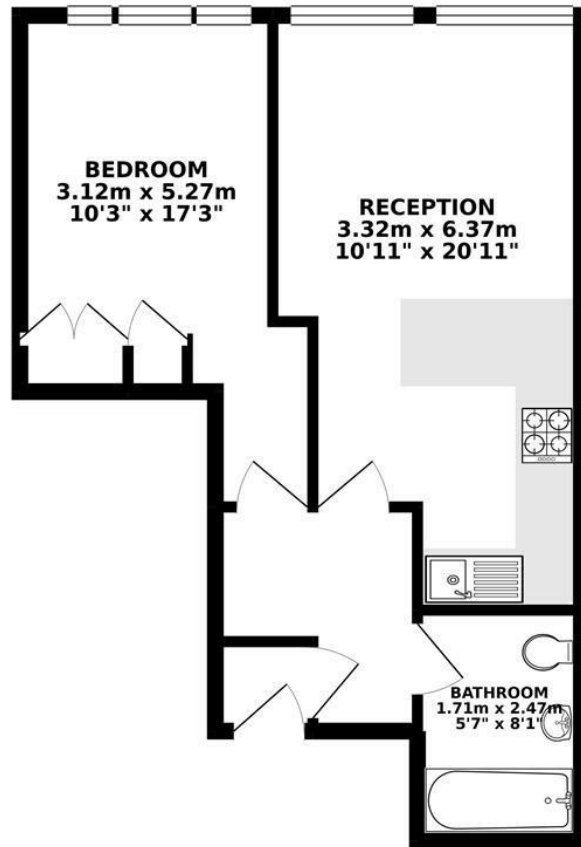
- Available April 16th 2025
- 1st floor
- Wood flooring
- High ceilings
- Close to Aldgate East Tube
- Council Band B

A one bed apartment set on the 1st floor of a period building located close to Aldgate & Aldgate East Stations. Features include a large terrace to the rear of the property, an open plan living room/kitchen and wood flooring.





1ST FLOOR 40.73 sq. m.
(438.41 sq. ft.)



TOTAL FLOOR AREA : 40.73 sq. m. (438.41 sq. ft.) approx.
Whilst every attempt has been made to ensure the accuracy of the floorplan contained here, measurements of doors, windows, rooms and any other items are approximate and no responsibility is taken for any error, omission or mis-statement. This plan is for illustrative purposes only and should be used as such by any prospective purchaser. The services, systems and appliances shown have not been tested and no guarantee as to their operability or efficiency can be given.
Made with Metropix 10/2019

Atlantis House E1

Energy Efficiency Rating		
	Current	Potential
Very energy efficient - lower running costs		
(92 plus) A		
(81-91) B		
(69-80) C		
(55-68) D		
(39-54) E		
(21-38) F		
(1-20) G		
Not energy efficient - higher running costs		
England & Wales	EU Directive 2002/91/EC	

Environmental Impact (CO ₂) Rating		
	Current	Potential
Very environmentally friendly - lower CO ₂ emissions		
(92 plus) A		
(81-91) B		
(69-80) C		
(55-68) D		
(39-54) E		
(21-38) F		
(1-20) G		
Not environmentally friendly - higher CO ₂ emissions		
England & Wales	EU Directive 2002/91/EC	

Viewing

Strictly by appointment with:
Coopers of London , 22 Cleveland Street,
Fitzrovia, London W1T 4JB
info@coopersonlondon.co.uk

0207 580 9658

These particulars, whilst believed to be accurate are set out as a general outline only for guidance and do not constitute any part of an offer or contract. Intending purchasers should not rely on them as statements or representation of fact, but must satisfy themselves by inspection or otherwise as to their accuracy. No person in this firms employment has the authority to make or give any representation or warranty in respect of the property.