

1 Biscayne Avenue

London • • E14 9AU

PCM: £1,700 PCM



coopers
est 1986

1 Biscayne Avenue

London • • E14 9AU

luxury studio apartment in the iconic Providence Tower development close to Canary Wharf.

Situated on the 6th floor of this prestigious 24hr portered building, the apartment features open plan studio room with high spec fold-down bed, luxury bathroom, engineered wooden floor, integrated kitchen and spectacular views of Canary Wharf.

Ideally situated for a riverside walk to Canary Wharf, the property is also close to Blackwall DLR for access to The City.

High spec gym, swimming pool, business centre and 43rd floor "Sky Lobby"

Available 11th September 2024 Furnished!

Available 11th September 2024

Luxury studio apartment

Sixth floor

24hr portered building

High Spec Gym

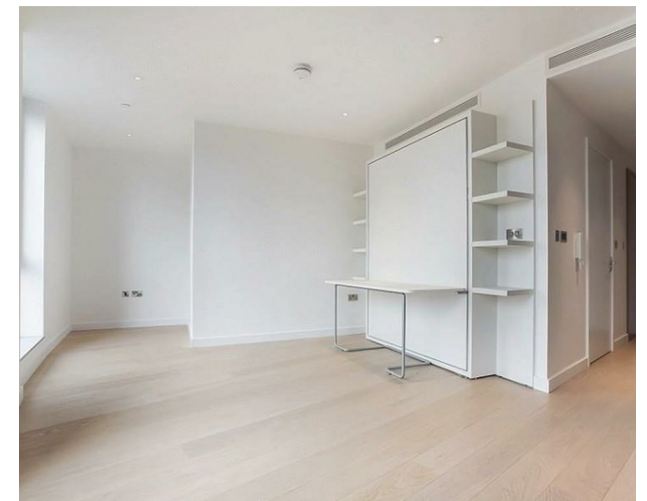
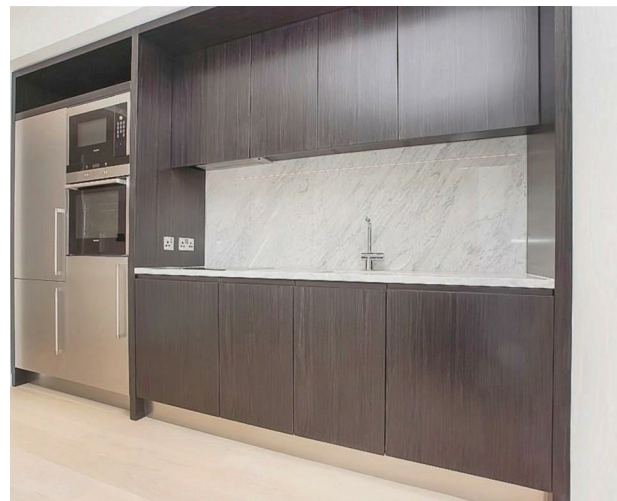
Swimming pool

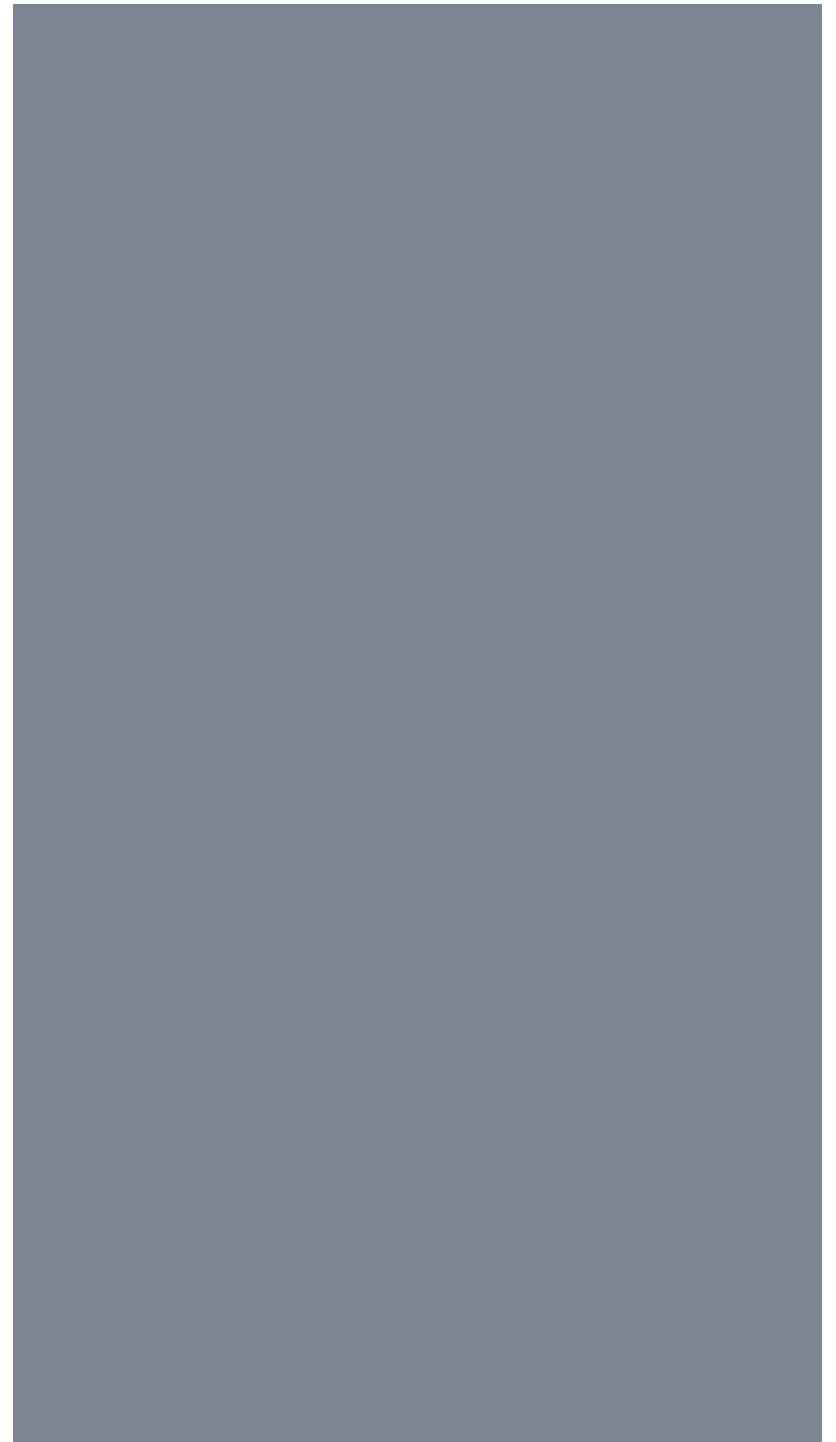
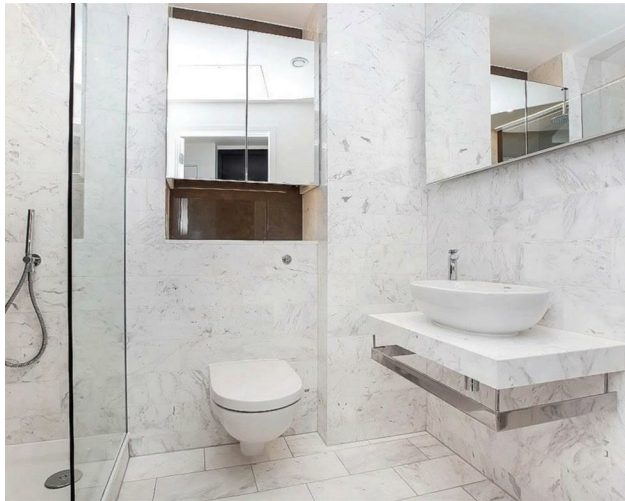
43rd floor "Sky Lobby"

Business centre

£392.30 Holding Deposit

These particulars are intended as a guide and must not be relied upon as statements of fact. Your attention is drawn to the Important Notice on the last page.







Schools:

luxury studio apartment in the iconic Providence Tower development close to Canary Wharf.



Train:



Car:

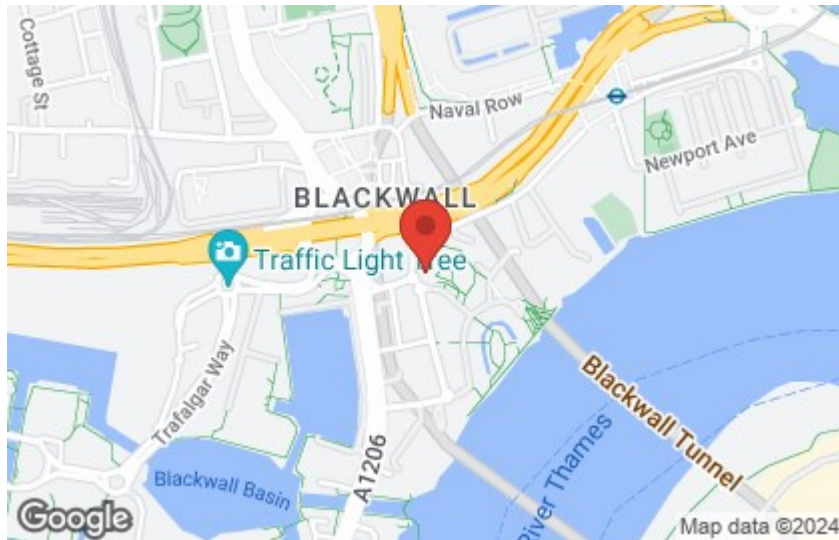
M4, A40, M25, M40



Council Tax Band:

D

(Distances are straight line measurements from centre of postcode)



0207 580 9658

22 Cleveland Street, Fitzrovia,
London, W1T 4JB

info@coopersonlondon.co.uk

CoopersResidential.co.uk

Energy Efficiency Rating	
Current	Target
The more efficient - lower running costs	
A	
B	
C	
D	
E	
F	
G	
Not energy efficient - higher running costs	
England & Wales	
EPC Directive 2002/91/EC	

Important Notice: These particulars, whilst believed to be accurate are set out as a general outline only for guidance and do not constitute any part of an offer or contract. Intending purchasers should not rely on them as statements or representation of fact, but must satisfy themselves by inspection or otherwise has the authority to make or give any representation or warranty in respect of the property.