



Brody House, Strype Street, E1 7LQ
£2,000 PCM

coopers
OF LONDON EST. 1986

Brody House, Strype Street, E1

- Concierge
- Secure Development
- Close to Liverpool Street
- Spilt-Level
- Great Location
- Newly refurbished
- £461.53 Holding Deposit

Stylish, modern studio 5 minutes walk from the amenities of Liverpool Street and Brick Lane.

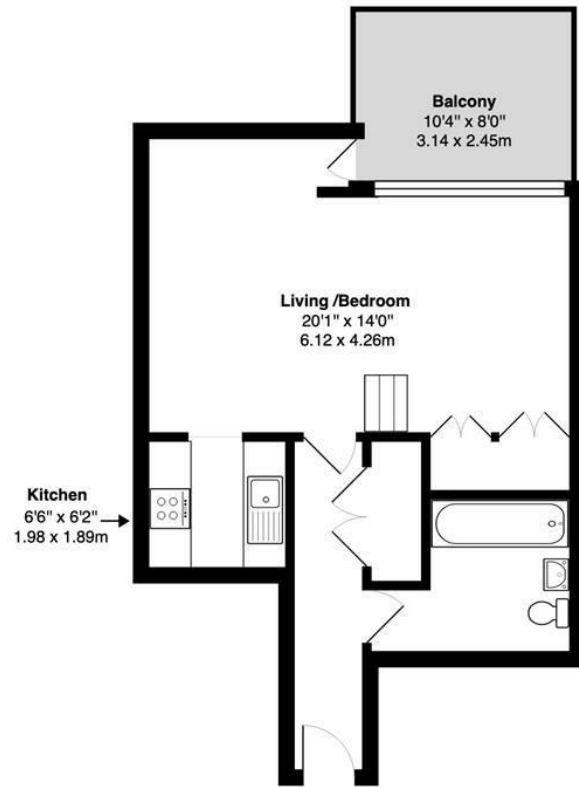
This split-level apartment is set within a secure, portered block and comprises: Raised sleeping area with fitted wardrobes, fully equipped kitchen, entrance hall, modern bathroom, private patio.

Brody House is situated on Strype Street, an easy walk from Liverpool Street station, The City, Shoreditch High Street and Brick Lane.

The flat is available furnished or unfurnished.







First Floor

Brody House Strype Street, E1 7LQ

Total Gross Area: 451 ft² ... 41.9 m² (excluding balcony)

All measurements are approximate and for identification guideline purposes only, not to scale.
Compliant with the RICS code of measuring practice

Energy Efficiency Rating		Current	Potential
Very energy efficient - lower running costs			
(92 plus) A			
(81-91) B			
(69-80) C			
(55-68) D			
(39-54) E			
(21-38) F			
(1-20) G			
Not energy efficient - higher running costs			
England & Wales		EU Directive 2002/91/EC	

Environmental Impact (CO ₂) Rating		Current	Potential
Very environmentally friendly - lower CO ₂ emissions			
(92 plus) A			
(81-91) B			
(69-80) C			
(55-68) D			
(39-54) E			
(21-38) F			
(1-20) G			
Not environmentally friendly - higher CO ₂ emissions			
England & Wales		EU Directive 2002/91/EC	

Viewing

Strictly by appointment with:
Coopers of London, 22 Cleveland Street,
Fitzrovia, London W1T 4JB
info@coopersoflondon.co.uk

0207 580 9658

These particulars, whilst believed to be accurate are set out as a general outline only for guidance and do not constitute any part of an offer or contract. Intending purchasers should not rely on them as statements or representation of fact, but must satisfy themselves by inspection or otherwise as to their accuracy. No person in this firm's employment has the authority to make or give any representation or warranty in respect of the property.