



1 Prescot Street, E1 8RJ
£2,000 PCM

coopers
OF LONDON EST. 1986

1 Prescot Street, E1

- One bed apartment
- Galleried dining & dressing areas
- Second floor (with lift)
- Wood flooring
- High ceilings
- £461.53 Holding Deposit
- Parking
- Concierge
- Good transport links
- Council tax Band E

A large one bedroom apartment arranged over 569 sq ft on the second floor of an Art Deco style building located on the edge of the City and close to the local bars and restaurants on Leman Street. Features include high ceilings, wood flooring and galleried study and dressing areas. Offered furnished & available from the 17th December.

A large one bedroom apartment arranged over 569 sq ft on the second floor of an Art Deco style building located on the edge of the City and close to the local bars and restaurants on Leman Street. Features include high ceilings, wood flooring and galleried study and dressing areas. Offered furnished & available from the 17th December.

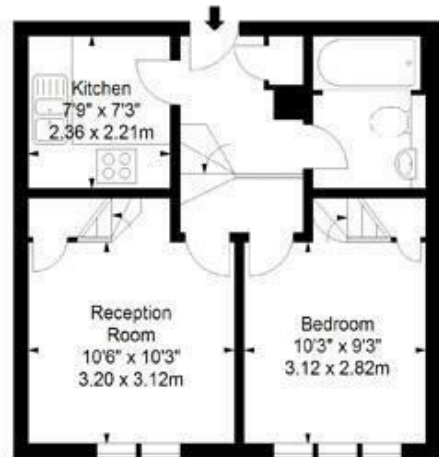




Prescot Street, E1



Mezzanine



Second Floor

Approx Gross Internal Area 569Sq Ft - 52.86Sq M

For Illustration Purposes Only - Not To Scale
Floor Plan from www.BigPropertyMarketing.com

Energy Efficiency Rating	Current	Potential
Very energy efficient - lower running costs		
(92 plus) A		
(81-91) B		
(69-80) C		
(55-68) D		
(39-54) E		
(21-38) F		
(1-20) G		
Not energy efficient - higher running costs		
England & Wales	EU Directive 2002/91/EC	

Environmental Impact (CO ₂) Rating	Current	Potential
Very environmentally friendly - lower CO ₂ emissions		
(92 plus) A		
(81-91) B		
(69-80) C		
(55-68) D		
(39-54) E		
(21-38) F		
(1-20) G		
Not environmentally friendly - higher CO ₂ emissions		
England & Wales	EU Directive 2002/91/EC	

Viewing

Strictly by appointment with:
Coopers of London, 22 Cleveland Street,
Fitzrovia, London W1T 4JB
info@coopersonlondon.co.uk

0207 580 9658

These particulars, whilst believed to be accurate are set out as a general outline only for guidance and do not constitute any part of an offer or contract. Intending purchasers should not rely on them as statements or representation of fact, but must satisfy themselves by inspection or otherwise as to their accuracy. No person in this firm's employment has the authority to make or give any representation or warranty in respect of the property.