

14 Barter Street

London • • WC1A 2AH
Per Week: £575 Per Week



coopers
est 1986

14 Barter Street

London • • WC1A 2AH

Coopers of London are delighted to offer this unusually spacious 572 SQ FT, fully furnished one bedroom apartment located in the Central London area of Holborn.

The property comprises of: entrance hallway area, spacious living room, separate fully fitted kitchen, large double bedroom and bathroom - with good natural light throughout.

The apartment is close to Holborn Station and benefits from nearby nearby Cross Rail & Underground links at Tottenham Court Road, Covent Garden and is walking distance from the The British Museum.

Available July 20th

Furnished

Spacious Apartment

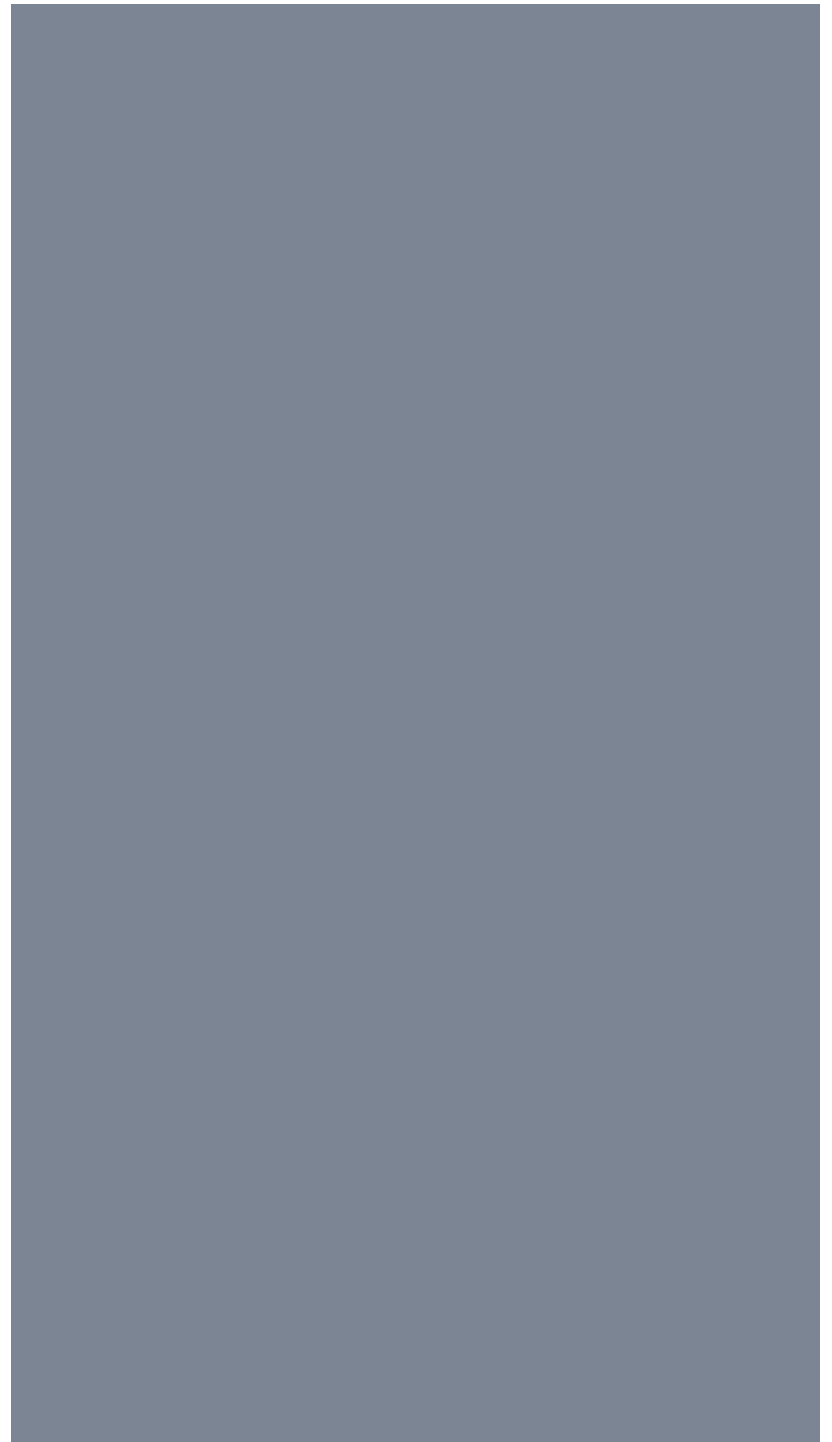
Excellent London Location

Good Transport Links

Video Tour

These particulars are intended as a guide and must not be relied upon as statements of fact. Your attention is drawn to the Important Notice on the last page.







Schools:

Coopers of London are delighted to offer this spacious fully furnished 1 bedroom apartment located in the Central London area of Holborn.



Train:



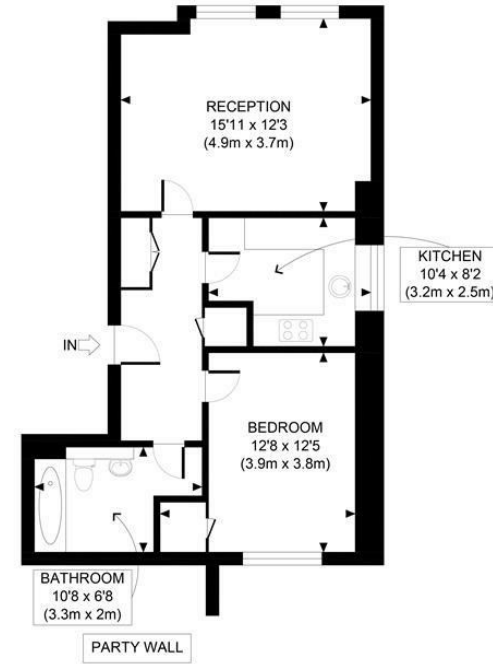
Car:

M4, A40, M25, M40



Council Tax Band:

(Distances are straight line measurements from centre of postcode)



GROSS INTERNAL FLOOR AREA 572 SQ FT

APPROX. GROSS INTERNAL FLOOR AREA 572 SQ FT / 53 SQM

Disclaimer: Floor plan measurements are approximate and are for illustrative purposes only. While we do not doubt the floor plan accuracy and completeness, you or your advisors should conduct a careful, independent investigation of the property in respect of monetary valuation

Copyright photoplan360



0207 580 9658
22 Cleveland Street, Fitzrovia, London, W1T 4JB
info@coopersonlondon.co.uk

CoopersResidential.co.uk

Energy Efficiency Rating table with columns for Current, Potential, and Tenure, and a color-coded scale from A to G.

Important Notice: These particulars, whilst believed to be accurate are set out as a general outline only for guidance and do not constitute any part of an offer or contract.